

TRAVELMARVEL 

Travel More

# GREAT RAIL JOURNEYS

Global Escorted Rail Holidays



# 2025

Premium journeys at exceptional value

**SAVE** UP TO  
**\$5,600** PER COUPLE\*

Earlybird Offers

\*See inside for details



Soar through vast valleys on the Brienz Rothorn Railway, Switzerland



# Why Choose TRAVELMARVEL

## Trusted Experience

Backed by the award-winning APT Travel Group, we're proud to be owned and run by the McGeary family, who have been travel industry trailblazers for almost a century.

## Greater Value

Travelmarvel delivers premium journeys at exceptional value all over the world. Experience incredible destinations, iconic sights, hand-picked accommodation, and authentic local cuisine – all without paying for the extras you don't want or need.

## Expanded Choice

We know that one size doesn't fit all, so our itineraries are designed to provide the perfect balance between exploring all the iconic sights while still having plenty of leisure time to do your own thing.

## Amiable Journeys

Travelling with like-minded people means you'll experience a more casual and relaxed atmosphere where fellow travellers quickly become newfound friends.

## Flexible Bookings

Our flexible booking policies allow you to cancel and move your holiday to another time.<sup>^</sup> Plus, you can secure your place for up to seven days without paying a deposit.

## Safe Journeys

Your health – and that of your family, as well as our staff and crew – is Travelmarvel's highest priority. You can rely on our industry-leading health protocols to help ensure everyone's health and wellbeing.

## All Taken Care Of

Travelmarvel makes holidaying easy. Our travel experts can look after all aspects of your journey. There's 24/7 emergency support and we'll keep you updated on any travel requirements.

Consider protecting your travel plans with a travel insurance policy that's right for you. Ask our travel experts to quote on a nib travel insurance policy.

<sup>^</sup>Conditions apply. Visit [www.travelmarvel.com.au/confidence](http://www.travelmarvel.com.au/confidence) for full terms and conditions.



From cancelled trips, to broken legs,  
stolen luggage – nib is here to protect  
your trip, health and wellbeing.



Consider PDS & TMD.  
Issuer: Pacific International Insurance.

Australian Pacific Tours Pty Ltd (APT), ABN 44 004 684 619 arranges this travel insurance as a distributor of MCA Insurance Brokers Pty Ltd (MCA), ABN 68 005 522 181, AFSL 240942, who has been authorised to distribute nib travel insurance by nib Travel Services (Australia) Pty Ltd (nib) ABN 81 115 932 173, AFSL 308461. APT is not authorised to give you any advice about travel insurance. APT may receive a commission as a percentage of the policy premium. Read the PDS, FSG and TMD available from us before you buy. If you are unhappy with the services provided by the insurer or nib, contact nib on 1300 025 121. This insurance is underwritten by Pacific International Insurance Pty Ltd, ABN 83 169 311 193.

# Contents

2	Why Choose Travelmarvel	
6	Explore More of the World by Rail	
8	We Take Care of Everything	
10	Discover the World by Rail	
12	Included Sightseeing	
14	Traveller Club	
15	Holiday Maps	
18	Earlybird Offers	
<b>20</b>	<b>DISCOVER EUROPE</b>	
22	Europe's Iconic Trains & Railways	
24	Grand Alpine Explorer	14 Days
26	Classic Glacier Express	11 Days
28	Glacier Express & St. Moritz	9 Days
30	Mountain Tops of Switzerland	8 Days
32	Edinburgh, the Highlands & Islands	9 Days
34	Enchanting Emerald Isle	9 Days
36	Ultimate Norway & Sweden	17 Days
38	Top to Toe of Italy	15 Days
40	Spain & Morocco Adventure	13 Days
42	Edinburgh, the Highlands & Islands with European Gems	23 Days
<b>44</b>	<b>DISCOVER ASIA</b>	
46	Asia's Iconic Trains & Railways	
48	Discovering Japan	12 Days
50	Grand Tour of Japan	14 Days
52	India's Golden Triangle, Tigers & Shimla	13 Days
54	Highlights of the Golden Triangle & Mumbai	10 Days
56	Discover Southern India & Kerala	15 Days
58	Discover China	14 Days
<b>60</b>	<b>DISCOVER THE USA</b>	
62	USA's Iconic Trains & Railways	
64	Grand Tour of America	17 Days
66	Tracks of the Deep South	13 Days
<b>68</b>	<b>GENERAL INFORMATION</b>	
68	OneTomorrow	
69	Proudly Australian Owned	
70	General Information & Conditions	

To explore more of the world by Great Rail Journeys visit  
[travelmarvel.com.au/rail-journeys](https://travelmarvel.com.au/rail-journeys)

Toy Train to Shimla, India



# DISCOVER EUROPE

Page 20





## DISCOVER ASIA

Page 44



Beijing

Suzhou

Shanghai





# EXPLORE MORE OF THE World by Rail

## DISCOVER EUROPE

### Ireland & Scotland

Journey through the Emerald Isle and Scottish countryside on stunning railways aboard the Jacobite Steam Train and more.

### Spain & Morocco

Cross sun-drenched Spanish landscapes, passing glorious countryside and visit exotic Moroccan destinations.

### Norway & Sweden

See majestic fjords and travel on some of Scandinavia's most scenic rail journeys including the Flåm and Bergen Railways.

### Switzerland

Marvel at some of Switzerland's most beautiful lakes and mountains while aboard the famous Glacier Express train.

### Italy

Travel to romantic cities including Rome and Florence, and ride the Circumetnea railway around Mount Etna.

## DISCOVER ASIA

### India

Journey aboard the Gatimaan Express from Delhi to Agra, and the heritage Toy Train from Kalka to Shimla.

### Japan

Japan's famous network of bullet trains whisks you between incredible cities including Tokyo and Kyoto.

### China

From witnessing the awe-inspiring Great Wall of China, to travelling aboard high speed bullet trains, be immersed in the beauty of China.

## DISCOVER THE USA

### USA

Ride the historic Grand Canyon Railway and Colorado's Durango and Silverton Railroad.



## DISCOVER THE USA

Page 60





# We Take Care OF EVERYTHING

LOOKING AFTER YOU ISN'T JUST OUR JOB – IT'S OUR PASSION

Great service is about going above and beyond, and that's why our staff are dedicated to ensuring your holiday is the very best it can be.

## EXPERT TOUR ESCORTS

No matter where you travel, we want you to feel as though you're in the best hands. To make sure this is the case, your Great Rail Journeys Tour Escort is with you throughout your rail journey to ensure that every aspect of your holiday is an enjoyable experience. They're on hand to answer any questions and ensure your trip is stress-free. Our Tour Escorts are selected for their engaging personalities, insight, experience and composure.

## KNOWLEDGEABLE LOCAL GUIDES

There's nothing like a local's knowledge to help you gain an insider's perspective into each of our hand-picked destinations. Our friendly English-speaking guides have an innate passion for their region, its sights, its highlights and its customs. They make sure you not only visit the must-see landmarks, but also visit exclusive spots not mentioned in guide books so you can delve into local life wherever you go. They can also provide hints for what to do during your leisure time, so that you can make the most out of each destination.

## WORLDWIDE OFFICES

Dedicated Travelmarvel and Great Rail Journeys staff are based in our offices across the world. If the unexpected occurs while you're travelling, our team of experts is available to ensure you are well taken care of.





Enjoy views of the sunny Swiss Alps, Switzerland



“We can’t sing the praises of Travelmarvel high enough”

Trisha and Chris, NSW

### FREE TIME YOUR WAY

You’ll enjoy ample leisure time to discover the remarkable locations you visit at your own pace, with your Tour Escort always on hand to point you in the right direction. Unearth hidden gems as you roam around historic laneways, or relish a change of pace and relax at an authentic cafe with a drink in hand, soaking up the local life and culture surrounding you.

### COMPREHENSIVE INCLUSIONS

We make sure the majority of your holiday costs are covered before you leave home. We clearly specify everything that is included in the itineraries to make budgeting easy.

### MOBILITY RATING

Each itinerary features a mobility rating specifying the fitness level needed for each journey, to help you select a holiday best suited to you. Look for the rating in the Trip Notes section on each itinerary page.

#### Level 1 – Leisurely Tourist

These journeys are a leisurely travel experience. Enjoy the ambience of new places at a relaxed pace. Expect stairs, getting on and off transport with your suitcase, and moderate walks of 15-30 minutes.

#### Level 2 – Everyday Traveller

These journeys feature well-rounded travel experiences. Expect comfortable walking for 30-45 minutes on various terrains, such as cobblestoned streets, straightforward paths, and routes with rail changes combined with downtime to unwind and recharge.

#### Level 3 – Comfortable Explorer

These journeys are moderately active. Expect to ascend hills, walk on uneven surfaces, take various modes of transportation, and stand for longer periods. There will be full days of exploration, but also time to rest and recharge your batteries.

#### Level 4 – Active Adventurer

These journeys are designed for those who stay active and like to explore. Expect longer walking tours of 90 minutes or more, standing for extended periods of time, and navigating towns and the countryside. Itineraries may include early starts, late-night experiences, and full days of exploration.



# DISCOVER *The world by Rail*

ALL ABOARD FOR A JOURNEY THAT CELEBRATES THE ROMANCE OF RAIL

Trains have long played a key role in connecting global destinations. TravelMarvel has sought out holidays that celebrate the wonder of rail, delivering each journey with expertise and transporting you between cities and countries with ease and in the utmost comfort.

#### THE PERFECT PARTNERSHIP

Well established as the experts in land touring and premium river cruising, TravelMarvel is delighted to continue its ongoing partnership with award-winning Great Rail Journeys to show you the wonders that can be experienced through rail. By pairing with a company that has nearly 50 years of experience in rail-based holidays, together, we deliver only the very best experiences.

#### WHY TAKE THE TRAIN?

Return to a time when travelling was an art in itself. Faster and more comfortable than ever, there's no denying that today, rail is one of the easiest ways to get around when travelling. Ever-changing vistas glide past your window to reveal entirely new and exciting scenery. The pleasure of experiencing these iconic trains and railways is sure to be as memorable as the cities you visit.



# GREAT RAIL JOURNEYS

SILVER TRAVEL AWARDS 2022

WINNER



BEST TRAVEL COMPANY FOR RAIL HOLIDAYS



Glide through lush landscapes on the Durango and Silverton Railway, USA



Embark on a spectacular train journey, Sri Lanka



Soar past Mount Fuji on a bullet train, Japan



Exquisite service on the Glacier Express, Switzerland

## CAPTIVATING SCENERY

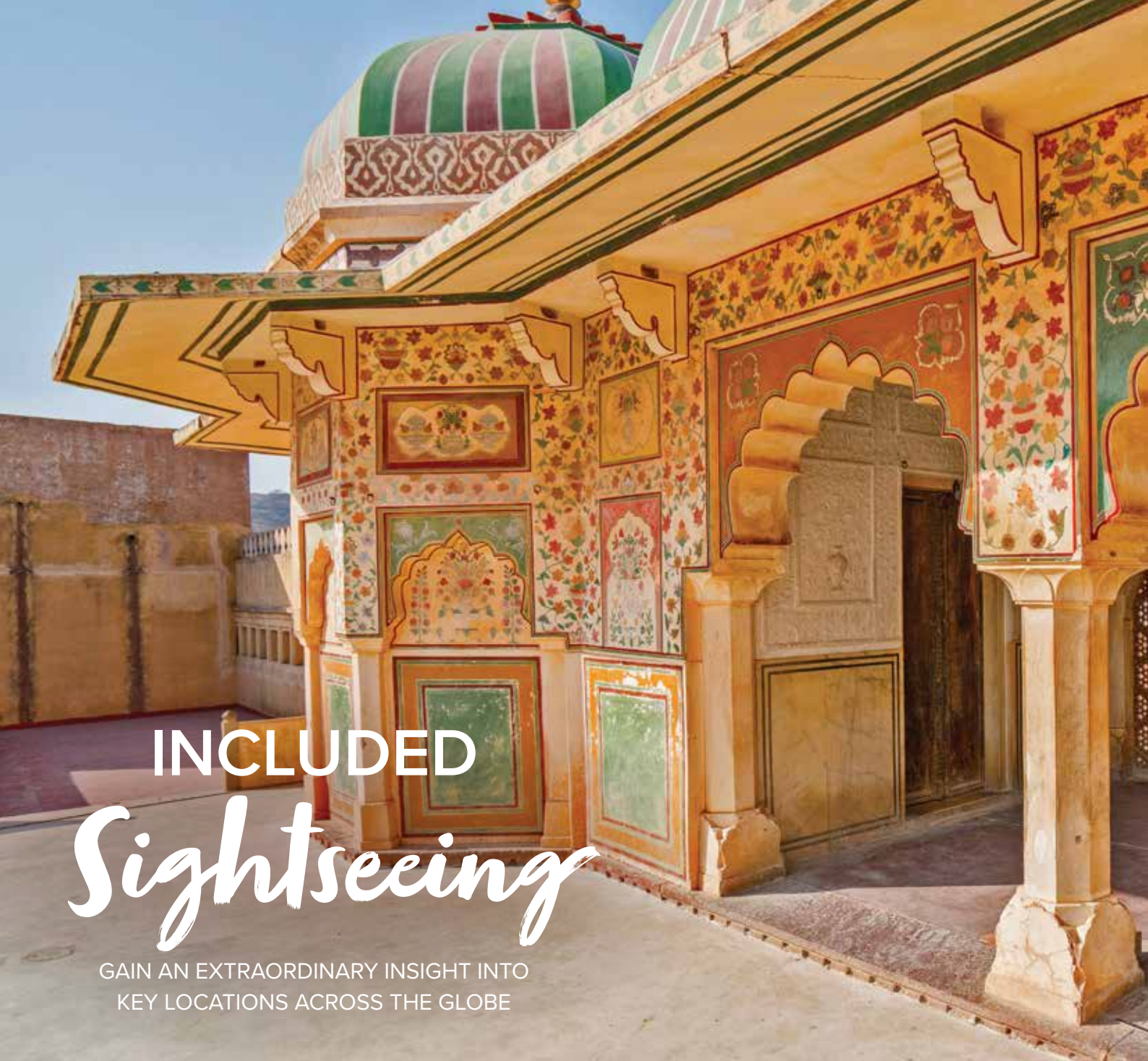
The vistas will enthrall you as you travel through diverse landscapes and isolated villages, many inaccessible by any other form of transport. Whether you're travelling through the mountainous ravines of the European Alps, across the USA from the east to the west coast, arriving in the neon-lit cities of Japan, glimpsing the Himalayas and the vast panoramas of India, or traversing the vibrant landscapes of China, your train provides the ideal vantage point.

## TRAVEL IN COMFORT

On board our variety of train journeys, sit back and relax with ample leg room, or walk about the carriage, enjoying a chat with fellow travellers. Rather than being confined solely to your seat, you'll enjoy time gazing out windows from different places on board. Throughout your journey, savour delicious meals, snacks and drinks at your seat, in the restaurant, or in the bar car.

## PREMIUM ACCOMMODATION

For many nights on your holiday, a premium hotel awaits, chosen for its convenient location or superior amenities. Each hotel is selected for the high standards of service it provides, and serves as a base from which you'll be able to venture out and explore at your leisure. In the heart of a city or town, the hotels you stay in are an ideal accompaniment to your rail adventure.



# INCLUDED *Sightseeing*

GAIN AN EXTRAORDINARY INSIGHT INTO  
KEY LOCATIONS ACROSS THE GLOBE

Delve deep into the essence of truly spectacular regions with so much to offer. Enjoy unique sightseeing activities and experience the lesser-known wonders of these incredible destinations to create a memorable journey with Travelmarvel.

## **SIGHTSEEING HIGHLIGHTS**

Every Travelmarvel holiday provides comprehensive included sightseeing to ensure you see all the highlights. Whether embarking on spellbinding rail journeys or taking part in captivating cultural experiences, enrich all your senses with these spectacular moments, expertly arranged throughout your itinerary. Travel between bustling central cities on efficient railways and pass lush countryside. See cultural landmarks on arrival, rich in heritage and history accompanied by an expert guide. Delve deeper into tradition and the local way of life with Travelmarvel.

## **INSIDER EXPERIENCES** ☆

Travelmarvel's Insider Experiences are a collection of holiday highlights that provide a unique window into the history and culture of the region you're exploring – whether through an iconic rail journey, an outstanding hotel, a memorable meal, or a special sightseeing experience. Insider Experiences turn your holiday into an exciting Travelmarvel adventure, something to treasure for years to come. Throughout itineraries, look out for the bold, coloured text and star logo. On your Great Rail Journey, Insider Experiences include travelling through Germany on the Zugspitze Railway, the Durango and Silverton Railroad in the USA, and aboard India's World Heritage-listed Toy Train to Shimla.



Observe stunning architecture in Jaipur, India



Visit the Mount Fuji Heritage Centre, Japan



Witness the Grand Canyon's South Rim, USA



Learn about Sámi culture, Norway

## EXPERIENCE EUROPE

### Mozart dinner in Austria ☆

Savour a delectable dinner while listening to the soothing tones of Mozart's masterpieces in Salzburg.

### Learn about Sámi life in Norway ☆

Gain a deeper insight into the unique culture of the Sámi at Båtsuoj Sámi Centre in Norway.

### Scottish dinner and whisky tasting ☆

Indulge in the traditional flavours of Scotland with a dinner and whisky tasting in Fort William.

## EXPERIENCE ASIA

### Jaipur's Pink City in India ☆

Take an in-depth exploration of the Pink City via tuk tuk and marvel at its extraordinary architecture.

### High-speed train to Xi'an in China ☆

Travel in comfort aboard First-Class modern carriages as you absorb countryside views of Eastern China.

### Mount Fuji Heritage Centre in Japan ☆

Learn about the cultural and natural significance of the UNESCO World Heritage-listed site, Mount Fuji.

## EXPERIENCE USA

### Board the Grand Canyon Railway ☆

See the awe-inspiring Grand Canyon as you travel in vintage carriages on a historic locomotive.

### Amtrak's City of New Orleans service ☆

Journey through Mississippi to Louisiana on the iconic railroad route through the birthplace of Blues music.

### Venture to Alcatraz ☆

Deep dive into San Francisco's past on a visit to the island of Alcatraz, famous for its history as a federal penitentiary.



# Traveller Club

A CLUB THAT TAKES YOU FURTHER

Welcome to Traveller Club – our member-only loyalty program. Traveller Club is free for anyone to join and members have access to exclusive benefits, whether or not you have toured with us previously. Every time you travel with us, you rise through the membership tiers, so not only do you enjoy unforgettable travel experiences throughout the world, you unlock exciting new benefits after every trip.

**TRAVELMARVEL** 

Travel More

Join for free, visit  
[travelmarvel.com.au/club](https://travelmarvel.com.au/club)

# Holiday MAPS

Soak in views of the Great Wall of China

**14 Day Grand Alpine Explorer (RJTAG14P)**

Germany: Munich (2), Salzburg (3)  
Switzerland: Interlaken (3), Zurich, Brig, St. Moritz, Tirano  
Austria: Innsbruck (2)  
Italy: Tirano  
Railways: Jungfrau Railway, Glacier Express, Bernina Express

pages 24-25

**11 Day Classic Glacier Express (RJTGEJ11)**

England: London (2)  
France: Paris, Strasbourg (1)  
Switzerland: Spiez, Brig (4), Zermatt, St. Moritz  
Italy: Poschiavo  
Railways: Glacier Express, Bernina Express

pages 26-27

**9 Day Glacier Express & St Moritz (RJTGZJ9)**

England: London (2)  
Belgium: Brussels  
Germany: Cologne (1)  
France: Paris, Strasbourg (1)  
Switzerland: Basel, St. Moritz (3), Zermatt (3)  
Italy: Visp, Gornergrat, Tirano  
Railways: Glacier Express, Bernina Express, Gornergrat Mountain Railway

pages 28-29

**8 Day Mountain Tops of Switzerland (SGRMTS8P)**

Switzerland: Basel (1), Zurich, Lucerne (2), Interlaken, Spiez, Rothorn, Geissbach, Brig, St. Moritz (2)  
Italy: Tirano  
Railways: Brienz-Rothorn Mountain Railway, Glacier Express, Bernina Express

pages 30-31

**9 Day Edinburgh, the Highlands & Islands (RJTSHS9P)**

Scotland: Kyle Line, Inverness (3), Loch Ness, Fort William (3), Ballachulish, Oban, Glasgow, Edinburgh (2)  
Isle of Mull, Kyle of Lochalsh, Mallaig  
Railways: Kyle Line, Jacobite Steam Train, West Highland Line

pages 32-33

**9 Day Enchanting Emerald Isle (RJTI9S9P)**

Ireland: Connemara, Cliffs of Moher, Galway (2), Ring of Kerry, Killarney (2), Blarney, Cork (1), Dublin (3)

pages 34-35



**17 Day Ultimate Norway & Sweden (RJTACJ17P)**

pages 36-37

**15 Day Top to Toe of Italy (RJTTG15P)**

pages 38-39

**13 Day Spain & Morocco Adventure (RJTMAG13P)**

pages 40-41

**23 Day Edinburgh, the Highlands & Islands with European Gems (EUTCSH23P)**

pages 42-43

**12 Day Discovering Japan (RJTAG12)**

pages 48-49

**14 Day Grand Tour of Japan (RJTTG14)**

pages 50-51





**13 Day India's Golden Triangle, Tigers & Shimla (RJTLTC13)**

pages 52-53

**10 Day Highlights of the Golden Triangle & Mumbai (RJTGMJ10)**

pages 54-55

**15 Day Discover Southern India & Kerala (RJTGCJ15)**

page 56-57

**14 Day Discover China (RJTCYG14)**

pages 58-59

**17 Day Grand Tour of America (RJTSUG17)**

pages 64-65

**13 Day Tracks of the Deep South (RJTD SG13)**

pages 66-67

# Earlybird OFFERS

HURRY – STRICTLY LIMITED OFFERS!

## OFFER 1

**SAVE UP TO \$4,600 PER COUPLE\***

On selected Rail & Cruise combinations.

## OFFER 2

**SAVE \$1,000 PER COUPLE\***

THE OFFERS ABOVE CAN BE COMBINED WITH THE FOLLOWING TWO OFFERS:

### EARLY PAYMENT DISCOUNT OF

UP  
TO **\$1,000\*** PER  
COUPLE

Book a Travelmarvel Great Rail Journeys holiday and pay in full 10 months prior to departure and you will receive additional savings.

### TRAVEL WITH FRIENDS & SAVE

UP  
TO **\$600\*** PER  
COUPLE

When six or more people book together on a Great Rail Journeys holiday, Travelmarvel offers additional savings.

The Bernina Express travelling over Landwasser Viaduct, Switzerland

Conditions apply. Information and offers are correct as at 16 August 2024, but may fluctuate due to changes in availability, surcharges, fees, taxes or exchange rates. All pricing and amounts are in Australian dollars. A limited number of offers are available until sold out, are subject to availability and are only available on new bookings. Offers apply to selected holidays and categories. Offers cannot be redeemed for cash and may be withdrawn at any time. Earlybird Offers 1 and 2 cannot be combined unless otherwise stated. Earlybird Prices shown in red throughout this brochure are inclusive of Early Payment Discount (if applicable), as well as any other applicable dollar savings, until they have expired or sold out. OFFER 1 – SAVE UP TO \$4,600 PER COUPLE: Applicable on selected Rail and Cruise Combinations. See the adjoining grid above for the applicable dollar saving. A non-refundable deposit of \$1,000 per person is due within seven days of booking. Final payment is due 100 days prior to departure.

**BOOK TODAY\***

Limited offers available until sold out

PAGE NO.	TOUR	TOUR CODE	EARLYBIRD OFFER 1 SAVE UP TO \$4,600 PER COUPLE	OR	EARLYBIRD OFFER 2 SAVE \$1,000 PER COUPLE	EARLY PAYMENT DISCOUNT PER COUPLE	TRAVEL WITH FRIENDS & SAVE PER COUPLE
<b>DISCOVER EUROPE</b>							
24	Grand Alpine Explorer	RJTAPG14P			\$1,000	\$400	\$300
26	Classic Glacier Express	RJTGEJ11			\$1,000	\$400	\$300
28	Glacier Express & St. Moritz	RJTGZJ9			\$1,000	\$400	\$300
30	Mountain Tops of Switzerland	SGRMTS8P			\$1,000	\$400	\$300
32	Edinburgh, the Highlands & Islands	RJTSHS9P			\$1,000	\$400	\$300
34	Enchanting Emerald Isle	RJTIRS9P			\$1,000	\$400	\$300
36	Ultimate Norway & Sweden	RJTACJ17P			\$1,000	\$400	\$300
38	Top to Toe of Italy	RJTITG15P			\$1,000	\$400	\$300
40	Spain & Morocco Adventure	RJTMAG13P			\$1,000	\$400	\$300
42	Edinburgh, the Highlands & Islands with European Gems	EUTCSSHS23P	\$4,600			\$1,000	\$600
<b>DISCOVER ASIA</b>							
48	Discovering Japan	RJTJAG12			\$1,000	\$400	\$300
50	Grand Tour of Japan	RJTJTG14			\$1,000	\$400	\$300
52	India's Golden Triangle, Tigers & Shimla	RJTLTC13			\$1,000	\$400	\$300
54	Highlights of the Golden Triangle & Mumbai	RJTGJM10			\$1,000	\$400	\$300
56	Discover Southern India & Kerala	RJTGCJ15			\$1,000	\$400	\$300
58	Discover China	RJTJCY14			\$1,000	\$400	\$300
<b>DISCOVER THE USA</b>							
64	Grand Tour of America	RJTSUG17			\$1,000	\$400	\$300
66	Tracks of the Deep South	RJTDSG13			\$1,000	\$400	\$300

**OFFER 2 — SAVE \$1,000 PER COUPLE:** Applicable on selected Rail Only Journeys. See the adjoining grid above for the applicable dollar saving. A non-refundable deposit of \$1,000 per person is due within seven days of booking. Final payment is due 100 days prior to departure. **EARLY PAYMENT DISCOUNT OF UP TO \$1,000 PER COUPLE:** Final balance must be paid in full 10 months prior to travel. Discount can be combined with one other offer (OFFER 1 OR 2) as well as the Travel With Friends discount where applicable. **TRAVEL WITH FRIENDS:** Save up to \$600 per couple available when six or more friends are travelling together on the same cruise or tour, and book that cruise or tour at the same time. Discount can be combined with one other offer (OFFER 1 OR 2) as well as the Early Payment Discount where applicable. Cannot be combined with any other group discount.



Traverse stunning landscapes aboard the Bernina Express, Switzerland



# Discover Europe

Climb aboard and experience Europe's finest rail adventures

There's something special about discovering Europe by rail. The continent's majestic scenery and landscapes are truly on show aboard some of Europe's most iconic trains.

## STUNNING SCANDINAVIA


Experience the serene perfection of the northern fjords on the Ultimate Norway and Sweden tour. Pass by mountains and gorgeous lakes. Travel into the untamed wilderness of Lapland, home of the Indigenous Sámi. Board the Flåm Railway for a breathtaking journey to Myrdal, then cruise along Norway's longest and deepest fjords.

## HIGHLANDS & ISLANDS

In the Scottish Highlands, be left in awe by an amphitheatre of steely lochs, coastal meadows and enchanting glens as you travel along the West Highland Line. Skirt by the beautiful Loch Lomond and wind through the marshy moorland and rocky outcrops of Rannoch Moor. You'll also step aboard the famed Jacobite Steam Train, known as the Hogwarts Express in the *Harry Potter* films. This legendary train passes the impressive Ben Nevis and climbs into the mountains around Glenfinnan on its approach to Mallaig, the final leg of the West Highland Line.

## ALPINE WONDERS

Dominated by the iconic Matterhorn, the Alps are Europe's largest mountain range. The region's panoramic railways, which include Switzerland's famous Glacier Express as well as the Jungfrau and Bernina Express, are incredible feats of engineering. During your journey from St. Moritz to Brig aboard the Glacier Express, you'll take in every inch of mountain scenery through the train's impressive panoramic windows. Frequent bridge crossings offer a succession of awe-inspiring views of the valleys below. Along the way, you'll reach dizzying heights as you traverse the dramatic Landwasser Viaduct. The grand scenery of the Rhine Valley continues as you enjoy a two-course lunch in your seat. The world's slowest express train then scales the Oberalp Pass, before making its gradual descent, bringing you alongside small alpine villages on your way to Brig.

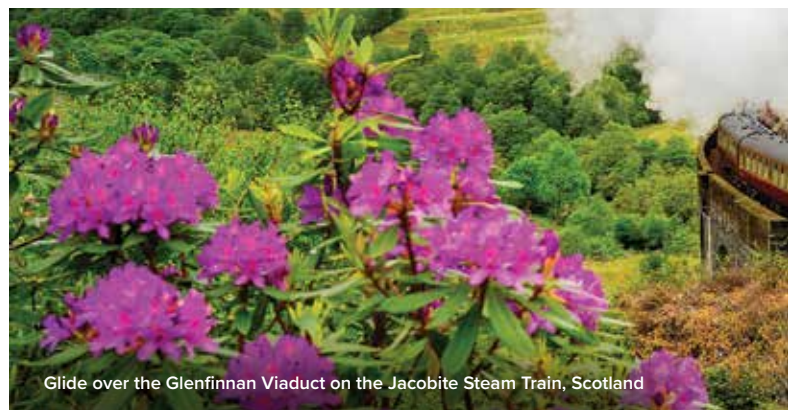


# EUROPE'S ICONIC Trains & Railways

WE'RE DELIGHTED TO TAKE YOU ON THESE REMARKABLE RAIL JOURNEYS



Enjoy a ride on the Flåm Railway, Norway



Glide over the Glenfinnan Viaduct on the Jacobite Steam Train, Scotland

Zooming from city to city on fantastic heritage railways and modern high-speed trains, your experience will be so much more than your average train ride.

## HIGH-SPEED RAIL NETWORK

This sprawling continent is well connected by an impressively efficient high-speed rail network. The Eurostar glides from London, underneath the English Channel, directly to Paris, while Italy's high-speed trains and Germany's ICE (InterCity Express) have both revolutionised rail travel.

## FLÅM RAILWAY, NORWAY

Riding some of the world's steepest tracks, the Flåm Railway is one of the boldest examples of engineering. Swirl in and out of mountain tunnels as you are whisked through the Flåm Valley alongside the largest fjord in Europe, the Sognefjord.

## RAUMA RAILWAY, NORWAY

One of Norway's most beautiful and wildest train journeys, the Rauma railway stretches for 114 kilometres along the Rauma River. Travel through tunnels, over bridges and along steep cliff faces.

## GLACIER EXPRESS, SWITZERLAND

Known as the world's slowest express train, this bright red train meanders through the Swiss Alps, between St. Moritz and Zermatt, navigating 91 tunnels, 291 bridges and the 2,000-metre-high Oberalp Pass. With some of the world's most incredible landscapes and mountains outside your window, it's a bonus that the journey takes longer than expected.



See Jungfrau summit, Switzerland



Travel on the Zugspitze Railway, Germany

### JUNGFRAU RAILWAY, SWITZERLAND

If you've always dreamed of reaching great heights, Switzerland's Jungfrau Railway is your ticket. This cogwheel line takes its passengers to the Jungfraujoch, Europe's highest railway station, which is over 3,400 metres above sea level.

### BERNINA EXPRESS, SWITZERLAND AND ITALY

Following valleys through Switzerland and Italy, the Bernina railway threads through the slopes as it makes its way from St. Moritz to Tirano. The line is World Heritage-listed due to the engineering feats that were required to cross the Bernina Pass.

### ZUGSPITZE RAILWAY, GERMANY

Reach the summit of Germany's highest mountain, the Zugspitze, aboard this historic rack railway. Incredible scenery of picturesque mountains, alpine forests and glaciers that shimmer like cut glass ensures that this railway is one of Germany's most spectacular.

### WEST HIGHLAND LINE, SCOTLAND

Scotland's West Highland Line, with the Jacobite Steam Train as its star, may be best known as the line of the Hogwarts Express in the *Harry Potter* movies, but traditionalists still call it the 'Iron Road to the Isles'. Climb through valleys and skirt romantic glens in the shadow of Ben Nevis.

### KYLE LINE, SCOTLAND

Completed in 1897, the Kyle Line will take you from Scotland's east to west. The final leg, between Stromeferry and Kyle of Lochalsh, required 31 cuttings and 29 bridges, all carved through solid rock; an incredible engineering feat for its time.



Immerse yourself in the romance of Neuschwanstein Castle, Germany

# Grand Alpine Explorer

## Munich to Zürich 14 Days

### INSIDER EXPERIENCES

- ☆ Savour a candlelit dinner while listening to the music of Mozart in Salzburg
- ☆ Embark on an enthralling journey on the Zugspitze Railway in Germany
- ☆ Enjoy panoramic alpine views on the Bernina Express as you travel between Switzerland and Italy
- ☆ Step aboard the famous Glacier Express for a journey from St. Moritz to Brig
- ☆ Visit Europe's highest railway station on the Jungfrau Railway in Switzerland

### HIGHLIGHTS & INCLUSIONS

- ✓ Operated by Travelmarvel's partner Great Rail Journeys
- ✓ 13 nights in premium accommodation
- ✓ Services of a Great Rail Journeys Tour Escort and expert local guides
- ✓ 22 meals – 13 breakfasts (B), 1 lunch (L) and 8 dinners (D)
- ✓ Airport transfers and tipping

**Day 1. Arrive Munich** You'll be met on arrival in Munich and transferred to your hotel. Located within view of the Alps, this lively city is the capital of Bavaria, as well as one of Germany's best-loved cities.

**Two Nights:** Munich, Maritim Hotel or similar.

**Day 2. Munich** Become immersed in the illustrious sights of Munich. With a rich culture and heritage, the city has a wonderful collection of museums, galleries and architecture. Take a guided walking tour of Munich, sampling and savouring the city's finest food and beer along the way. BD

**Day 3. Salzburg** ☆ Leave Munich behind, and board the train to Austria. Arrive in Salzburg, known over the world as the birthplace of Wolfgang Amadeus Mozart, as well as the setting for *The Sound of Music*. On arrival, embark on a walking tour with a local guide. Discover the Old Town, the World Heritage-listed centre with its collection of medieval and baroque buildings, and gorgeous mountain views. Afterwards, the rest of the day is at leisure. **At the Baroque**

banquet Hall of St. Peter's, enjoy a candlelit dinner accompanied by the stirring music of Mozart. **Three Nights:** NH Collection Salzburg City. BD

**Day 4. Salzburg** Today, you're free to enjoy Salzburg. Perhaps visit the Salzburg Fortress, also known as Hohensalzburg Castle, which is perched high above the city and offers stunning views from its peak. Or, try a Mozartkugel, a delicious chocolate named after Mozart. B

**Day 5. Austrian Lake District** Discover the beauty of the Austrian Lake District, heading first to Kaiservilla, the grand summer retreat of Habsburg Emperor Franz Josef I. The expansive park surrounding the residence, fashioned in the English style, was finished in 1860. Wander through the meticulously adorned grounds before you proceed to St. Gilgen. Continue to St. Wolfgang and enjoy a lake cruise. Enjoy time at leisure in Wolfgangsee before continuing to Mondsee. Perhaps visit the town's cloister church, used as the site of the wedding in *The Sound of Music*. Return to Salzburg for dinner. BD





**SAVE UP TO \$1,400 per couple\***  
See pages 18-19

**Day 6. Salzburg, Innsbruck**

This morning, leave Salzburg and travel First Class into the heart of the Austrian Alps. On arrival in Innsbruck, join a guided tour of this charming city set against the backdrop of the Austrian Alps.  
Two Nights: Hotel Innsbruck. BD

**Day 7. Innsbruck, Neuschwanstein Castle, Zugspitze Railway ☆**

Travel to Neuschwanstein Castle. Nestled in the Alps, it's a stunning sight with a storied history. Then, join an enthralling journey on the Zugspitze Railway, which ascends to the summit of Zugspitze, the highest mountain in Germany. B

**Day 8. Innsbruck, Swiss Alps, St. Moritz**

Start your day with a walking tour of Innsbruck before setting off on a rail journey through the Swiss Alps. Pass Liechtenstein and head into the Swiss town of Sargans. Here, change trains and travel alongside the Rhine River to Chur, before continuing to St. Moritz.  
Three Nights: St. Moritz, Hotel Schweizerhof or similar. BD

**Day 9. St. Moritz, Bernina Express, Tirano ☆**

Ride the Bernina Express, passing glaciers, rushing mountain streams and flower-sprinkled alpine meadows. Arrive in the Italian town of Tirano, where you'll have free time before the return journey to St. Moritz. BD

**Day 10. St. Moritz** Spend today as you please, soaking up the glamour of St. Moritz. B

**Day 11. Glacier Express, Interlaken ☆**

Step aboard the famous Glacier Express for a journey from St. Moritz to Brig, enjoying the incredible views through the panoramic windows of your First Class carriage. Savour a tasty two-course lunch in your seat. Change trains and continue to Interlaken.  
Three Nights: Hotel Interlaken. BLD

**Day 12. Jungfrau Railway ☆**

Leave Interlaken and travel through the foothills of the Alps to Lauterbrunnen, then join the Wengernalp Railway to Kleine Scheidegg. It is here your journey on the iconic Jungfrau Railway begins. Your final destination is Jungfrauoch, Europe's highest railway station. Enjoy free time at the summit station and perhaps explore its Ice Palace. B

**Day 13. Interlaken**

Wake to the breathtaking mountain vistas of Interlaken – this beautiful town is all yours to discover today. Spend time as you like, perhaps exploring the glacier-fed lakes, before a Farewell Dinner this evening. BD

**Day 14. Interlaken, Depart Zürich**

After breakfast, take the train to the airport in Zürich (unescorted) for your onward flight. B



The Bernina Express, Switzerland

From **\$9,495** per person, twin share

14 Days – Munich to Zürich (RJTAG14P)		
2025 Dates and Prices (A\$)	Best Price From*	Standard Price From
Per person, twin share		
Apr. 25	\$9,695	\$10,195
May 4, 9, 13	\$9,795	\$10,295
Jun. 20, 27; Jul. 4	\$9,595	\$10,095
Jul. 11	\$9,595	\$10,295
Jul. 18; Aug. 1, 15	\$9,795	\$10,495
Aug. 29; Sep. 5, 12	\$9,495	\$10,195

\*Best Price – includes Earlybird Savings and Early Payment Discount, for full terms and conditions see pages 18-19.

Solo travellers add on from \$2,250, enquire for details.

**Trip Notes**

**Mobility Rating Level 3: Comfortable Explorer.**

Itinerary and hotels may be subject to change. Please note that transfer on Day 14 is unescorted. See terms and conditions towards the back of the brochure.

For a detailed day-by-day itinerary, up-to-date prices, savings and departure dates, search **RJTAG14P** on [travelmarvel.com.au](http://travelmarvel.com.au)



Gornergrat train on a bridge passing a waterfall and the Matterhorn, Switzerland

# Classic Glacier Express

## London Return 11 Days

### INSIDER EXPERIENCES

- ☆ Join the historic narrow-gauge Bernina Express for a railway journey on the superb Bernina Line to Poschiavo
- ☆ Enjoy lunch on board the world-famous Glacier Express from Chur to Brig

### HIGHLIGHTS & INCLUSIONS

- ✓ Operated by Travelmarvel's partner Great Rail Journeys
- ✓ 10 nights in premium accommodation
- ✓ Services of a Great Rail Journeys Tour Escort and expert local guides
- ✓ 18 meals – 10 breakfasts (B), 2 lunches (L) and 6 dinners (D)
- ✓ Airport transfers and tipping
- ✓ Travel by cable car to Eggishorn Viewpoint, where a yodel guide will provide a demonstration

**Day 1. Arrive London** On arrival in London, you'll be met at the airport and transferred to your hotel. After settling in, enjoy the rest of the day at leisure.  
**Stay:** Pullman London St Pancras Hotel.

**Day 2. London, Paris, Strasbourg** Depart St Pancras International railway station by Eurostar for Paris, then change trains and continue on your journey by rail to the French city of Strasbourg. Enjoy dinner at a local restaurant.  
**Stay:** Strasbourg, Hotel Boma or similar. BLD

**Day 3. Strasbourg, Basel, Chur** Travel to Basel, then start the journey through the Swiss Alps to Chur, Switzerland's oldest town.  
**Three Nights:** Chur, Romantik Hotel Stern. BD

**Day 4. Chur, Poschiavo, St. Moritz** ☆  
 From Chur, join the historic narrow-gauge Bernina Express for a railway journey on the Bernina

Line. The ascent takes you through the Albula Tunnel and over the stunning Bernina Pass. Relish views of the snow-capped peaks and turquoise glacial lakes as you travel to Poschiavo for time at leisure. Wander amid pastel-coloured houses as you explore this picturesque town, part of the Italian-speaking region of Switzerland. Continue to the elegant alpine resort town of St. Moritz before returning to Chur in time for dinner at your hotel this evening. BD

**Day 5. Chur** With the entire day at leisure, you'll have the opportunity to explore Chur and its surrounding area. Perhaps wander through the cobbled streets of Chur's charming Old Town, home to a variety of restaurants and shops. Alternatively, you may like to make the most of the discounts included on your Swiss Travel Pass and discover the area by rail. Among the most popular options available to you is a journey through the Graubünden



region, home to towering peaks and breathtaking, wild landscapes. B

**Day 6. Chur, Glacier Express, Brig ☆**

Farewell Chur today and take the Glacier Express narrow-gauge train to Brig, enjoying incredible views through the panoramic windows of your carriage. Roll through the landscapes that have made Switzerland famous, passing sloping meadows, sprawling vineyards and lush forests, before crossing the iconic Landwasser Viaduct into the Rhine Valley. A two-course lunch is served at your seat during your journey aboard the world's slowest express train. Climbing steeply over the Oberalp Pass, we then spiral down before arriving in Brig. Four Nights: Brig, Hotel Ambassador. BLD

**Day 7. Zermatt** Today will be spent discovering the charming, car-free resort town of Zermatt. Board a train in Brig and head south along the River Rhône to Visp, where our ascent to Zermatt begins. While here, visit the Air Zermatt Heliport, where you will be given a behind-the-scenes look at the role the crew plays in rescue operations in this alpine region. Afterwards, enjoy time at leisure in Zermatt. You may like

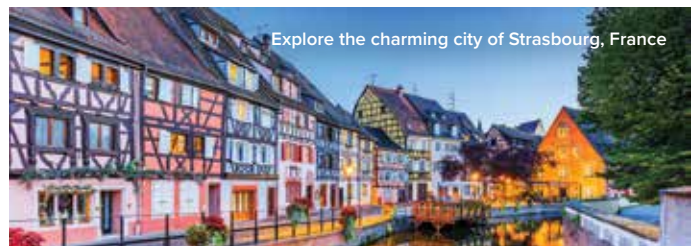
to reach the summit of the Gornergrat aboard the Gornergrat Mountain Railway, enjoying spectacular views of the Matterhorn. Later, return to Brig for dinner at your hotel. BD

**Day 8. Brig** Explore Brig at your own pace. You might like to explore the town's historic old quarter or use your Swiss Travel Pass to explore further afield. B

**Day 9. Brig, Spiez** Travel to Spiez Castle, in the town of Spiez, overlooking the waters of Lake Thun. A Swiss heritage site dating as far back as the 10th century, this impressive castle and its decorative gardens play host as you wander its halls and enjoy a wine tasting on the terrace. Afterwards, cruise across the lake to Thun, before returning to Brig for a Farewell Dinner. BD

**Day 10. Brig, London** Journey through France to Paris, where you'll connect with a Eurostar service and continue to London. Stay: Pullman London St Pancras Hotel. B

**Day 11. Depart London** The time has come to bid farewell to your rail adventure. This morning, you will be transferred to the airport for your onward flight. B



Explore the charming city of Strasbourg, France

From **\$8,195** per person, twin share

11 Days – London Return (RJTGEJ11)		
2025 Dates and Prices (A\$)	Best Price From*	Standard Price From
Per person, twin share		
Apr. 8, 16	<b>\$8,395</b>	\$8,895
Apr. 28	<b>\$8,295</b>	\$8,795
May 6, 14, 18, 26; Jun. 3	<b>\$8,395</b>	\$8,895
Jun. 11, 15, 19, 27; Jul. 9, 17	<b>\$8,195</b>	\$8,895
Jul. 25; Aug. 2	<b>\$8,295</b>	\$8,995
Aug. 10, 18, 30; Sep. 7, 15, 19, 23; Oct. 1, 9	<b>\$8,395</b>	\$9,095

\*Best Price – Includes Earlybird Savings and Early Payment Discount, for full terms and conditions see pages 18-19.  
Solo travellers add on from \$2,550, enquire for details.

**Trip Notes**

**Mobility Rating Level 2: Everyday Traveller.**  
Itinerary includes partial portage within Switzerland only (some handling of luggage may occasionally be required getting on and off trains). Itinerary and hotels may be subject to change. See terms and conditions towards the back of the brochure.

For a detailed day-by-day itinerary, up-to-date prices, savings and departure dates, search **RJTGEJ11** on [travelmarvel.com.au](http://travelmarvel.com.au)



Gornergrat train with waterfall, bridge and Matterhorn, Switzerland

# Glacier Express & St. Moritz

## London Return 9 Days

### INSIDER EXPERIENCES

- ☆ Ride the Bernina Express from Switzerland to Italy, passing glaciers, rushing mountain streams and flower-sprinkled alpine meadows
- ☆ Step aboard the famous Glacier Express for a journey from St. Moritz to Zermatt

### HIGHLIGHTS & INCLUSIONS

- ✓ Operated by TravelMarvel's partner Great Rail Journeys
- ✓ Eight nights in premium accommodation
- ✓ Services of a Great Rail Journeys Tour Escort and expert local guides
- ✓ 15 meals – 8 breakfasts (B), 1 lunch (L) and 6 dinners (D)
- ✓ Ride the Gornergrat Mountain Railway and enjoy spectacular views of the Matterhorn
- ✓ Tipping

#### Day 1. Arrive London, Cologne

This morning, board a Eurostar train from London St Pancras International Station for Brussels. Change trains and continue your journey by rail to the German city of Cologne. Enjoy an overnight stay in this beautiful city, known as the region's cultural hub. **Stay:** Cologne, Marriott Hotel or similar. D

#### Day 2. Cologne, St. Moritz

Today, you'll travel to one of the largest cities in Switzerland, Basel. Then, start the picturesque ascent through the Swiss Alps to glamorous St. Moritz, nestled in the Upper Engadine Valley. This elegant and exclusive resort town is continuously frequented by royalty. On arrival, take a short stroll to your hotel. **Three Nights:** St. Moritz, Hotel Schweizerhof. BD

#### Day 3. St. Moritz, Bernina Express, Tirano ☆

Ride the Bernina Express, which passes glaciers, rushing mountain streams and flower sprinkled alpine meadows. Travel through

stunning scenic surrounds, arriving in the Italian town of Tirano. Here, relish free time to explore before making your return journey. BD

#### Day 4. St. Moritz

Savour a relaxed breakfast this morning. With the entire day at leisure, you'll have the opportunity to explore St. Moritz by cable car. Or, you might wish to ascend the mountain viewpoint of Diavolezza, which offers stunning panoramas over the surrounding peaks. Alternatively, explore the mountains further afield with discounted fares using your St. Moritz Travel Pass. B

#### Day 5. St. Moritz, First Class Rail aboard the Glacier Express, Zermatt ☆

Step aboard the famous Glacier Express for a journey from St. Moritz to Zermatt, taking in the incredible views through the panoramic windows of your First Class carriage. Your journey takes you through the classic landscapes that have made Switzerland famous. On leaving St. Moritz, descend towards the valley floor, emerging from a rock



tunnel to cross the impressive Landwasser Viaduct and travel into the Upper Rhine Valley. A two-course lunch is served at your seat during the journey, the perfect addition to your time on board the slowest express train in the world. The train climbs steeply over the Oberalp Pass, the peak of the route, and spirals down before crossing the spectacular gorge at Brig. Arrive at Zermatt and head to your hotel, overlooked by the towering Matterhorn. The Matterhorn's mammoth size and geometric splendour make it a completely magnetic sight to behold.

**Three Nights:** Zermatt, Hotel Sonne. BLD

**Day 6. Zermatt, Gornergrat Mountain Railway** Make your ascent aboard the Gornergrat Mountain Railway today. Opened in 1898, it is the highest open-air cog-wheel railway in Europe. The train climbs to the 3,000-metre-high summit of the Gornergrat and offers spectacular views of the Matterhorn. On a clear day here, you can count 29 snowy peaks. After spending some time at the summit to relish the views over the Gorner Glacier, the second largest glacier in the Alps, descend and enjoy a guided tour of Zermatt. This charming, eco-friendly town is a car-free zone, with timbered buildings and a beautiful English church. B

**Day 7. Zermatt, Matterhorn Glacier Paradise** Today, travel by cable car up to the highest cable car station in Europe. The snow-covered alpine wonderland provides monumental views of the famous peak, and the enchanting ice palace – the highest of its kind in the world. The experience is further enhanced as you are lowered by a lift 15-metres inside the glacier, where you are then greeted by remarkable sculptures crafted from the perpetual ice that surrounds you, adding a decorative touch to a surreal landscape. BD

**Day 8. Zermatt, Strasbourg** This morning, travel via Visp back to Basel in Switzerland. Then, board the service to the French town of Strasbourg. Upon arrival, you may wish to stretch your legs and wander around the idyllic streets. The historic Alsatian city of Strasbourg will be quick to charm you. **Stay:** Strasbourg, LÉONOR Hôtel. BD

**Day 9. Depart London** Today, journey through France to connect with a Eurostar service and continue to London. Along the way, make the most of this wonderful mode of travel as you sit back and watch the captivating landscapes and quaint townships roll by. Your journey will come to an end later today at London St Pancras Station. B



City of Strasbourg, France

## From **\$8,295** per person, twin share

9 Days – London Return (RJTGZJ9)		
2025 Dates and Prices (A\$)	Best Price From*	Standard Price From
Per person, twin share		
May 12, 23	<b>\$8,395</b>	\$8,895
Jun. 2	<b>\$8,495</b>	\$8,995
Jun. 16, 30; Jul. 14, 28	<b>\$8,295</b>	\$8,995
Aug. 11, 25; Sep. 8, 22; Oct. 6	<b>\$8,295</b>	\$8,995

\*Best Price – Includes Earlybird Savings and Early Payment Discount, for full terms and conditions see pages 18-19.  
Solo travellers add on from \$1,500, enquire for details.

**Trip Notes**  
**Mobility Rating Level 3: Comfortable Explorer.**  
Itinerary includes partial portage within Switzerland only (some handling of luggage may occasionally be required getting on and off trains). Itinerary and hotels may be subject to change. See terms and conditions towards the back of the brochure.

For a detailed day-by-day itinerary, up-to-date prices, savings and departure dates, search **RJTGZJ9** on [travelmarvel.com.au](http://travelmarvel.com.au)



# Mountain Tops of Switzerland

## Basel to Zürich 8 Days

### INSIDER EXPERIENCES

- ☆ In Brig, ride the iconic red and white Glacier Express, enjoying lunch on board as you soak in the spectacular scenery
- ☆ Travel from Switzerland to Italy on one of the highest railway lines in the Alps aboard the World Heritage-listed Bernina Express

### HIGHLIGHTS & INCLUSIONS

- ✓ Operated by Travelmarvel's partner Great Rail Journeys
- ✓ Seven nights in premium accommodation
- ✓ Services of a Great Rail Journeys Tour Escort and expert local guides
- ✓ 14 meals – 7 breakfasts (B), 1 lunch (L) and 6 dinners (D)
- ✓ Transfers, portorage and tipping
- ✓ Cruise along the tranquil waters of Lake Brienz
- ✓ Board Switzerland's famous Giessbach funicular railway
- ✓ Travel on the steam-hauled, narrow-gauge Brienz-Rothorn Mountain Railway
- ✓ Journey on the Mount Pilatus Railway
- ✓ Discover the beautiful lakeside city of Lucerne with a two-night stay

**Day 1. Arrive Basel** Your discovery of Switzerland begins today as you arrive in Basel. Be taken to your hotel where you have the chance to meet your Great Rail Journeys Tour Escort and other travellers during a Welcome Dinner.

**Stay:** Basel, Hotel Schweizerhof or similar. D

#### Day 2. Interlaken, Giessbach

Wake to the beautiful surrounds of Switzerland today, perhaps taking a quiet moment to savour a coffee over breakfast. Then, join a train ride this morning, directly from Basel to Interlaken. From here, you'll board a boat on Lake Brienz, cruising across the tranquil waters to the heart of scenic Switzerland. The striking alpine waters reflect the green mountains like magic. Watch as the pretty towns and villages on the lake's shores pass by. Disembark and ride the famous Giessbach funicular railway to your mountaintop hotel.

**Two Nights:** Grandhotel Giessbach. BD

**Day 3. Brienz, Rothorn** Board one of the country's most scenic stretches of railway today on the Brienz-Rothorn Mountain Railway. Head to Brienz, where the steam-hauled train awaits. Begin the steady mountain ascent, crossing steep mountain trails, with the glittering water of Lake Brienz beneath you. As you gain height, the scenery becomes progressively greener, with jagged mountain peaks at eye level. At over 2,000 metres above sea level, you'll reach Rothorn, the summit of the rail journey. Disembark at the peak and explore at your own leisure. Then, it's back to the train for your descent to Brienz and Giessbach. BD

#### Day 4. Brig, St. Moritz ☆

After breakfast, travel by coach to Spiez, then by rail to Brig, where one of Switzerland's most famous trains await. The red and white Glacier Express is known for being the slowest express train, but also one of the most scenic rail journeys. Board the train and chug



Marvel at the idyllic Lake Lucerne, Switzerland

SAVE UP TO  
**\$1,400**  
per couple\*  
See pages 18-19



through the tunnels, and across countless bridges and viaducts. A sure highlight is when you ascend over 1,800 metres at the Oberalp Pass, with the train using cogwheels to conquer the steepest points. Lunch is served in the rail cars during your journey. Arrive in St. Moritz and check in to your centrally located hotel. Enjoy superb views over the lake from the front of the hotel. **Two Nights:** St. Moritz, Hotel Schweizerhof or similar. BL

**Day 5. Tirano** ☆

Connecting Italy and Switzerland with one of the highest railway lines in the Alps, the Bernina Express is a must on any rail-lover's list. Join this rail odyssey today, carving through the snow-capped scenery and lush hillsides to Tirano in northern Italy, travelling at an altitude of over 2,000 metres and enjoying views of turquoise glacial lakes speckled below. Once in Tirano, it's time to explore at leisure. There's a peaceful old quarter towards the east of the town, which you might like to head to for a rest after the excitement of your rail adventure. Later in the afternoon, it's time to head back to Switzerland. BD

**Day 6. Lucerne** Because Switzerland is so well known for its superb rail network, you're in

for another treat today. Travelling to Lucerne, join the world's steepest cogwheel railway. Aboard the Mount Pilatus Railway, with a gradient that reaches up to 48%, there are many moments on this journey reminiscent of a roller coaster rather than a rail track. Spend half an hour ascending almost two kilometres from Alpnachstad to Pilatus-Kulm, located just outside the city of Lucerne, where your hotel awaits. **Two Nights:** Lucerne, Hotel Pilatus-Kulm or similar. BD

**Day 7. Lucerne** After breakfast at your hotel, you may wish to set off on some independent sightseeing. Lucerne's most famous site is the Chapel Bridge, which divides the old and new towns. Built in the 14th century, this wooden bridge once served as protection against outside attacks on the city. Today, a series of paintings from the 17th century hang on the interior walls and tell the tale of Lucerne's history. There are also plenty of churches to visit, and wandering along the cobblestone streets is an equally enticing option. After you've explored the town, head back to your hotel for a Farewell Dinner. BD

**Day 8. Depart Zürich** Your incredible journey reaches an end this morning after breakfast. Transfer to Zürich airport by train. B



Bernina Express, Switzerland

From **\$6,995** per person, twin share

8 Days – Basel to Zürich (SGRMTS8P)

2025 Dates and Prices (A\$) Per person, twin share	Best Price From*	Standard Price From
Apr. 22; May 6, 13	\$7,195	\$7,695
Sep. 2, 9, 16	\$7,295	\$7,995
Oct. 7	\$6,995	\$7,695

\*Best Price – Includes Earlybird Savings and Early Payment Discount, for full terms and conditions see pages 18-19.

Solo travellers add on from \$1,500, enquire for details.

Trip Notes

**Mobility Rating Level 3: Comfortable Explorer.**

Itinerary and hotels may be subject to change. See terms and conditions towards the back of the brochure.

For a detailed day-by-day itinerary, up-to-date prices, savings and departure dates, search **SGRMTS8P** on [travelmarvel.com.au](http://travelmarvel.com.au)



# Edinburgh, the Highlands & Islands

## Edinburgh Return 9 Days

### INSIDER EXPERIENCES

- ☆ Join the Jacobite Steam Train for a journey to Mallaig on the final leg of the West Highland Line^
- ☆ Enjoy a cruise on Loch Ness and visit Urquhart Castle
- ☆ Listen to a chorus of bagpipes and try some traditional fare during a Scottish-themed evening in Edinburgh

### HIGHLIGHTS & INCLUSIONS

- ✓ Operated by Travelmarvel's partner Great Rail Journeys
- ✓ Eight nights in premium accommodation
- ✓ Services of a Great Rail Journeys Tour Escort and expert local guides
- ✓ 16 meals – 8 breakfasts (B) and 8 dinners (D)
- ✓ Airport transfers and tipping
- ✓ Enjoy one of the most breathtaking railway journeys in Europe aboard the Kyle Line

**Day 1. Arrive Edinburgh** Arrive in Scotland's much-loved capital, Edinburgh. Discover its fascinating history, unsurpassed beauty and friendly locals. You will be met at the airport and transferred to your hotel, situated close to the station.  
**Stay:** Edinburgh, Apex Hotel Waterloo Place or similar. D

**Day 2. Edinburgh, West Highland, Fort William** Journey by rail to Glasgow, before changing trains to one of the world's most incredible railway lines, the West Highland Line. Travel along a hillside ledge overlooking Gare Loch before entering the spectacular Highlands. Skirt the banks of Loch Lomond and ascend from Crianlarich to Upper Tyndrum and Rannoch Moor. Mighty mountains provide an imposing backdrop to the journey on the approach to Fort William.  
**Three Nights:** Fort William, Glenspean Lodge Hotel or similar. BD

**Day 3. Fort William, Isle of Mull** From Oban, board a ferry to Craignure on the Isle of Mull. Take in the rugged coastline, with sharply rising hills, endless greens, and exposed rock faces. Step ashore on the island for time at leisure. This afternoon, return to your hotel. BD

**Day 4. Fort William, Neptune's Staircase, Loch Linnhe** Travel by coach to Neptune's Staircase, an impressive set of eight locks operated by a team of at least three lock keepers. The 22-tonne lock gates were initially operated manually but have since been upgraded to a hydraulic system. It takes approximately one-and-a-half hours to pass from one end of the staircase to the other, where water overcomes gravity and nature to climb the hillside. From here, continue on to the waters of Loch Linnhe and set off on a cruise. Pass the stunning mountain landscapes of Glencoe before returning to your hotel. Enjoy a traditional Scottish dinner and whisky tasting. BD





See the Scottish countryside on the Jacobite Steam Train.



## From \$6,195 per person, twin share

### 9 Days – Edinburgh Return (RJTS9P)

2025 Dates and Prices (A\$) Per person, twin share	Best Price From*	Standard Price From
Mar. 19	\$6,195	\$6,695
Mar. 26; Apr. 2	\$6,395	\$6,895
Apr. 9	\$6,495	\$6,995
Apr. 16	\$6,695	\$7,195
Apr. 23	\$6,895	\$7,395
Apr. 28	\$7,095	\$7,595
Apr. 30	\$7,195	\$7,695
May 4	\$7,395	\$7,895
May 7, 11, 12, 14, 18, 21	\$7,595	\$8,095
May 25, 26, 28; Jun. 1	\$7,495	\$7,995
Jun. 8	\$7,295	\$7,995
Jun. 11, 15, 16, 22, 25, 30	\$7,495	\$8,195
Jul. 6, 13, 16	\$7,595	\$8,295
Jul. 21	\$7,695	\$8,395
Jul. 27	\$7,895	\$8,595
Aug. 3, 10, 17, 24	\$8,095	\$8,795
Aug. 31	\$7,895	\$8,595
Sep. 3	\$7,695	\$8,395
Sep. 7, 8, 10, 14, 17	\$7,495	\$8,195
Sep. 21, 22	\$7,295	\$7,995
Sep. 24	\$7,095	\$7,795
Sep. 28	\$6,995	\$7,695
Oct. 1	\$6,795	\$7,495
Oct. 8, 15	\$6,595	\$7,295

\*Best Price – Includes Earlybird Savings and Early Payment Discount, for full terms and conditions see pages 18-19.

Solo travellers add on from \$1,400, enquire for details.

### Trip Notes

#### Mobility Rating Level 2: Everyday Traveller.

Itinerary and hotels may be subject to change. ^Scotrail service may replace the Jacobite Steam Train on early and late departures. Please enquire at time of booking. See terms and conditions towards the back of the brochure.

For a detailed day-by-day itinerary, up-to-date prices, savings and departure dates, search **RJTS9P** on [travelmarvel.com.au](http://travelmarvel.com.au)

#### Day 5. Jacobite Steam Train^, Inverness ☆

Departing from Fort William, join the Jacobite Steam Train for a journey to Mallaig on the final leg of the West Highland Line. Your train will steam past Ben Nevis before climbing into the mountains around Glenfinnan, where you'll reach the line's most picturesque section and one of Scotland's most iconic engineering works – the 21-arched Glenfinnan Viaduct. It's a magical experience and no wonder that this train was featured as the Hogwarts Express in the Harry Potter films. As you head towards Mallaig, drop down to the sea's edge and watch as the landscape opens with the first views of the rugged 'Small Isles' – Rum, Eigg and Muck. After free time for lunch in Mallaig, continue by coach to explore Glenfinnan. Pass through the picturesque countryside to Inverness, the capital of the Highlands. Three Nights: Inverness Palace Hotel & Spa or similar. BD

#### Day 6. Inverness, Loch Ness ☆

During a cruise on Loch Ness, soak up the myth and mystery of the loch and its monster before disembarking at the 13th-century ruins of Urquhart Castle. Situated on a rocky promontory, the castle gives sweeping views over the loch. Later, return by coach to Inverness, and relish some time at leisure. BD

#### Day 7. Inverness, Kyle Line,

**Eilean Donan Castle** Today, enjoy one of the most breathtaking railway journeys in Europe aboard the Kyle Line. Wind through wooded hillsides and over sparse moors, climbing over the highlands and past charming lochs and seaside towns. Arrive at Kyle of Lochalsh, the end of the line, located across a short stretch of water from the Isle of Skye. Afterwards, visit Eilean Donan Castle, situated on a tiny island in Loch Duich. BD

#### Day 8. Inverness, Edinburgh ☆

Leaving Inverness behind this morning, you'll travel south by rail through the Cairngorms and via the towns of Aviemore and Kingussie, as well as the burgh of Pitlochry, before arriving back in Edinburgh. Transfer from the railway station to your hotel and enjoy the opportunity to try some traditional Scottish fare this evening. You'll also listen to a chorus of bagpipes and drums during a Scottish-themed evening to mark the end of your journey. Stay: Radisson Blu Edinburgh or similar. BD

#### Day 9. Depart Edinburgh

Your journey ends with a transfer to the airport today. B



# Enchanting Emerald Isle

## Dublin Return 9 Days

### INSIDER EXPERIENCES

- ☆ Enjoy an excursion to the Jameson Whiskey Distillery for a tour and tasting in Dublin
- ☆ Visit Dublin's famous Guinness Storehouse before dinner at Taylors Three Rock

### HIGHLIGHTS & INCLUSIONS

- ✓ Operated by Travelmarvel's partner Great Rail Journeys
- ✓ Eight nights in premium accommodation
- ✓ Services of a Great Rail Journeys Tour Escort and expert local guides
- ✓ 14 meals – 8 breakfasts (B) and 6 dinners (D)
- ✓ Transfers and tipping
- ✓ Enjoy a drive around the beautiful Ring of Kerry, a mystical and unspoilt region of Ireland
- ✓ Journey to Galway via the dramatic Cliffs of Moher and traverse the County Clare coastline

**Day 1. Arrive Dublin** Fly into Dublin, Ireland's lively capital. Be met on arrival and transferred to your hotel.

**Stay:** Dublin, Castleknock Hotel or similar.

D

**Day 2. Dublin, Cork** ☆

From Dublin, begin your rail journey through Ireland's lush rolling countryside. On arrival in Cork, relish some free time. Perhaps visit the symbol of the city, the Church of St Anne, and walk up the tower's stone stairs for stunning views of the city. Or, head to a local pub for some rich Irish stew with a side of mashed potatoes. **Later this afternoon, enjoy an excursion to the legendary Jameson Whiskey Distillery for a tour and tasting.**

**Stay:** The Metropole Hotel Cork or similar.

BD

**Day 3. Cork, Cobh, Blarney, Killarney** Today, delight in an excursion to Blarney Castle – one of Ireland's greatest treasures. Legend has it that kissing the Blarney Stone will bless you with the gift of the gab.

**Two Nights:** Killarney, Randles Hotel or similar.

BD

**Day 4. Ring of Kerry** Enjoy a 'Jaunting Car' horse-drawn carriage ride. Then, embark on a drive around the beautiful Ring of Kerry – a mystical and unspoilt region of Ireland. Take in the truly dramatic mountain scenery and superb seascapes. This evening, savour a dinner accompanied with traditional singing and dancing.

BD

**Day 5. Foynes, Cliffs of Moher, Galway** This morning, visit the Foynes Flying Boat & Maritime Museum. Then, indulge in a cup of Irish coffee.



SAVE UP TO  
**\$1,400**  
 per couple\*  
 See pages 18-19



Board a ferry from Tarbert across the Shannon Estuary to Clare, travelling onward by coach to the village of Doolin. Embark on a boat trip to see the Cliffs of Moher from the Atlantic Ocean. Be awed by the cliffs, which reach a height of 214 metres, and keep a look out for an array of seabirds. Later, check in to your hotel in Galway.  
**Two Nights:** Galway, The Ardilaun Hotel or similar. **BD**

**Day 7. Dublin** Return to Dublin by train today and check in to your hotel.  
**Two Nights:** Dublin, Camden Court Hotel or similar. **B**

**Day 8. Dublin** ☆  
 This morning, enjoy a tour of EPIC The Irish Emigration Museum before a city tour takes you to some of Dublin's most iconic sites. This afternoon, visit the famous Guinness Storehouse before sitting down to dinner at Taylors Three Rock. **BD**

**Day 9. Depart Dublin** After breakfast, transfer to the airport for your onward flight. **B**

**Day 6. Galway, Connemara** This morning, visit Kylemore Abbey, a spectacular waterside Benedictine nunnery in Connemara. Afterwards, travel on the Clifden railway. **B**



Take a guided tour of Jameson Whiskey Distillery in Dublin, Ireland



Visit Kylemore Abbey in Connemara, Ireland

From **\$7,095** per person, twin share

9 Days – Dublin Return (RJTIRS9P)		
2025 Dates and Prices (A\$)	Best Price From*	Standard Price From
Per person, twin share		
May 5, 12	\$7,195	\$7,695
May 26; Jun. 2	\$7,295	\$7,795
Jun. 16, 23; Sep. 8, 15	\$7,095	\$7,795

\*Best Price – Includes Earlybird Savings and Early Payment Discount, for full terms and conditions see pages 18-19.

Solo travellers add on from \$1,900, enquire for details.

**Trip Notes**

**Mobility Rating Level 2: Everyday Traveller.**

Itinerary and hotels may be subject to change. Portage is not included in hotels. See terms and conditions towards the back of the brochure.

For a detailed day-by-day itinerary, up-to-date prices, savings and departure dates, search **RJTIRS9P** on [travelmarvel.com.au](http://travelmarvel.com.au)



# Ultimate Norway & Sweden

## Stockholm to Oslo 17 Days

### INSIDER EXPERIENCES

- ☆ Gain insight into the unique culture of the Sámi at Båtsuoj Sámi Centre in Lapland
- ☆ Celebrate crossing the Arctic Circle in Sweden
- ☆ Cruise Norway's stunning Geirangerfjord
- ☆ Traverse Norway's steep terrain on the Flåm Railway
- ☆ Travel on Northern Europe's highest railway line, the Bergen Railway, in Norway

### HIGHLIGHTS & INCLUSIONS

- ✓ Operated by Travelmarvel's partner Great Rail Journeys
- ✓ 16 nights in premium accommodation
- ✓ Services of a Great Rail Journeys Tour Escort and expert local guides
- ✓ 29 meals – 16 breakfasts (B), 2 lunches (L) and 11 dinners (D)
- ✓ Transfers, portorage and tipping
- ✓ Travel through Lapland aboard the Inlandsbanan<sup>^</sup>
- ✓ Discover Trondheim, one of Norway's oldest cities
- ✓ Journey aboard the Rauma Railway in Norway
- ✓ Cruise Norway's longest and deepest fjord, Sognefjord
- ✓ Enjoy a tour of Bergen and Norway's historic Bryggen
- ✓ Take time to explore Sweden's capital of Stockholm and Norway's capital, Oslo

**Day 1. Arrive Stockholm** Be met and transferred to your hotel. Today, explore this modern city at your leisure, perhaps wandering the narrow streets of Gamla Stan. **Two Nights:** Stockholm, Scandic Continental or similar. D

**Day 2. Stockholm** Stockholm is yours to discover on a guided tour. Afterwards, indulge in a traditional Swedish 'fika', or coffee break. Tonight, visit a local restaurant at your leisure to enjoy a smörgåsbord, a Swedish tradition. B

**Day 3. Stockholm, Östersund** Head inland by InterCity train to Östersund, nestled on the shore of beautiful Lake Storsjön, Sweden's fifth-largest lake. **Stay:** Östersund, Clarion Grand or similar. B

**Day 4. Östersund, Inlandsbanan<sup>^</sup>, Lapland, Arjeplog** ☆ Travel into the wilderness of Lapland, home to the Sámi, who are renowned for their reindeer-herding skills. **You'll get a taste of their unique culture during a tour of Båtsuoj village.** **Two Nights:** Arjeplog, Hornavan Hotell. BD

**Day 5. Arjeplog, Arctic Circle, Jokkmokk** ☆ Leaving Arjeplog, you'll travel further north by coach across the Arctic Circle into the Land of the Midnight Sun. Afterwards, return to your hotel in Arjeplog. BD

**Day 6. Arjeplog, Bodø** Travel by coach from Arjeplog to Bodø in Norway. Visit the Norwegian Jekt Trade Museum. Relish the afternoon at leisure before dinner at your hotel. **Stay:** Bodø, Thon Hotel Nordlys. BD

**Day 7. Bodø, Verdal, Stiklestad** Enjoy the morning at leisure in Bodø before taking a train to Verdal. Transfer by coach to Stiklestad. Savour dinner at your hotel. **Stay:** Scandic Stiklestad or similar. BD

**Day 8. Stiklestad, Trondheim** Begin the day with a tour of the village of Stiklestad, the site of one of Norway's most famous battles. Afterwards, travel from Stiklestad to Trondheim, admiring the beautiful scenery along the way. **Two Nights:** Trondheim, Clarion Hotel. BLD



Travel on the Flåm Railway, Norway



SAVE UP TO  
**\$1,400**  
per couple\*  
See pages 18-19

**Day 9. Trondheim** Embark on a guided tour of Trondheim's best cultural highlights, including the famous Old Town Bridge, the Royal Residence and the Bakklandet, a neighbourhood filled with traditional streets and colourful wooden houses. **B**

**Day 10. Trondheim, Rauma Railway, Geiranger** On your rail journey today, navigate the same course as the emerald waters of the River Rauma as you head to Åndalsnes. Later, arrive in Geiranger, a small village in the Sunnmøre region of Norway. **Two Nights:** Hotel Union Geiranger or similar. **BD**

**Day 11. Geiranger, Geirangerfjord** ☆ Geirangerfjord is a World Heritage-listed site alive with colours and contrasts. Take in the exquisite scenery of the spectacular Geirangerfjord by boat. As you cruise along the serene, deep water, the steep sides of the fjord seem to tower over the boat. **BD**

**Day 12. Geiranger, Flåm** Leave Geiranger by coach and travel through Norway's incredible fjord country, stopping at the Kaupanger Stave Church en route. Your next overnight destination is Flåm, a tiny, quaint village. **Stay:** Flåm, Fretheim Hotel. **BD**

**Day 13. Flåm Railway, Myrdal, Sognefjord, Bergen** ☆ This morning, set out on a cruise of

Nærøfjord. Travel by coach back to Flåm, where you'll board the Flåm Railway, one of the steepest railways in the world. Disembark in Myrdal then travel by train to the magnificent city of Bergen. **Two Nights:** Bergen, Thon Hotel Orion. **BD**

**Day 14. Bergen** Begin your day with a tour of Bergen, including the historic Bryggen. Delight in a delicious seafood lunch at Bergen Fish Market. There will be plenty of time to explore with the rest of the day at leisure. **BL**

**Day 15. Bergen, Bergen Railway, Oslo** ☆ Prepare for a magnificent journey on Northern Europe's highest railway line, the Bergen Railway. Descend into Oslo, perhaps taking a stroll around the capital city before your Farewell Dinner. **Two Nights:** Oslo, Thon Hotel Opera. **BD**

**Day 16. Oslo** Set out on an exciting sightseeing tour of Oslo's most famous sights. This city is known for its stunning natural beauty, rich history and lively culture. With the afternoon at leisure, you might opt to explore landmarks such as the Akershus Fortress, revel in outdoor adventures at Oslomarka forest or savour some authentic Norwegian cuisine. **B**

**Day 17. Depart Oslo** Enjoy a free morning in Oslo before transferring to the airport. **B**



Discover the picturesque waterways of Trondheim, Norway

From **\$10,495** per person, twin share

**17 Days – Stockholm to Oslo (RJTACJ17P)**

2025 Dates and Prices (A\$)		
Per person, twin share	Best Price From*	Standard Price From
Jun. 6	\$11,095	\$11,595
Jun. 20	\$10,695	\$11,395
Jul. 11, 25	\$10,995	\$11,695
Aug. 8, 15, 22	\$10,895	\$11,595
Sep. 5, 12, 19	\$10,495	\$11,195

\*Best Price – Includes Earlybird Savings and Early Payment Discount, for full terms and conditions see pages 18-19.

Solo travellers add on from \$3,700, enquire for details.

**Trip Notes**

**Mobility Rating Level 4: Active Adventurer.**

Itinerary and hotels may be subject to change. Your luggage will be transported between hotels. Porterage is not included in hotels. ^Inlandsbanan Train operates on July and August departures only. Departures in all other months will travel the same route by coach. See terms and conditions towards the back of the brochure.

For a detailed day-by-day itinerary, up-to-date prices, savings and departure dates, search **RJTACJ17P** on [travelmarvel.com.au](http://travelmarvel.com.au)



# Top to Toe of Italy

## Venice to Catania 15 Days

### INSIDER EXPERIENCES

- ☆ Take a rail excursion through Tuscany to Pisa and Lucca
- ☆ Visit an Italian farmhouse for a delicious lunch, followed by a tasting of limoncello en route to Sorrento
- ☆ Join a local chef and pizza-making expert to learn the secrets of making authentic pizza in Sorrento
- ☆ Take a train, which is uniquely transferred by a special ferry to the alluring island of Sicily
- ☆ Ride the Circumetnea train around Sicily's Mount Etna

### HIGHLIGHTS & INCLUSIONS

- ✓ Operated by Travelmarvel's partner Great Rail Journeys
- ✓ 14 nights in premium accommodation
- ✓ Services of a Great Rail Journeys Tour Escort and expert local guides
- ✓ 21 meals – 14 breakfasts (B), 1 lunch (L) and 6 dinners (D)
- ✓ Transfers and tipping
- ✓ See St Mark's Basilica, Doge's Palace and the iconic canals of Venice
- ✓ Enjoy a guided tour of Rome, which includes the Colosseum, Roman Forum and Trevi Fountain
- ✓ Visit Sorrento and the beautiful Amalfi Coast

**Day 1. Arrive Venice** Open squares, dreamy canals and broad boulevards of Renaissance architecture – there really is nothing quite like the beauty of Venice. Upon arrival, you will be met and transferred to your hotel.  
Two Nights: Venice, Hotel Excelsior or similar. D

**Day 2. Venice** With its unique cityscape and rich heritage as part of the Byzantine Empire, Venice has enchanted visitors for centuries. You'll enjoy a guided tour, admiring landmarks such as St Mark's Basilica and the dazzling Doge's Palace. The afternoon is free for you to explore. B

**Day 3. Venice, Florence** Leaving Venice, board your high-speed train to Florence. Here, you will embark on a tour of this fascinating city. Afterwards, during free time, perhaps take a stroll through the alluring Boboli Gardens or wander down to the Arno.  
Three Nights: Florence, Hotel de la Ville or similar. BD

**Day 4. Florence, Siena** This morning, you'll travel to the quintessentially Tuscan city of Siena. Its well-preserved centre

is interlinked by a web of narrow streets that lead to the Campo, a grand piazza. Take a guided tour and see sights that include the Siena Cathedral, which is constructed from strips of black and white marble. B

**Day 5. Florence, Pisa, Lucca** ☆ On arrival in Pisa, a guided tour takes you to the Field of Miracles. See the romanesque Duomo and the world-famous Leaning Tower of Pisa. Next, enjoy a Tuscan rail excursion to Lucca. Enjoy free time to explore the walled city's medieval core and ramparts, and perhaps visit the Guinigi Tower, known for the majestic oak tree growing from its top. Return to Florence and enjoy an evening at leisure. B

**Day 6. Florence, Rome** Today, set your sights on the Eternal City as you travel to Rome. Here, you'll discover a treasure trove of culture and history. On arrival, check in to your hotel.  
Three Nights: Rome, NH Collection Roma Palazzo Cinquecento or similar. BD

**Day 7. Rome** See the Colosseum, Roman Forum and Trevi Fountain



Witness panoramic views in Florence, Italy



during a guided tour. Then, spend the afternoon discovering Rome for yourself – sample some culinary delights as you wander the streets or view the ceiling of the Sistine Chapel in Vatican City. **B**

**Day 8. Rome** With a day at leisure, perhaps climb the famous Spanish Steps, or stand in awe beneath the domed ceiling of the Pantheon. **B**

**Day 9. Rome, Naples, Sorrento** ☆  
Travel by train to Naples, then continue to Sorrento via coach. En route, visit an Italian farmhouse for a delicious lunch, followed by a tasting of limoncello. In Sorrento, take a guided walking tour down narrow, cobbled streets, where you'll see a mix of palace buildings and quaint old churches. **Three Nights:** Hilton Sorrento Palace. **BL**

**Day 10. Sorrento, Amalfi Coast** ☆  
The Amalfi Coast's soaring cliffs and olive groves are both dizzying and wonderful. Today, sail to Positano, an unspoilt village perched on the cliffside, where pretty pastel houses seemingly tumble into the turquoise sea. Enjoy a little time to soak up its picture-perfect beauty before continuing on to Amalfi. Here, you have free time to discover the town's historic delights, before returning to Sorrento. Tonight, join a local chef to learn the secrets of making authentic Italian pizza. **BD**

**Day 11. Sorrento, Pompeii** Travel by train to Pompeii, which was

buried in ash by Mount Vesuvius' eruption in AD79. Take a guided tour of the lost city and see public buildings like the amphitheatre and a selection of private villas. **BD**

**Day 12. Sorrento, Salerno, Giardini Naxos** ☆  
Transfer to Salerno for a train journey along Italy's west coast. In Villa San Giovanni, the train joins a special ferry to cross the Straits of Messina to Sicily. **Three Nights:** Giardini Naxos, Hellenia Yachting Hotel or similar. **B**

**Day 13. Giardini Naxos, Mount Etna, Circumetnea Railway** ☆  
Today, visit Mount Etna, an active stratovolcano that towers over the city of Catania on the island of Sicily. Take the winding Circumetnea train around the base of Mount Etna, passing through rugged lava plains. **B**

**Day 14. Giardini Naxos, Taormina**  
Today, head out on a guided tour of Taormina's highlights, including the spellbinding Teatro Greco, an immaculately preserved Greek-style amphitheatre. After the tour, enjoy some time to discover why this is one of Sicily's most popular summer destinations. This evening, enjoy a Farewell Dinner. **BD**

**Day 15. Giardini Naxos, Depart Catania** After breakfast this morning, your rail adventure draws to a conclusion. Transfer to Catania airport for your onward flight. **B**



Be mesmerised by Sorrento, Italy

From **\$10,795** per person, twin share

**15 Days – Venice to Catania (RJTTTG15P)**

2025 Dates and Prices (A\$) Per person, twin share	Best Price From*	Standard Price From
Apr. 28	\$10,995	\$11,495
May 12, 26; Jun. 2	\$11,195	\$11,695
Sep. 8, 15, 22	\$10,995	\$11,695
Oct. 6	\$10,795	\$11,495

\*Best Price – Includes Earlybird Savings and Early Payment Discount, for full terms and conditions see pages 18-19.

Solo travellers add on from \$5,600, enquire for details.

**Trip Notes**

**Mobility Rating 4: Active Adventurer.**

Itinerary and hotels may be subject to change. See terms and conditions towards the back of the brochure.

For a detailed day-by-day itinerary, up-to-date prices, savings and departure dates, search **RJTTTG15P** on [travelmarvel.com.au](http://travelmarvel.com.au)



# Spain & Morocco Adventure

## Barcelona to Marrakesh 13 Days

### INSIDER EXPERIENCES

- ☆ Enjoy a visit to the iconic World Heritage-listed Royal Alcázar of Seville
- ☆ Be treated to a dinner and Moroccan folklore show in Marrakesh
- ☆ Discover the foothills of the Atlas Mountains and take part in a traditional cooking class outside Marrakesh

### HIGHLIGHTS & INCLUSIONS

- ✓ Operated by Travelmarvel's partner Great Rail Journeys
- ✓ 12 nights in premium accommodation
- ✓ Services of a Great Rail Journeys Tour Escort and expert local guides
- ✓ 25 meals – 12 breakfasts (B), 5 lunches (L) and 8 dinners (D)
- ✓ Transfers and tipping
- ✓ In the historic Moroccan town of Rabat, see the Old Medina, the Kasbah, Oudaya Gate and Mohamed Mausoleum
- ✓ Spend the day discovering Fez on a guided tour of this historic Moroccan city's iconic sights
- ✓ Visit Morocco's former Imperial capital, Meknes, and the archaeological site of Volubilis
- ✓ Embark on a tour of Marrakesh and discover its historic ramparts, secret tombs and colourful souks

**Day 1. Arrive Barcelona** Your journey begins in the vibrant city of Barcelona. Be met at the airport and transferred to your hotel.  
Two Nights: Barcelona, Hotel Catalonia Gracia or similar.

**Day 2. Barcelona** Barcelona's charm is irresistible. Today, you will discover the city's highlights on a guided walking tour, starting at the picturesque tree-lined Las Ramblas. Continue to Plaça de Catalunya, a lively square steeped in history. Later, be inspired by the magical, twisted turrets of the Sagrada Família before wandering through the Old Town and Gothic Quarter. The afternoon is yours to spend at leisure. Enjoy dinner at a local restaurant this evening. BD

**Day 3. Barcelona, Seville** Board a high-speed train bound for Seville this morning. Home to beautiful baroque churches, winding medieval lanes and lavish palaces, this southern Spanish city will leave you in awe. Transfer to your hotel and spend the rest of the afternoon at leisure.  
Two Nights: Seville, Hotel Casa Romana or similar. BD

**Day 4. Seville** ☆ Enjoy a visit to the World Heritage-listed Royal Alcázar of Seville. A local guide will show you around this magnificent Moorish royal palace, considered to be one of the most outstanding examples of mudéjar art in existence. Spend the rest of the afternoon at leisure. Perhaps head out to the humble Triana neighbourhood in search of the passionate flamenco music for which Seville is famous. BL

**Day 5. Seville, Casablanca** Bid farewell to Spain as you cross the Straits of Gibraltar and arrive in the Moroccan port of Tangier. This city has long been regarded as the gateway to Africa. Later, travel by fast train to the thriving city of Casablanca.  
Stay: Casablanca, Radisson Blu Hotel. BD

**Day 6. Casablanca, Rabat, Fez** Discover the unique wonders of Casablanca during a guided tour this morning. This port city offers an enticing blend of old and new, with the Hassan II Mosque and its 210-metre minaret as its centrepiece. Visit the League of Arab States Park and the





Tour the Royal Alcázar of Seville, Spain



Mohammed V Square. Travel to the city of Rabat, Morocco's capital, and enjoy lunch at a local restaurant. Later, visit the Old Medina, the Kasbah and the Oudaya Gate before boarding a train bound for the city of Fez. **Three Nights:** Fez, Fes Marriott Hotel Jnan Palace. BLD

**Day 7. Fez** Founded more than 1,200 years ago, Fez is one of the oldest continuously inhabited medieval settlements in the world. On a guided tour, visit iconic sights including the Great Gateway of the Royal Palace and the Kasbah Cherarda fortifications. Wander through the World Heritage-listed Old Town, passing bustling spice markets and souks. Later, enjoy a special dinner and traditional dance performance. BLD

**Day 8. Meknes, Volubilis** Uncover the beauty of Meknes, an enchanting city famed for its imperial past. See the lavish Bab el-Mansour and its mosaic tilework, the ruins of Agouda Busin, the Royal Gardens and the Royal Stables. Later, discover Volubilis, Morocco's best-preserved archaeological site. After lunch at Volubilis Inn, explore the Roman ruins, the Baths of Gallienus, the Forum and the House of Venus before returning to Fez. BL

**Day 9. Fez, Marrakesh** Journey by train to Marrakesh, a kaleidoscope of colours and spices that will delight your senses. Here, discover

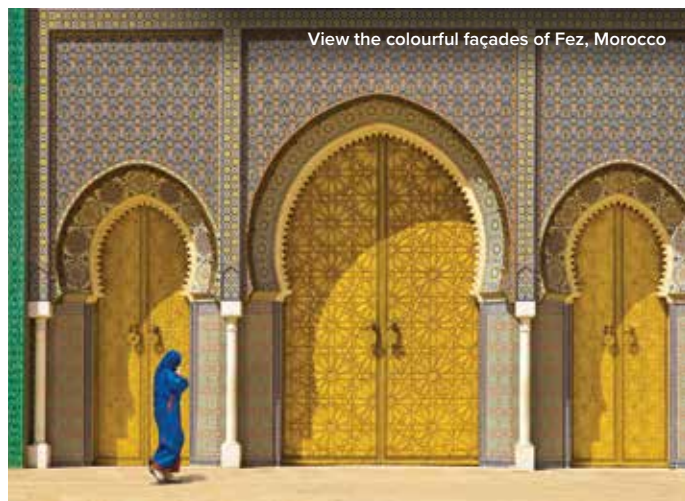
bustling souks, sprawling palaces and winding medinas. Check in to your hotel before dinner. **Four Nights:** Marrakesh, Mövenpick Hotel Mansour or similar. BD

**Day 10. Marrakesh** ✨ Embark on a tour of Marrakesh and discover its diverse highlights before enjoying an afternoon at leisure. This evening, be treated to dinner and a Moroccan folklore show. BD

**Day 11. Marrakesh, Foothills of the Atlas Mountains, Berber Villages** ✨ Today, venture into the foothills of the Atlas Mountains and take part in a traditional Moroccan cooking class. Guided by an experienced chef, try your hand at creating some of Morocco's best-loved dishes ahead of a delicious alfresco lunch. Continue into Berber country and see hamlets of traditional baked clay houses scattered throughout the Ourika Valley and visit a typical Berber home for a glass of traditional mint tea. BL

**Day 12. Marrakesh** Enjoy a day at leisure to explore. Indulge in a Farewell Dinner with your fellow travellers at your hotel this evening. BD

**Day 13. Depart Marrakesh** Your journey comes to an end today with a transfer to the airport for your onward flight. B



View the colourful façades of Fez, Morocco

From **\$7,895** per person, twin share

**13 Days – Barcelona to Marrakesh (RJTMAG13P)**

2025 Dates and Prices (A\$) Per person, twin share	Best Price From*	Standard Price From
Mar 31	<b>\$7,895</b>	\$8,395
Jun. 2	<b>\$8,095</b>	\$8,595
Sep. 1, 29; Oct. 13	<b>\$7,895</b>	\$8,595

\*Best Price – Includes Earlybird Savings and Early Payment Discount, for full terms and conditions see pages 18-19.

Solo travellers add on from \$3,000, enquire for details.

**Trip Notes**

**Mobility Rating Level 3: Comfortable Explorer.**

Itinerary and hotels may be subject to change. See terms and conditions towards the back of the brochure.

For a detailed day-by-day itinerary, up-to-date prices, savings and departure dates, search **RJTMAG13P** on [travelmarvel.com.au](http://travelmarvel.com.au)



Sunset at Donan Castle, Scotland

# Edinburgh, the Highlands & Islands with European Gems

## Edinburgh to Budapest 23 Days

### INSIDER EXPERIENCES

- ☆ Travel on Scotland's Jacobite Steam Train to Mallaig^
- ☆ Soak up the mystery of Loch Ness and visit Urquhart Castle
- ☆ Listen to a chorus of bagpipes and sample some traditional fare during a Scottish-themed evening in Edinburgh
- ☆ Explore World Heritage-listed Augustusburg Castle in Brühl, Germany
- ☆ Get a glimpse into local life as you embark on a culinary walking tour in Miltenberg, Germany
- ☆ Enjoy a festive night of Bavarian food, music and folk dancing on board your river ship in Germany

### HIGHLIGHTS & INCLUSIONS

- ✓ Rail itinerary operated by Travelmarvel's partner Great Rail Journeys
- ✓ Eight nights in premium accommodation
- ✓ 14 nights cruising on a contemporary Travelmarvel river ship
- ✓ Services of a Great Rail Journeys Tour Escort, Travelmarvel Cruise Director and local guides
- ✓ 56 meals – 22 breakfasts (B), 13 lunches (L) and 21 dinners (D)
- ✓ Onboard water stations, plus tea and coffee, soft drink, beer and local wine during lunch and dinner on your cruise
- ✓ Transfers, port charges, portage and tipping

**Day 1. Arrive Edinburgh** Be met at the airport and transfer to your centrally located hotel.

**Stay:** Edinburgh, Apex Hotel Waterloo Place or similar. D

**Day 2. Edinburgh, West Highland Line, Fort William** Head to Glasgow, before changing trains for a journey on the West Highland Line. Arrive at Fort William and transfer to your hotel. **Three Nights:** Fort William, Glenspean Lodge Hotel or similar. BD

**Day 3. Fort William, Isle of Mull** Venture to the town of Oban. Board a ferry and cruise to Craignure on the Isle of Mull. Catch sight of Duart Castle, the ancestral home of the Maclean Clan. Later, return to your hotel for the evening. BD

**Day 4. Fort William, Neptune's Staircase, Loch Linnhe** Travel to Neptune's Staircase. Discover Loch Linnhe and set off on a cruise. Pass Glencoe before a traditional Scottish dinner and whisky tasting. BD

**Day 5. Fort William, Jacobite Steam Train^, Inverness** ☆ Departing from Fort William, join the Jacobite Steam Train^ and marvel at Ben Nevis and the Glenfinnan Viaduct. Head towards Mallaig on

the final leg of the West Highland Line for views of the rugged 'Small Isles'. Return to Fort William, then continue by coach through the countryside to Inverness.

**Three Nights:** Inverness Palace Hotel and Spa or similar. BD

**Day 6. Inverness, Loch Ness** ☆ During a cruise, soak up the mystery of Loch Ness before disembarking at Urquhart Castle. Then, you have free time to explore the beauty of Inverness. B

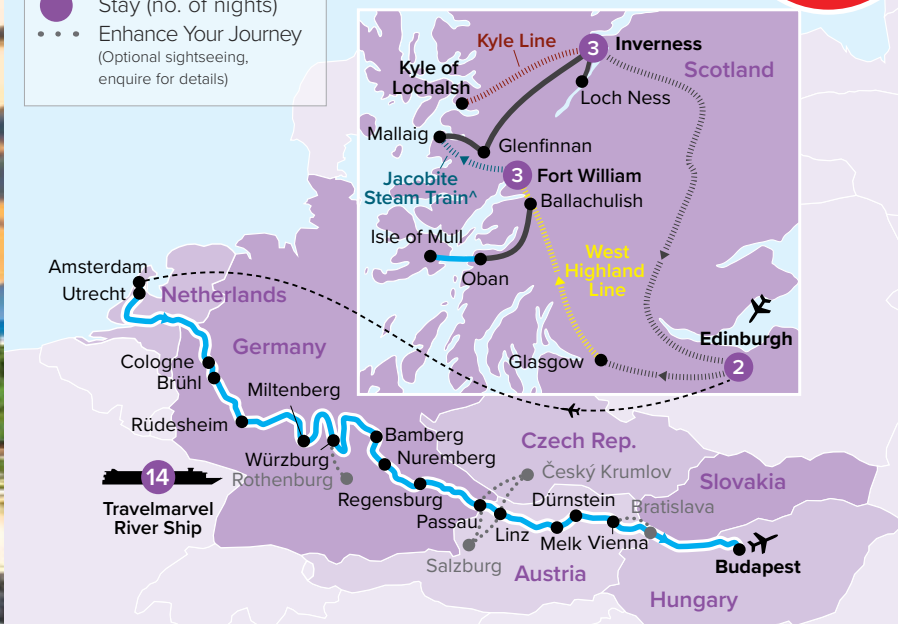
**Day 7. Inverness, Kyle Line, Eilean Donan Castle** Enjoy a journey on the Kyle Line. Arrive at Kyle of Lochalsh, located across a stretch of water from the Isle of Skye. Afterwards, explore the stunning Eilean Donan Castle. BD

**Day 8. Inverness, Edinburgh** ☆ Travel south by rail through the Cairngorms and via Aviemore, Kingussie, and the burgh of Pitlochry, before arriving back in Edinburgh. Transfer from the railway station to your hotel. This evening, try some traditional Scottish fare and listen to bagpipes and drums. **Stay:** Edinburgh, Radisson Blu Hotel or similar. BD



- Coach
- Rail
- Cruise
- Flight (included)
- Stay (no. of nights)
- Enhance Your Journey (Optional sightseeing, enquire for details)

**SAVE UP TO**  
**\$5,600**  
per couple\*  
See pages 18-19



Edinburgh, the Highlands & Islands with European Gems

**Day 9. Edinburgh, Amsterdam,**

**Embark Ship** After your flight to Amsterdam, transfer to your Travelmarvel river ship. This evening, meet your Cruise Director and fellow passengers at a Welcome Reception.

14 Nights: Aboard your Travelmarvel river ship. BD

**Day 10. Amsterdam, Utrecht**

Board a glass-top boat and explore Amsterdam with a local guide, before enjoying free time. Travel by coach to Utrecht, via Rembrandt's Windmill. Set off along the Rhine and prepare for tonight's special Gala Welcome Dinner. BLD

**Day 11. Cologne, Brühl** ☆

Embark on a coach tour through Cologne. Take a short drive to Brühl and visit the World Heritage-listed Augustusburg Castle. Walk through the parks and gardens between the castle and the lodge. BLD

**Day 12. Rhine Gorge, Rudesheim**

Dock in Rudesheim and board the Winzerexpress mini-train, bound for Siegfried's Mechanical Musical Instrument Museum. BLD

**Day 13. Miltenberg** ☆

Get a glimpse into local life as you embark on a culinary walking tour in Miltenberg. This evening, enjoy a superb dinner on board. BLD

**Day 14. Würzburg**

Board a coach and travel through the rolling hills to Würzburg. Later, indulge in an optional visit to medieval Rothenburg. BLD

**Day 15. Bamberg**

Cruise along the last stretch of the Main River to Bamberg. Relish an afternoon

of free-time or a guided tour. This evening, your ship will reach the Main-Danube Canal. BLD

**Day 16. Nuremberg** Explore the town of Nuremberg before cruising through the Main-Danube Canal. BLD

**Day 17. Regensburg** ☆

Spend the day in Regensburg. Then, take an optional tour to Kuchlbauer's World of Beer in Abensberg. Enjoy a Bavarian experience on board with local beer and snacks, accompanied by folk music, song and dance. BLD

**Day 18. Passau, Linz** Arrive in the 'Three Rivers City' of Passau, where the rivers Inn and Ilz join the Danube. Join an optional tour to Český Krumlov in the Czech Republic, or travel to Salzburg and enjoy the sights from *The Sound of Music*. BLD

**Day 19. Melk, Dürnstein**

See Melk Abbey with a local guide. Cruise through the Wachau Valley to Dürnstein. You are free to explore Dürnstein or perhaps join an optional tour to taste some of the region's wine. BLD

**Day 20. Vienna** Join a walking tour of Vienna's main sites. This evening, enjoy an optional concert. BLD

**Day 21. Vienna** Today is yours to explore Vienna. This evening, set sail for Hungary as you enjoy a Captain's Farewell Dinner. BLD

**Day 22. Budapest** Explore the city with a local guide. BLD

**Day 23. Disembark Ship, Depart Budapest** Disembark and transfer to the airport for your onward flight. B



Explore Miltenberg, Germany

From **\$14,095** per person twin share

**23 Days – Edinburgh to Budapest (EUTCSHS23P)**

2025 Dates and Prices (A\$) Per person twin share	Best Price From*	Standard Price From
May 4	\$15,395	\$17,695
May 18	\$15,595	\$17,895
Jun. 1	\$15,495	\$17,795
Jul. 13	\$14,095	\$16,895
Jul. 27	\$14,395	\$17,195
Aug. 10	\$15,295	\$18,095
Aug. 24	\$15,695	\$18,495
Sep. 7	\$15,095	\$17,895
Sep. 21	\$14,495	\$17,295
Sep. 22	\$14,195	\$16,995

\*Best Price – Includes Earlybird Savings and Early Payment Discount, for full terms and conditions see pages 18-19.

Solo travellers add on from \$7,500, enquire for details.

**Trip Notes**

**Mobility Rating Level 2: Everyday Traveller.**

The included flight from Edinburgh to Amsterdam is not escorted. ^Scotrail service may replace the Jacobite Steam Train on early and late departures. Prices based on a Cat. LD Window Stateroom. Please enquire for Cabin Upgrades. See terms and conditions towards the back of the brochure.

For a detailed day-by-day itinerary, up-to-date prices, savings and departure dates, search **EUTCSHS23P** on [travelmarvel.com.au](http://travelmarvel.com.au)

# Discover Asia

Immerse yourself in worlds that are a delight to the senses

Asia is endlessly contrasting, fascinating and beautiful. Wherever you choose to go, travelling by rail with Travelmarvel is sure to be a memorable experience.

## JAPAN

Japan is a land where ancient customs meet cutting-edge technology and simple, traditional wooden villages co-exist with modern, high-energy cities. Navigating the nation's extensive and legendary rail network is fast, safe, reliable and remarkably efficient. Japan pioneered high-speed rail travel, with the world's first high-speed rail system, Tokaido Shinkansen, commencing operations in 1964. Known as bullet trains, Shinkansen trains connect the major cities of Tokyo, Nagoya and Osaka, and transport 190 million passengers per year across the country at a top speed of 320 kilometres per hour.

Of the world's 50 busiest train stations, 46 are in Japan. The world's most populous city, Tokyo, is where you'll find the busiest train station, Shinjuku Station, which is used by 3.6 million people per day. Tokyo's metro system carries, on average, 6.84 million people per day across 195 kilometres of tracks on a network of 179 stations. Outside of Tokyo's dazzling cityscape, a multitude of regional highlights are but a short ride away. Discover wonders including Matsumoto, Takayama and Hakodate, and, of course, Japan's tallest peak and greatest icon, Mount Fuji.

## INDIA

India has a rich and colourful history with the railcar, dating back to the first passenger line, which began operating in 1853 on a 34-kilometre stretch between Bombay, now Mumbai, and Thane.

Today, India's national railway network comprises more than 126,000 kilometres of tracks. Ride this glorious network to experience the colour palette of the country, from the Pink City in Jaipur to the many shifting tones of the Taj Mahal. Travel to Shimla through the foothills of the Himalayas aboard the heritage Toy Train. Delhi, the nation's incredible capital, is bursting with fascinating attractions including Jama Masjid, the city's largest mosque. Delight in Mumbai's delicious cuisine and robust, traditional culture. Further off the beaten track, you'll find Ranthambore National Park, home to the Bengal tiger, plus a plethora of mammals, reptiles and bird species. These include leopards, striped hyenas, sloth bears, macaques, serpent eagles and Bengal tigers. Discover India's southern states of Tamil Nadu, Karnataka and Kerala and board the famous Toy Train that passes through Nilgiri Mountain to Coonoor.

## CHINA

Combining remarkable wilderness with exhilarating modernisation, China is a country of great wonder and beauty. Witness the awe-inspiring Great Wall of China near Beijing. Travel aboard high-speed bullet trains to experience First-Class modern carriages as you traverse East China at a speed of 186km per hour. Visit Xi'an to see the Terracotta Army and Chengdu to savour the flavours of Sichuan. Plus, spend three nights on board the Victoria Jenna, cruising through the Yangtze River.





Soar past Mount Fuji on a bullet train, Japan



# ASIA'S ICONIC Trains & Railways

ADMIRE ASIA'S REGIONS ON AN UNPARALLELED JOURNEY



Traverse Japan by bullet train



Journey on high-speed trains, China

From heritage trains that hark back to a colonial past, to high-speed marvels that criss-cross the continent, the iconic railways of Asia are the perfect way for travellers to truly experience the local sights and culture.

#### **BULLET TRAINS – JAPAN**

Shinkansen refers to the dedicated high-speed Japanese rail network that provides a link to most major cities on the islands of Honshu and Kyushu. The name also refers to the trains that run on the network, also known as bullet trains. Renowned for their punctuality, comfort and safety, the trains are frequent, fast and regularly run at speeds of up to 300 kilometres per hour. The trains offer comfortable reclining seats with plenty of leg room and large windows.

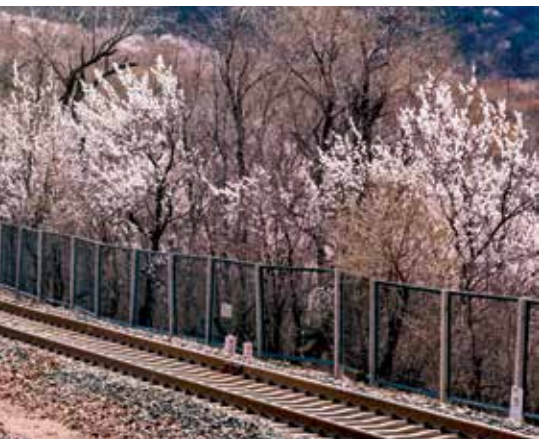
There are usually refreshment trolleys selling a range of snacks and beverages throughout the journey.

#### **ROMANCECAR – JAPAN**

Journey along the picturesque narrow-gauge line from Tokyo to Odawara aboard a Romancecar train. Extremely comfortable and spacious, Romancecar trains also boast panoramic windows which provide sensational views of the passing scenery.



Admire the foothills of the Himalayas aboard India's Toy Train



Journey on the Nilgiri Mountain Railway, India

**HIGH-SPEED TRAINS – CHINA**

Traverse China aboard the efficient network of high-speed trains. Offering comfortable First-Class carriages and travelling at speeds of up to 186 kilometres per hour, these trains seamlessly deliver you from one beautiful destination to the next.

**NILGIRI MOUNTAIN RAILWAY – SOUTH INDIA**

This narrow-gauge, cogwheel-driven, World Heritage-listed railway was

established by the British over a century ago and stands as one of the world's steepest rack and pinion rail systems.

**TOY TRAIN – NORTH INDIA**

Embark on a memorable journey by heritage Toy Train to Shimla, nestled at the foothills of the Himalayas. This train is famous for its 96-kilometre-long track.

**GATIMAAN EXPRESS – INDIA**

Whisking you from Delhi to Agra, the Gatimaan Express is the fastest train in India, reaching speeds of up to 160 kilometres per hour. Sit back and relax in comfort, admiring the scenic landscapes as you speed towards Agra and the remarkable Taj Mahal.



# Discovering Japan

## Tokyo to Osaka 12 Days

### INSIDER EXPERIENCES

- ☆ Journey by Limited Express train to Hakone
- ☆ Visit the Mount Fuji Visitor Centre and travel to Mount Fuji's Fifth Station, where you can see the icon's snow-capped peak
- ☆ Tour a miso factory and discover how this essential staple in Japanese cuisine is produced in Matsumoto
- ☆ Travel by Shinkansen bullet train from Takayama to Hiroshima
- ☆ Admire Itsukushima Shrine and the torii gate on Miyajima Island
- ☆ Travel by bullet train to Kyoto
- ☆ Watch for geiko and maiko in Kyoto's famous Gion district
- ☆ In Kyoto, indulge in a traditional Japanese dinner
- ☆ Enjoy a traditional Japanese tea ceremony
- ☆ Sample three Japanese teas during a tea tasting experience

### HIGHLIGHTS & INCLUSIONS

- ✓ Operated by Travelmarvel's partner Great Rail Journeys
- ✓ 11 nights in premium accommodation
- ✓ Services of a Great Rail Journeys Tour Escort
- ✓ 15 meals – 11 breakfasts (B) and 4 dinners (D)
- ✓ Airport transfers and tipping
- ✓ Learn about the destruction unleashed at Hiroshima
- ✓ Take guided tours of Tokyo and Kyoto and discover fascinating culture and charming temples
- ✓ Explore Matsumoto Castle and Osaka's lively Dotonburi District

**Day 1. Arrive Tokyo** Welcome to Tokyo. Transfer to your hotel, where a Welcome Dinner gives you the chance to meet your fellow travellers and Great Rail Journeys Tour Escort. **Two Nights:** Tokyo, Keio Plaza Hotel. D

**Day 2. Tokyo** A full-day tour of Tokyo begins with a trip to Hamarikyu Garden. Next, it's on to the Asakusa Kannon Temple Sensoji. Afterwards, pay a visit to the Meiji Shrine and the famous Shibuya Crossing before returning to your hotel for an evening at leisure. B

**Day 3. Tokyo, Hakone** ☆ Today, make the journey to Odawara by train, travelling on a Limited Express train on the picturesque narrow-gauge line. Continue to Owakudani volcanic valley and explore its active sulphur vents and hot springs on a tour before taking a ride on the Hakone Ropeway to Togendai station, nestled on the shores of the tranquil Lake Ashi. Enjoy a relaxing cruise around the lake before continuing to your hotel for the evening. **Stay:** Hakone Hotel. BD

**Day 4. Hakone, Matsumoto** ☆ This morning, travel to Mount Fuji, Japan's most distinctive landmark. Driving along the foot of the famous mountain, disembark at the Mount Fuji Visitor Centre to learn more about the country's tallest volcano. Continue to Mount Fuji's Fifth Station where, if the sun is shining, you will be able to see the snow-capped peak. Later, travel to Matsumoto to spend the rest of the day at leisure. **Stay:** Matsumoto, Hotel Buena Vista. B

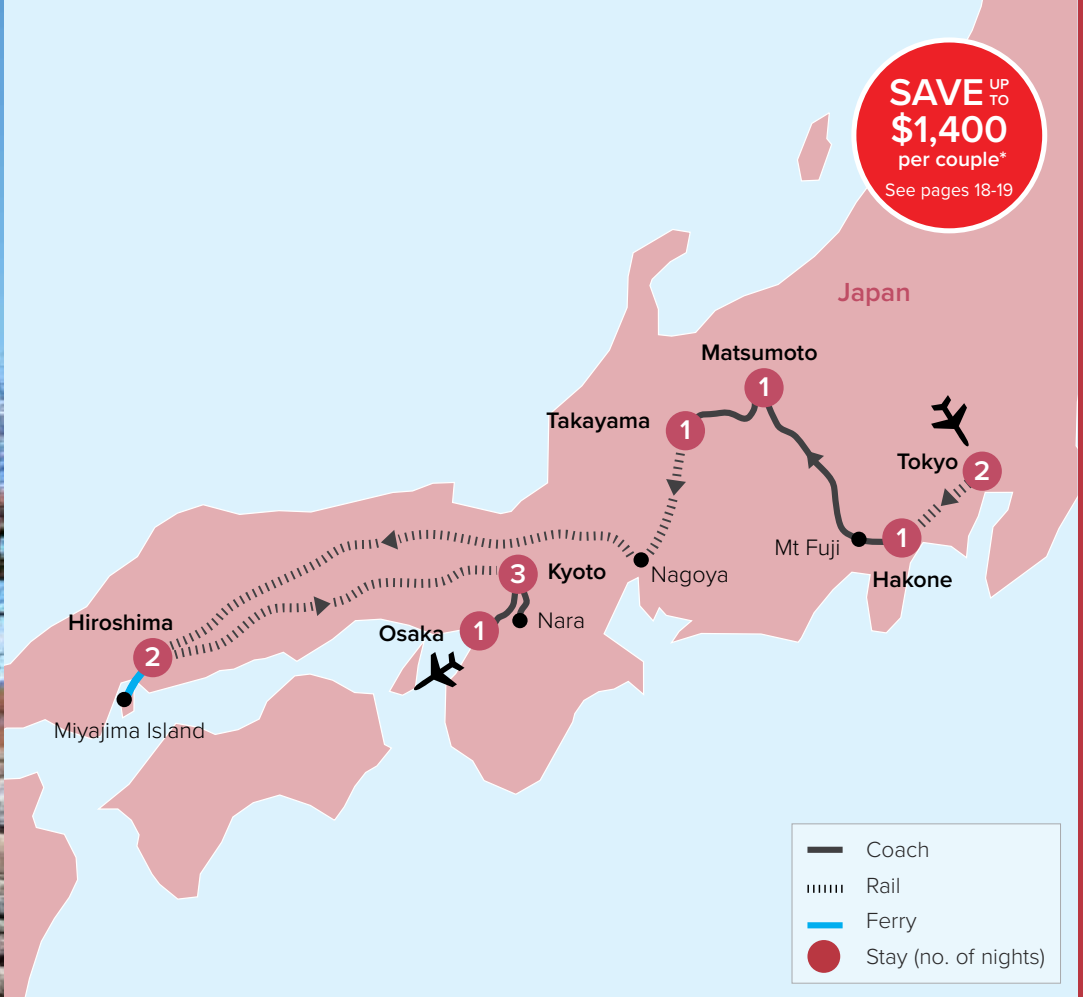
**Day 5. Matsumoto, Takayama** ☆ Visit a miso factory to find out how this Japanese staple is made. Afterwards, venture to Matsumoto Castle, a five-storey fortress. En route to Takayama, visit Hida Folk Village, a beautiful open-air museum of historic farmhouses. Arrive in Takayama. **Stay:** Hotel Associa Takayama Resort. B

**Day 6. Takayama, Nagoya, Hiroshima** ☆ This morning, join a guided walking tour to see sights including Miyagawa Morning Market,





SAVE UP TO \$1,400 per couple\* See pages 18-19



with its array of stalls selling local farm products and handicrafts. Continue to Takayama Jinya and stroll Sannomachi Street. Later, set off on a journey on the Hida Train to Nagoya, continuing by bullet train to Hiroshima.

Two Nights:  
Hotel Granvia Hiroshima. B

**Day 7. Hiroshima, Miyajima Island ☆**  
Today, travel by train and ferry to Miyajima Island. Translated as 'Shrine Island', the wooded island is home to the famous Itsukushima Shrine. During your time here, enjoy a walking tour and see cheeky wild deer. Enjoy free time to discover more before returning to Hiroshima. B

**Day 8. Hiroshima, Kyoto ☆**  
This morning, visit Hiroshima Peace Memorial Park and the A-Bomb Dome Museum. Afterwards, travel by bullet train to Kyoto. Here, indulge in a traditional Japanese dinner at a local restaurant, renowned for using delicious and fresh produce. Later, wander the streets of the famous Gion district and keep watch for one of the many beautiful geiko and maiko. Three Nights: Righa Royal Hotel Kyoto. BD

**Day 9. Kyoto ☆**  
Venture to some of Kyoto's beautiful formal gardens to savour a traditional tea ceremony this morning. Afterwards, take a tour

of Kyoto's most famous landmarks including Kinkakuji Temple (Golden Pavilion), Kyoto Railway Museum, and Kiyomizu Temple. The rest of the afternoon is yours to spend at leisure in Kyoto. B

**Day 10. Kyoto, Nara ☆**  
Today, enjoy a day trip to Nara. See Todai-ji Temple and its Great Buddha, and Nigatsu-do Shrine. Later, stroll through Nara's famous Deer Park, home to over 1,200 wild deer that freely roam the park, grazing on the spacious lawns. En route to Kyoto, take part in a fascinating tea tasting where you will try three different types of Japanese tea. B

**Day 11. Kyoto, Osaka** After a visit to Arashiyama Bamboo Grove, continue on to Osaka and visit the Umeda Observatory in the iconic Umeda Sky building. Afterwards, visit the lively Dotonbori District. Celebrate your final evening with a memorable Farewell Dinner. Stay: Sheraton Miyako Hotel Osaka. BD

**Day 12. Depart Osaka** Transfer to Kansai International Airport after breakfast for your onward flight. B



Hiroshima Peace Memorial, Japan

## From \$9,995 per person, twin share

### 12 Days – Tokyo to Osaka (RJTJAG12)

2025 Dates and Prices (A\$) Per person, twin share	Best Price From*	Standard Price From
Mar. 16	\$10,495	\$10,995
Mar. 23, 25, 30; Apr. 6	\$10,595	\$11,095
Apr. 13; May 4	\$10,495	\$10,995
May 25	\$10,195	\$10,695
Sep. 7, 21	\$9,995	\$10,695
Oct. 5, 12, 19, 26	\$10,395	\$11,095

\*Best Price – Includes Earlybird Savings and Early Payment Discount, for full terms and conditions see pages 18-19.

Solo travellers add on from \$4,000, please enquire for details.

### Trip Notes

#### Mobility Rating Level 2: Everyday Traveller.

Cherry Blossom season in Japan usually lasts from late March to May, however due to changeable weather, blooms cannot be guaranteed, even during spring months.

Prices listed are indicative and may not be available on all departure dates listed. Prices are seasonal and subject to change. An overnight bag will be needed for certain journeys. See terms and conditions towards the back of the brochure.

For a detailed day-by-day itinerary, up-to-date prices, savings and departure dates, Search **RJTJAG12** on [travelmarvel.com.au](http://travelmarvel.com.au)



# Grand Tour of Japan

## Sapporo to Fukuoka 14 Days

### INSIDER EXPERIENCES

- ☆ In Sapporo, explore Ayoma Villa and learn about the herring fishing trade
- ☆ Journey to Hakodate on the Super Hokuto Limited Express train
- ☆ Experience dinner in a local beer hall in Hakodate
- ☆ Travel by Shinkansen bullet train and scenic railways across Japan
- ☆ Visit the Mount Fuji World Heritage Centre
- ☆ Step inside a miso factory and discover how this essential ingredient in Japanese cuisine is produced in Matsumoto
- ☆ Take part in a traditional tea ceremony in Kyoto
- ☆ Spend time on Miyajima Island and admire the enchanting red torii gate
- ☆ Admire the displays at the Kyushu National Museum in Fukuoka

### HIGHLIGHTS & INCLUSIONS

- ✓ 13 nights in premium accommodation
- ✓ Services of a Great Rail Journeys Tour Escort
- ✓ 17 meals – 13 breakfasts (B) and 4 dinners (D)
- ✓ Airport transfers and tipping

**Day 1. Arrive Sapporo** Arrive in Sapporo and transfer to your hotel. This evening, enjoy a Welcome Dinner with your fellow travellers and Great Rail Journeys Tour Escort. **Two Nights:** Keio Plaza Sapporo. D

**Day 2. Sapporo** ☆ Discover the delights of Otaru, a charming port city in Hokkaido. Visit the fascinating Music Box Museum before heading to explore Ayoma Villa. **Learn about the herring fishing trade, the great wealth one family gained and admire the stunning villa.** Later, head back to Sapporo and enjoy an evening at leisure. B

**Day 3. Sapporo, Hakodate** ☆ Travel to Hakodate on the Super Hokuto Limited Express Train. This afternoon, take a sightseeing tour by coach, which includes Goryokaku fortress. Later, ascend Mount Hakodate by ropeway for fabulous views. **Tonight, savour local specialties during dinner at a local beer hall.** **Stay:** La Vista Hakodate Bay. BD

**Day 4. Hakodate, Tokyo** ☆ Explore the vivid array of stalls at Hakodate's fish market, where fresh produce is bought and sold in a lively atmosphere. **After your visit, travel to Tokyo by bullet train.**

**Two Nights:** Tokyo, Keio Plaza Hotel. B

**Day 5. Tokyo** A full-day sightseeing tour of Tokyo awaits. Visit the Imperial Palace Plaza. Explore Asakusa with its Sensoji Temple and take in the energy of the famous Shibuya Crossing, the busiest intersection on the planet. B

**Day 6. Tokyo, Hakone** ☆ Travel by Limited Express train to Hakone. Enjoy a scenic ride on the Hakone Ropeway over the Owakudani Valley and Lake Ashi, as well as a boat cruise across the serene lake. Continue on to your hotel in Hakone. **Stay:** The Prince Hakone Lake Ashinoko. BD



Discover the 'floating' torii gate at Miyajima Island, Japan



**SAVE UP TO \$1,400 per couple\***  
See pages 18-19

**Day 7. Hakone, Matsumoto** ☆

Visit the Mount Fuji World Heritage Centre, where you will learn more about Japan's most famous natural icon. Later, stop at the Chihiro Art Museum Azumino en route to Matsumoto.

Stay: Matsumoto Hotel Kagetsu. B

**Day 8. Matsumoto, Takayama** ☆

This morning, visit a miso factory and Matsumoto Castle. Discover Hida Folk Village, an open-air museum of rustic farm dwellings. Then, continue to your hotel in Takayama.

Stay: Hotel Associa Takayama Resort. B

**Day 9. Takayama, Nagoya, Kyoto** ☆

Explore Takayama and admire its ancient architecture on a guided tour before travelling to Kyoto by bullet train.

Two Nights: Kyoto, Righa Royal. B

**Day 10. Kyoto** ☆

See the highlights of Kyoto today. Embark on a tour beginning at the Kyoto Railway Museum before visiting the iconic Kinkakuji Temple. Stroll through the tranquil Sagano Bamboo Forest. **After taking part in a traditional tea ceremony,** finish the day with a stroll around the Gion area. B

**Day 11. Kyoto, Nara, Hiroshima** ☆

Today, you'll explore Nara. Take in the Todai-ji Temple and continue to beautiful Nara Park before transferring to Osaka, where you'll catch a bullet train to Hiroshima.

Two Nights: Sheraton Grand Hiroshima Hotel. B

**Day 12. Hiroshima, Miyajima Island** ☆

A guided tour today takes you around Hiroshima, to uncover the city's tragic devastation during World War II. Discover Miyajima Island and its famous red Shinto shrine, a World Heritage site. B

**Day 13. Hiroshima, Fukuoka** ☆

After breakfast, journey to Hakata by bullet train. Take in the Dazaifu Tenman-gu Shrine and visit the Kyushu National Museum. This evening, savour a Farewell Dinner at a local restaurant.

Stay: Fukuoka, New Otani Hotel Hakata. BD

**Day 14. Depart Fukuoka**

Transfer to Fukuoka airport this morning after breakfast. B



See the bright lights of Shibuya, Japan

From **\$11,995** per person, twin share

**14 Days – Sapporo to Fukuoka (RJTJTG14)**

2025 Dates and Prices (A\$) Per person, twin share	Best Price From*	Standard Price From
Mar. 25; Apr. 8	\$12,195	\$12,695
Sep. 16; Oct 7	\$11,995	\$12,695

\*Best Price – Includes Earlybird Savings and Early Payment Discount, for full terms and conditions see pages 18-19.

Solo travellers add on from \$4,100, please enquire for details.

**Trip Notes**

**Mobility Rating Level 3: Comfortable Explorer.**

🌸 Cherry Blossom season in Japan usually lasts from late March to May, however due to changeable weather, blooms cannot be guaranteed, even during spring months.

Itinerary operated by Great Rail Journeys. Prices listed are indicative and may not be available on all departure dates listed. Prices are seasonal and subject to change. An overnight bag will be needed for certain journeys. See terms and conditions towards the back of the brochure.

For a detailed day-by-day itinerary, up-to-date prices, savings and departure dates, Search **RJTJTG14** on [travelmarvel.com.au](http://travelmarvel.com.au)



# India's Golden Triangle, Tigers & Shimla

Delhi Return 13 Days

## INSIDER EXPERIENCES

- ☆ Ride the legendary Toy Train to Shimla, nestled in the foothills of the Himalayas
- ☆ Listen to an informative talk from author, historian and journalist Raaja Bhasin in Shimla
- ☆ Take a rickshaw ride through the narrow streets of Delhi
- ☆ Be in awe of the beauty of the iconic Taj Mahal
- ☆ Indulge in a traditional lunch of Rajasthani cuisine in Bharatpur
- ☆ Listen to a local naturalist talk about Ranthambore National Park
- ☆ Witness an evening Aarti, a Hindu fire ritual
- ☆ Explore the Pink City of Jaipur in a pink tuk tuk
- ☆ Discover Amber Fort and its fascinating history in Rajasthan

## HIGHLIGHTS & INCLUSIONS

- ✓ 12 nights in premium accommodation
- ✓ Services of a Great Rail Journeys Tour Escort
- ✓ 30 meals – 12 breakfasts (B), 6 lunches (L) and 12 dinners (D)
- ✓ Airport transfers and tipping
- ✓ Search for the elusive tiger in Ranthambore National Park

**Day 1. Arrive Delhi** On arrival in Delhi, you'll be met and transferred to your hotel. Tonight, get to know your Great Rail Journeys Tour Escort and fellow travellers during a Welcome Dinner.  
Stay: Delhi, Taj Palace. D

**Day 2. Delhi, Shimla** ☆ Take the Shatabdi Express to Kalka. From here, you'll board the World Heritage-listed Toy Train and travel to Shimla, embarking on one of the country's most idyllic train journeys and arriving by early evening.  
Three Nights: Shimla, The Oberoi Cecil Hotel. BLD

**Day 3. Shimla** ☆ Enjoy a talk from author, historian and journalist Raaja Bhasin before embarking on a guided sightseeing tour of Shimla. See a number of sights including the Viceregal Lodge, once the summer residence of the Indian viceroys. Continue on to the Sankat Mochan Temple. BLD

**Day 4. Shimla** Nestled at the foothills of the Himalayas and surrounded by picturesque natural scenery, Shimla is a delight to visit and was a favourite with the Sahibs from the time of the Raj. Make the most of your free day in this charming town as you discover it further on your own. Perhaps explore the Himalayas outside Shimla and visit Wildflower Hall. BD

**Day 5. Shimla, Delhi** After breakfast this morning, travel from Shimla to Chandigarh by road before boarding the express train back to Delhi. Upon arrival, transfer back to your hotel.  
Two Nights: Delhi, Taj Palace. BLD

**Day 6. Delhi** ☆ Today, explore Delhi. Visit Jama Masjid, a 17th-century mosque, and one of India's largest. Sit back and enjoy a rickshaw ride through the narrow streets of Old Delhi's lively Chandni Chowk bazaar. Embark on a sightseeing tour of New Delhi and see India Gate.



Board the World Heritage-listed Toy Train to Shimla, India



After a visit to the opulent 16th-century tomb of Mughal emperor Humayun, conclude your tour at the Gandhi Smriti Museum. Learn about the inspiring life of Mahatma Gandhi. **BD**

**Day 7. Delhi, Agra** ☆

Board the Gatimaan Express to Agra. Once in Agra, embark on a sightseeing tour of the World Heritage-listed Agra Fort. Continue to the iconic Taj Mahal. The structure took over 22 years to build and is a wonder to behold. Its glittering white marble domes almost seem to change colours throughout the day depending on the position of the sun.

Stay: Agra, Hotel Clarks Shiraz. **BD**

**Day 8. Agra, Fatehpur Sikri, Ranthambore National Park** ☆

Transfer from Agra to Ranthambore National Park, stopping en route at the abandoned ancient city of Fatehpur Sikri for a guided tour. Savour lunch at Laxmi Vilas Palace in Bharatpur. Then, jump back onto your coach for the last leg of your trip to Ranthambore National Park. Dinner tonight is at your hotel. **Two Nights:** Ranthambore Regency. **BLD**

**Day 9. Ranthambore National Park** ☆

This morning, enjoy a lecture from a local naturalist about Ranthambore National Park. After lunch, head out on a guided

game drive through the national park and search for Bengal tigers. Ranthambore is one of the best parks to view this elusive cat. Return to your hotel for dinner tonight. **BLD**

**Day 10. Ranthambore National Park, Jaipur**

After a morning ☆ game drive, return to your hotel to spend the rest of the morning at leisure. Visit Birla Temple to witness an Aarti ceremony en route to the enchanting Pink City of Jaipur. **Two Nights:** Jaipur, Taj Amer. **BLD**

**Day 11. Jaipur** ☆

Begin the day with a visit to the City Palace and the Jantar Mantar, an early 18th-century astronomical observatory. View one of Jaipur's most renowned sights, the Hawa Mahal, the 'Palace of the Winds'. After the tour, enjoy an exploration of the Pink City of Jaipur in a pink tuk tuk. The rest of the day is free to spend at leisure. **BD**

**Day 12. Jaipur, Delhi** ☆

Travel by jeep to explore Amber Fort. Transfer by coach back to Delhi. Tonight, say goodbye to your fellow travellers at a delectable Farewell Dinner. **Stay:** Delhi, Taj Palace. **BD**

**Day 13. Depart Delhi** After breakfast, you'll be transferred to the airport for your flight. **B**



See Bengal tigers in Ranthambore National Park, India

From **\$4,295** per person, twin share

**13 Days – Delhi Return (RJTLTC13)**

2025 Dates and Prices (A\$) Per person, twin share	Best Price From*	Standard Price From
Jan. 24	\$4,995	\$5,495
Feb. 14, 28	\$5,095	\$5,595
Mar. 14	\$4,995	\$5,495
Apr. 4	\$4,495	\$4,995
Sep. 12	\$4,295	\$4,995
Oct. 3, 17	\$4,795	\$5,495
Nov. 14	\$4,895	\$5,595
Nov. 28	\$4,795	\$5,495

\*Best Price – Includes Earlybird Savings and Early Payment Discount, for full terms and conditions see pages 18-19.

Solo travellers add on from \$2,300, please enquire for details.

**Trip Notes**

**Mobility Rating Level 3: Comfortable Explorer.**

Itinerary is operated by Great Rail Journeys. Prices listed are indicative and may not be available on all departure dates listed. Prices are seasonal and subject to change. An overnight bag will be needed for certain journeys. See terms and conditions towards the back of the brochure.

For a detailed day-by-day itinerary, up-to-date prices, savings and departure dates, Search **RJTLTC13** on [travelmarvel.com.au](http://travelmarvel.com.au)



# Highlights of the Golden Triangle & Mumbai

## Delhi to Mumbai 10 Days

### INSIDER EXPERIENCES

- ☆ Take a rickshaw ride through the narrow streets of Delhi's lively Chandni Chowk bazaar
- ☆ Be in awe of the beauty of the iconic Taj Mahal
- ☆ Dine on traditional Rajasthani cuisine in Bharatpur
- ☆ Go in search of Bengal tigers at Ranthambore National Park
- ☆ Explore the Pink City of Jaipur
- ☆ Discover Mumbai at dawn by foot on a walking tour

### HIGHLIGHTS & INCLUSIONS

- ✓ Nine nights in premium accommodation
- ✓ Services of a Great Rail Journeys Tour Escort
- ✓ 21 meals – 9 breakfasts (B), 3 lunches (L) and 9 dinners (D)
- ✓ Airport transfers and tipping
- ✓ Experience World Heritage sites including Amber Fort, Humayun's Tomb, Jantar Mantar, Fatehpur Sikri and Agra Fort

**Day 1. Arrive Delhi** On arrival in Delhi, you'll be met and transferred to your hotel. Tonight, get to know your Great Rail Journeys Tour Escort and fellow travellers during a Welcome Dinner. **Two Nights:** Crowne Plaza New Delhi Okhla. D

**Day 2. Delhi** ☆ Take a rickshaw ride through the narrow streets of Delhi's lively bazaar. Visit the 17th-century mosque, Jama Masjid. Travel to New Delhi to visit Humayun's Tomb, which is thought to have inspired the magnificent Taj Mahal. Explore wide leafy avenues and later, visit the Gandhi Smriti Museum to learn about Mahatma Gandhi. BD

**Day 3. Delhi, Agra** ☆ Transfer to the station, where you'll board the Gatimaan Express to Agra. Once in Agra, travel to the iconic Taj Mahal. The structure took over 22 years to build and is a wonder to behold. Its glittering

white marble domes inspire awe, and seem to change colours throughout the day depending on the position of the sun. Later, embark on a sightseeing tour of the World Heritage-listed Red Fort. One of the city's most historic sites, the fort has served as both a military site and a royal residence in the past. **Stay:** Agra, Hotel Clarks Shiraz. BD

**Day 4. Agra, Fatehpur Sikri, Ranthambore National Park** ☆ Transfer from Agra to Ranthambore National Park, stopping en route for a guided tour of the abandoned ancient city, Fatehpur Sikri. Built in the 16th century, Fatehpur is home to a number of impressive monuments and temples. **Enjoy lunch at Laxmi Vilas Palace in Bharatpur** before boarding an express train for the last leg of your trip to Ranthambore National Park. Dinner is at your hotel. **Two Nights:** Hotel Ranthambore Regency. BLD



Experience the true wonder of the Taj Mahal, Agra, India



**Day 5. Ranthambore National Park** ☆

Today, search for Bengal tigers on guided morning and afternoon game drives through Ranthambore National Park. Ranthambore is one of the best parks to view the big cat, and is also home to many more unique animals including leopards, sloth bears and striped hyenas. Enjoy an evening talk by a naturalist about the park and its diverse wildlife. BLD

**Day 6. Ranthambore National Park, Jaipur** Spend the morning at your leisure. After lunch, depart by coach to the picturesque and historic city of Jaipur, the capital of Rajasthan. Two Nights: Jaipur, Clarks Amer. BLD

**Day 7. Jaipur** ☆

This morning is dedicated to an in-depth exploration of Jaipur. Begin with a guided tour of Amber Fort. The striking architecture is a unique blend of Hindu and Islamic styles. Its exterior contrasts with its interior, which is elaborately painted and adorned with decadent mirrors and precious stones. Enjoy time at your leisure for lunch before jumping right back into your sightseeing. Explore the Pink City of Jaipur and discover why its buildings are coloured in this distinctive hue. Visit sites including the City Palace and the 18th-century Jantar Mantar

astronomical observatory, and drive by Jaipur's most distinctive landmark, Hawa Mahal, the 'Palace of the Winds'. BD

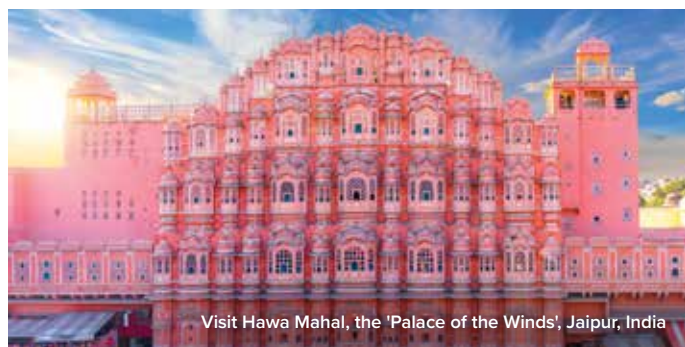
**Day 8. Jaipur, Mumbai** Transfer to the airport for your included flight to Mumbai. Travel to your hotel before observing a cooking demonstration, which introduces you to the rich and vibrant food culture of the city. Enjoy dinner at the hotel. Two Nights: Mumbai, Trident Nariman Point. BD

**Day 9. Mumbai** ☆

Rise early for a Mumbai by dawn walking tour in the beautiful morning light. Return to your hotel for breakfast and spend the rest of the morning at your leisure before taking an afternoon sightseeing tour of Mumbai icons, including the Gateway of India, Chhatrapati Shivaji Terminal, a 19th-century World Heritage-listed railway station, and the colourful Mahalaxmi Dhobi Ghat, the world's largest open-air laundry. Savour a delicious Farewell Dinner at your hotel. BD

**Day 10. Depart Mumbai**

After breakfast, your journey ends with a transfer to the airport. B



Visit Hawa Mahal, the 'Palace of the Winds', Jaipur, India

From **\$3,195** per person, twin share

**10 Days – Delhi to Mumbai (RJTG MJ10)**

2025 Dates and Prices (A\$) Per person, twin share	Best Price From*	Standard Price From
Feb. 7	\$3,795	\$4,295
Mar. 7	\$3,695	\$4,195
Sep. 12	\$3,195	\$3,895
Oct. 3, 31	\$3,495	\$4,195
Nov. 21	\$3,595	\$4,295

\*Best Price – Includes Earlybird Savings and Early Payment Discount, for full terms and conditions see pages 18-19.

Solo travellers add on from \$1,300, please enquire for details.

**Trip Notes**

**Mobility Rating Level 3: Comfortable Explorer.**

Itinerary is operated by Great Rail Journeys. Prices listed are indicative and may not be available on all departure dates listed. Prices are seasonal and subject to change. An overnight bag will be needed for certain journeys. See general information and conditions towards the back of the brochure.

For a detailed day-by-day itinerary, up-to-date prices, savings and departure dates, Search **RJTGMJ10** on [travelmarvel.com.au](http://travelmarvel.com.au)



# Discover Southern India & Kerala

## Bengaluru to Chennai 15 Days

### INSIDER EXPERIENCES

- ☆ Ride the World Heritage Nilgiri Mountain Railway, passing through the Nilgiri Mountains
- ☆ Watch a Kathakali dance performance in Kochi
- ☆ Cruise through the serene palm-lined backwaters of Kerala
- ☆ Discover an aromatic spice plantation in Thekkady
- ☆ Discover a local village inhabited by artisans in Madurai
- ☆ Explore Madurai's Meenakshi Temple

### HIGHLIGHTS & INCLUSIONS

- ✓ 14 nights in premium accommodation
- ✓ Services of a Great Rail Journeys Tour Escort
- ✓ 31 meals – 14 breakfasts (B), 4 lunches (L) and 13 dinners (D)
- ✓ Airport transfers and tipping
- ✓ Dine on regional and authentic South Indian cuisine
- ✓ Enjoy a traditional tea tasting

**Day 1. Arrive Bengaluru** Touch down in Kempegowda International Airport. Transfer to your hotel. Spend time relaxing or indulge at a spa that features a menu of anti-jetlag treatments.  
**Stay:** Bengaluru, Taj Bangalore.

**Day 2. Bengaluru, Mysuru** Meet your Great Rail Journey Tour Escort and fellow travellers and transfer by coach to Mysuru. On arrival, step out and explore the city, relax or simply settle in and unwind. Mysuru is often referred to as the cultural capital of Karnataka. Tonight, mix with fellow travellers at a Welcome Dinner.  
**Two Nights:** Mysuru, Radisson Blu Plaza Mysore. BD

**Day 3. Mysuru** Step out on a full-day guided tour, exploring the cultural icons of Mysuru such as St Philomena's Church and Mysuru Palace. Continue to Srirangapatna. Then, head to Chamundi Hills and discover the unique Nandi (Bull) statue. BD

**Day 4. Mysuru, Ooty** Journey to Ooty, short for Udhagamandalam, a hill station located in the Nilgiri Mountains. You may like to walk through the gardens or visit the local honey and bee museum.  
**Two Nights:** Fortune Sullivan Court Ooty. BD

**Day 5. Ooty** Begin your day with a visit to Ooty's popular Botanical Gardens. Continue to Doddabetta Peak. Then, after lunch at a local restaurant, visit St Stephen's Church, known for its colourful depiction of 'The Last Supper'. Stop at the local market on the way back to the hotel. BLD

**Day 6. Ooty, Coimbatore** ☆ Travel to Coonoor by local toy train. Visit a local factory to learn the process of making tea. **Step on board the World Heritage Nilgiri Mountain Railway and enjoy the scenery.** Arrive in Mettupalayam, and travel by coach to the city of Coimbatore for an overnight stay.  
**Stay:** Vivanta Coimbatore. BLD





The stunning backwaters of Kerala, India



**Day 7. Coimbatore, Kochi**

Following a morning at leisure in Coimbatore on the banks of the Noyyal River, catch the train to the captivating city of Kochi in Kerala.

**Two Nights:** Crowne Plaza Kochi. BLD

**Day 8. Kochi** ☆

Spend time discovering Fort Kochi. Head to Mattancherry Palace and admire the beautiful murals. Gain insight into the daily life of local people at the Dhobi Khana. In the evening, watch a traditional Kathakali dance performance. BD

**Day 9. Kochi, Kumarakom** ☆

Visit Kochi's Jewish synagogue and marvel at its incredible treasures before transferring to Alleppey. Board a houseboat, or kettuvallam, for a scenic cruise. Savour a delicious lunch on board. Disembark at Kumarakom for an overnight stay. Stay: Kumarakom, Coconut Lagoon. BLD

**Day 10. Kumarakom, Thekkady**

Spend time at leisure before travelling through the Western Ghats to Thekkady, home to Periyar National Park. **Two Nights:** Thekkady, Spice Village. BD

**Day 11. Thekkady** ☆

Discover an aromatic spice plantation on a guided walking tour.

In the afternoon, head to Lake Periyar for a peaceful cruise as you search for elephants and tigers. BD

**Day 12. Thekkady, Madurai** ☆

Journey to Madurai, one of the oldest cities in India, for two nights. En route, visit a village inhabited by artisans who specialise in sculpting aesthetic idols and puppets. **Two Nights:** Heritage Madurai. BD

**Day 13. Madurai** ☆

Take a guided tour of Madurai, which includes the impressive 17th-century Thirumalai Nayak Palace, the Gandhi Memorial Museum and the 12th-century Meenakshi Temple. BD

**Day 14. Madurai, Chennai**

Set off to the airport for your flight to Chennai and your overnight stay. Explore The Madras War Cemetery and Marina Beach, one of the world's longest beaches, stretching 13 kilometres. Stay: Chennai, Taj Coromandel. BD

**Day 15. Depart Chennai**

Spend time at leisure or join an optional excursion to Mamallapuram, known for its World Heritage-listed temples and monuments (own expense) before you transfer to the airport for your onward flight. B



Spices at a local market in Delhi, India

From **\$5,295** per person, twin share

**15 Days – Bengaluru to Chennai (RJTGCJ15)**

2025 Dates and Prices (A\$) Per person, twin share	Best Price From*	Standard Price From
Feb. 15	\$5,695	\$6,195
Oct. 4	\$5,495	\$6,195
Nov. 1	\$5,295	\$5,995

\*Best Price – Includes Earlybird Savings and Early Payment Discount, for full terms and conditions see pages 18-19.

Solo travellers add on from \$3,500, please enquire for details.

**Trip Notes**

**Mobility Rating Level 3: Comfortable Explorer.**

Itinerary is operated by Great Rail Journeys. Prices listed are indicative and may not be available on all departure dates listed. Prices are seasonal and subject to change. An overnight bag will be needed for certain journeys. Flights should arrive at Bengaluru before 4.00pm. See general information and conditions towards the back of the brochure.

For a detailed day-by-day itinerary, up-to-date prices, savings and departure dates, Search **RJTGCJ15** on [travelmarvel.com.au](http://travelmarvel.com.au)



# Discover China

## Beijing to Shanghai 14 Days

### INSIDER EXPERIENCES

- ☆ Discover China's greatest icon, the Great Wall of China
- ☆ Sample Beijing's most iconic dish, Peking Duck
- ☆ Board a high-speed train headed for Xi'an
- ☆ Feast on a traditional Chinese dumpling banquet
- ☆ Embark on a high-speed train journey to Chengdu
- ☆ See the giant pandas at the Chengdu Research Base of Giant Panda Breeding
- ☆ Visit a teahouse in People's Park in Chengdu
- ☆ Enjoy a Farewell Dinner while cruising the Huangpu River

### HIGHLIGHTS & INCLUSIONS

- ✓ 10 nights in premium accommodation
- ✓ Services of a Great Rail Journeys Tour Escort
- ✓ Three-night Yangtze River cruise on the Victoria Jenna
- ✓ 31 meals – 13 breakfasts (B), 10 lunches (L) and 8 dinners (D)
- ✓ Airport transfers and tipping
- ✓ Be in awe of the Terracotta Army in Xi'an
- ✓ Discover the wonders of Beijing including the Forbidden City and the Temple of Heaven

**Day 1. Arrive Beijing** Be met at the airport and transferred to your hotel. This evening, savour a Welcome Dinner and meet your Great Rail Journeys Tour Escort and fellow travellers.  
Three Nights: Beijing, Novotel Peace Hotel. D

**Day 2. Beijing** Set off for a full day of exploration. Visit Tiananmen Square. Continue to the Forbidden City. Discover ornate grand halls, breathtaking architecture and beautiful gardens. Later, marvel at the World Heritage-listed Temple of Heaven. BL

**Day 3. Beijing, Great Wall of China** ☆ Discover China's greatest icon, the Great Wall of China. Take in breathtaking views during a cable car ride to the Mutianyu section. Later, visit a cloisonne factory. This evening, sample Beijing's most iconic dish with a delicious banquet of Peking Duck at a local restaurant. BLD

**Day 4. Beijing, Xi'an** ☆ This morning, board a high-speed train headed for Xi'an. Enjoy the comforts of First-Class modern

carriages as you take in the views of Eastern China while travelling at speeds of up to 186km per hour. Arrive in Xi'an, the eastern point of the ancient Silk Road. The remainder of the day is at your leisure.

Two Nights: Xi'an, Grand Mercure Renmin Square. B

**Day 5. Xi'an** ☆ Known for its remarkable collection of Terracotta Warriors, a discovery of Xi'an awaits. Spend the afternoon on a guided tour of Xi'an, taking in some of its most famous sights. Tonight, indulge in a traditional Chinese dumpling banquet. BLD

**Day 6. Xi'an, Chengdu** ☆ Travel through the countryside on a high-speed train to Chengdu. On arrival, be transferred to your hotel. Gather this evening to embrace the flavours of Sichuan. Two Nights: Chengdu, Tibet Hotel. BLD

**Day 7. Chengdu** ☆ See the giant pandas this morning at the Chengdu Research Base of Giant Panda Breeding, then enjoy lunch at a local restaurant. Visit the Buddhist Wenshu



Admire the Terracotta Warriors in Xi'an, China



Monastery and learn about the ancient structure. Later, visit charming Jinli Street, where bright lanterns light up the path. Traditional crafts, food vendors and market stalls provide a sensory treat of cultural delights. **BL**

**Day 8. Chengdu, Chongqing, Embark Ship ☆**

Visit a teahouse in People's Park before travelling by train to Chongqing, where you will savour dinner at a local restaurant. Later, board your river ship for a three-night cruise along the Yangtze River.

Three Nights: Yangtze River, Victoria Jenna. **BLD**

**Day 9. Scenic Cruising, Fengdu Ghost City ☆**

Enjoy a shore excursion to Shuanggui Hill National Forest Park before returning to your ship for lunch. Afterwards, you may choose an optional excursion to Fengdu Ghost City (own expense). Back on board the vessel, enjoy taking part in a variety of cultural activities before dinner. **BLD**

**Day 10. Scenic Cruising, Shennong Stream**

Immerse yourself in the region's stunning gorges. This morning's optional excursion (own expense) is to the White Emperor City. Sail through the Qutang and Wu Gorges, two of the famous Three Gorges, both renowned for their picture-perfect scenery. In the afternoon, join a sailing excursion along the Shennong Stream. Meander

through emerald waters. This picturesque tributary cuts through the ancestral lands of the Tujia people. Following the Captain's Farewell Dinner, enjoy an onboard cabaret show. **BLD**

**Day 11. Disembark Ship, Yichang, Shanghai**

Bid farewell to your river ship and disembark at Maoping Pier. Spend the morning at the Three Gorges Dam and take in the colossal scale of the world's largest hydropower project. After lunch, transfer to Yichang airport for your flight to Shanghai.

Three Nights: Shanghai, Grand Central Hotel. **BL**

**Day 12. Shanghai**

Journey to Suzhou this morning. Visit the Master of the Nets Garden. After lunch, visit the city's 100-year-old Silk Mill. Transfer to Pingjiang Road for a scenic canal cruise before returning to Shanghai. **BL**

**Day 13. Shanghai ☆**

This morning, explore the beautiful Yu Garden. Experience Shanghai's bustling bazaar before visiting the historic Jade Buddha Temple. This evening, savour a special Farewell Dinner while cruising the scenic Huangpu River. **BD**

**Day 14. Depart Shanghai**

After breakfast, be transferred to Shanghai airport for your onward flight. **B**



Three Gorges, Yangtze River, China

From **\$6,995** per person, twin share

14 Days – Beijing to Shanghai (RJTCYG14)		
2025 Dates and Prices (A\$) Per person, twin share	Best Price From*	Standard Price From
Mar. 31; Apr. 7, 14	\$7,195	\$7,695
May 5, 19, 26	\$7,295	\$7,795
Jun. 9; Aug. 25; Sep. 8, 15; Oct. 6	\$7,095	\$7,795
Oct. 13, 20, 27; Nov. 3	\$6,995	\$7,695

\*Best Price – Includes Earlybird Savings and Early Payment Discount, for full terms and conditions see pages 18-19. Solo travellers add on from \$2,600, please enquire for details.

**Trip Notes**

**Mobility Rating Level 3: Comfortable Explorer.** Itinerary is operated by Great Rail Journeys. Prices listed are indicative and may not be available on all departure dates listed. Prices are seasonal and subject to change. Price based on Superior Cabin. Pre-selection and cabin upgrades are not available on your Yangtze River cruise. Low or highwater levels may cause disruption to cruise. See general information and conditions towards the back of the brochure.

For a detailed day-by-day itinerary, up-to-date prices, savings and departure dates, Search **RJTCYG14** on [travelmarvel.com.au](http://travelmarvel.com.au)

Enjoy breathtaking views from the California Zephyr sleeper train, Utah





# Discover the USA

Follow a route, rich in history, that traverses vast plains from east to west, embracing the country's incredible cities and scenery

Travelmarvel's escorted rail holidays through the USA allow you to journey through incredible landscapes and discover the heritage of railways in the region.

## ICONIC CITIES

The Statue of Liberty, Central Park, Times Square and the Empire State Building – New York City's iconic sights are in abundance. Las Vegas is a spectacle to behold. Add Denver, Chicago and San Francisco, and you'll discover that USA's cities each have their own appeal.

## STUNNING SCENERY

Be whisked through the diverse terrain that makes up this breathtaking country. Whether you're following the tracks of the San Joaquin route through California's spectacular Central Valley mountain ranges or travelling on the historic Durango and Silverton Narrow Gauge Railroad, the train provides the ideal viewpoint.

## NATURAL WONDERS

Between the east and west, the USA holds dramatic wonders awaiting exploration. Experience the exhilarating moment of standing on the rim of the Grand Canyon. The canyon is a breathtaking testament to the power of nature and the forces of creation. The sandstone formations in Utah's Monument Valley are equally impressive, as are the thunderous Niagara Falls in New York state.

## FROM COAST TO COAST

Rail travel has long been an ideal mode of transport thanks to its efficiency and speed. The world's first Transcontinental Railroad, linking the east and west of North America, opened the country to business and leisure-related travel in a way that had never before been seen. Now, travellers from all over the globe find comfort and ease in the romance of rail travel and completing a holiday aboard steel wheels has become one of the most sought-after ways to travel. From crossing vast tracts of wild terrain in the Mojave Desert, Yosemite National Park, Colorado, Arizona, Nevada and California in the west, to the modern metropolises of Chicago and New York City in the east, the distance between North America's spectacular locations is easily accessible by rail.

## THE MUSICAL SOUTH

From the bright lights of Nashville, to the vibrant festivals in New Orleans and the checkered past of the Deep South, the southern states have an abundance of stories to tell. Discover the origins of the Blues music movement along the rail route from Memphis to New Orleans. And dive into your own journey of bygone days in Tennessee, Louisiana and Georgia.



# USA'S ICONIC *Trains & Railways*

RIDE THE RAILS ACROSS THE 'LAND OF THE FREE AND THE HOME OF THE BRAVE'  
ON A MIX OF MODERN AMTRAK TRAINS AND HERITAGE HEROES



Starlight Train & Amtrak Surfliner Train

The California Zephyr zips through seven states, following the route of the original wagon trains, while further trains and railways in the USA provide a tangible link to the nation's past and present traditions.

### AMTRAK

Amtrak's vast railway network covers almost every state on the USA mainland. These fast and reliable trains are designed for longer journeys, and relaxing on board is one of the best ways to see the country. Trains feature roomettes with two berths (upper and lower) and comfortable seating, which converts to a bed in the evening. All roomettes have shared bathroom facilities, with limited upgrades to bedrooms with private shower and toilet facilities available. Enjoy overnight stays with Amtrak to fully maximise your USA rail experience.

These include a night on board the California Zephyr, travelling from Grand Junction to Chicago. Hugging rocky mountains as it carves across the land, this sleeper train is a serene way to spend an evening aboard. And from one major transport hub to the next, the locomotive opens gateways to a host of interesting discoveries and insights along truly spectacular railroads. Your expedition also brings you aboard the Lake Shore Limited for a journey through the night to Buffalo, on the cusp of Niagara Falls. Other notable daytime Amtrak services include the Maple Leaf, which



Durango and Silverton Railway, Colorado



Durango and Silverton Railway, Colorado



California Zephyr arriving at Glenwood Springs, Colorado

transports you from Niagara Falls to New York, as well as California's San Joaquin rail route from San Francisco travelling south to Bakersfield. To enhance your rail adventure, panoramic windows provide expansive views of the passing scenery, maximising your onboard experience.

#### **GRAND CANYON RAILWAY**

The historic Grand Canyon Railway carries hundreds of passengers each day between Williams in Arizona and the South Rim of the Grand Canyon. The journey of more than 100 kilometres was first undertaken by rail in 1901 — an unimaginable feat for the time. On board,

train enthusiasts can be transported to this bygone era during a mock train robbery during the return journey. And you'll also marvel at sweeping views along the way.

#### **DURANGO AND SILVERTON NARROW GAUGE RAILROAD**

Established in the early 1880s, this railway was initially created to enable travellers to carry silver and gold ore between mountains. Soon after, the dramatic surrounds and breathtaking sights became just as valuable. Colorado's Durango and Silverton Railroad is a narrow-gauge railway that operates a historic train with rolling

stock designed for the 70-kilometre line. The locomotives are 1923-25 vintage, coal-fired and steam-operated. Open gondola cars provide panoramic views of the stunning surrounding mountains.

#### **GRAND JUNCTION**

Set off from western Colorado and navigate scenic canyons and valleys before ascending high into the Rockies to Denver on America's most idyllic rail route. From there, the California Zephyr descends into the plains of Nebraska then whistles its way across Iowa, the mighty Mississippi and the pretty prairies of Illinois all the way to Chicago.



# Grand Tour of America

## San Francisco to New York City 17 Days

### INSIDER EXPERIENCES

- ☆ Visit Alcatraz Island in San Francisco
- ☆ Admire the scenery as you journey on the San Joaquin route
- ☆ Travel on the incredible Grand Canyon Railway
- ☆ Journey on the Durango and Silverton Railroad

### HIGHLIGHTS & INCLUSIONS

- ✓ 14 nights in premium accommodation
- ✓ Two overnight train journeys in a two-berth roomette
- ✓ Services of a Great Rail Journeys Tour Escort and expert local guides
- ✓ Airport transfers and tipping
- ✓ Visit Hoover Dam on the border of Nevada and Arizona
- ✓ Explore the vibrant landscapes of Yosemite National Park
- ✓ Relax on board the overnight California Zephyr train
- ✓ Enjoy an overnight journey on the Lake Shore Limited
- ✓ Take a behind-the-scenes tour of Grand Central Station
- ✓ Uncover the treasures of the Big Apple on a sightseeing tour

**Day 1. Arrive San Francisco** Your rail journey across the USA begins today in San Francisco. On arrival at the airport, you will be met and transferred to your hotel.  
**Two Nights:** San Francisco, Hyatt Centric Fisherman's Wharf.

**Day 2. San Francisco** ☆  
Enjoy a discovery of San Francisco and stop at the famous Golden Gate Bridge. At Fisherman's Wharf, meet the resident sea lion community. Later, visit the infamous Alcatraz Island, a former penitentiary that housed criminals such as Al Capone.

**Day 3. San Francisco, Yosemite National Park** ☆  
Journey by train on the San Joaquin route through California's Central Valley, which is bordered by Yosemite National Park. At Merced, board a coach to Yosemite National Park and take in views of Half Dome, El Capitan and Bridalveil Fall. Afterwards, head back to Merced to spend the night.  
**Stay:** Merced, El Capitan Hotel.

**Day 4. Las Vegas** ☆  
Continue your journey on the

San Joaquin route southwards today and admire the breathtaking natural landscapes including the Sierra Nevada mountain range and Yosemite National Park. Arriving in Bakersfield, you'll transfer by coach across the Mojave Desert to Las Vegas in the state of Nevada.  
**Two Nights:** Las Vegas, Planet Hollywood Resort and Casino.

**Day 5. Las Vegas** Explore some of the incredible sights of Las Vegas at leisure today. Delight in an extraordinary selection of entertainment choices to discover on your doorstep.

**Day 6. Las Vegas, Hoover Dam, Flagstaff** ☆  
Head across Nevada to Arizona, via the Hoover Dam. Enter Arizona and drive the legendary Route 66, arriving in Flagstaff for a two-night stay amid 500 acres of ponderosa pine forest.  
**Two Nights:** Flagstaff, Little America Hotel.

**Day 7. Grand Canyon** ☆  
Travel in vintage carriages hauled by historic locomotives on the Grand Canyon Railway.





See the sunset over Monument Valley, Arizona



— Coach  
 ..... Rail  
 ● Stay (no. of nights)  
 ● Stay (no. of nights on train)

Created by the Colorado River over six million years, the Grand Canyon is up to 29 kilometres wide. Arrive at the South Rim, the main viewpoint of the canyon.

**Day 8. Flagstaff, Monument Valley, Durango** After breakfast, drive through Navajo country and Utah's Monument Valley. The region evokes a bygone era, where cowboys herded cattle across hills and Native Americans performed rituals passed down through generations.  
 Stay: Durango, Best Western Plus.

**Day 9. Durango and Silverton Railroad** ☆  
 Travel on the Durango and Silverton Railroad for a journey across the remote wilderness of the National Forest. Travel through canyons and past green rivers to Silverton.  
 Stay: Grand Junction, Hampton Inn.

**Day 10. California Zephyr** Board your overnight train to Chicago and journey high up into the Rockies and across the plains.  
 Stay: California Zephyr sleeper train.

**Day 11. Chicago** Arrive in Chicago this afternoon with plenty of time to relish an evening at leisure in this dynamic city.  
 Two Nights: Chicago, Hampton Inn Magnificent Mile.

**Day 12. Chicago** Embark on a Chicago Architecture Cruise, seeing some of the city's greatest buildings. Then, stroll through Millennium Park or head to one of the city's many museums and superb art galleries.

**Day 13. Chicago**  
 You are free to explore Chicago further today. This evening, board the Lake Shore Limited for the overnight journey to Buffalo.  
 Stay: Amtrak Lake Shore Limited sleeper train.

**Day 14. Niagara Falls** Arrive in Buffalo and transfer to Niagara Falls. Perhaps explore the Falls from the water on a river tour (own expense).  
 Stay: Hyatt Place Niagara Falls.

**Day 15. Niagara Falls, New York City** Today, board the Maple Leaf service to New York City for a day-long train journey. On arrival, you'll enjoy a behind-the-scenes tour of Grand Central Station.  
 Two Nights: New York Marriott Marquis, Times Square.

**Day 16. New York City** Join a guided tour and harbour cruise around Manhattan and see the Statue of Liberty.

**Day 17. Depart New York City**  
 Transfer to the airport for your return flight.



Golden Gate Bridge, San Francisco

## From \$12,295 per person, twin share

### 17 Days – San Francisco to New York City (RJTSUG17)

2025 Dates and Prices (A\$) per person, twin share	Best Price From*	Standard Price From
Apr. 21	\$12,395	\$12,895
May 12	\$12,495	\$12,995
Jun. 16	\$12,495	\$13,195
Sep. 1	\$12,295	\$12,995

\*Best Price – Includes Earlybird Savings and Early Payment Discount, for full terms and conditions see pages 18-19.

Solo travellers add on from \$6,700, please enquire for details.

### Amtrak Sleeper Train Upgrade

Twin Share prices are based on a Standard Roomette. Upgrade to a bedroom with private facilities. Enquire for pricing.

### Trip Notes

#### Mobility Rating Level 2: Everyday Traveller.

Porterage is not included. The overnight train journeys on Amtrak are based on shared bathroom facilities. Hotels are subject to change and will be confirmed in documentation. No meals are included in this tour. See terms and conditions towards the back of the brochure.

For a detailed day-by-day itinerary, up-to-date prices, savings and departure dates, search **RJTSUG17** on [travelmarvel.com.au](http://travelmarvel.com.au)



# Tracks of the Deep South

## Charlotte to New Orleans 13 Days

### INSIDER EXPERIENCE

- ☆ Take Amtrak's City of New Orleans service to Hammond

### HIGHLIGHTS & INCLUSIONS

- ✓ 12 nights in premium hotel accommodation
- ✓ Services of a Great Rail Journeys Tour Escort and expert local guides
- ✓ Airport transfers and tipping
- ✓ Visit the world's largest music museum at the Country Music Hall of Fame in Nashville
- ✓ In Memphis, see the iconic Sun Studios, where Elvis Presley, Jerry Lee Lewis and Johnny Cash recorded many hit songs
- ✓ Tour Louisiana's Oak Alley Plantation for a compelling experience
- ✓ Explore the life of Elvis Presley and visit Graceland
- ✓ Join a cruise along the Mississippi River accompanied by a local historian

**Day 1. Arrive Charlotte** Your journey through America's Deep South begins today on arrival in the city of Charlotte. Here, you'll be met and transferred to your city centre hotel. Enjoy a fantastic range of restaurants to choose from when you head out for dinner this evening.  
**Stay:** Charlotte, Courtyard Charlotte City Centre.

**Day 2. Charlotte, Gatlinburg** Travel by coach to Gatlinburg, Tennessee with a stopover in Asheville, in the beautiful Blue Ridge Mountains. Visit Biltmore Estate and indulge in a buffet lunch at the Stable Café before a self-guided tour of this grand, historic estate. Continue to Gatlinburg. Check in to your hotel and explore the town.  
**Two Nights:** Gatlinburg, Park Vista DoubleTree.

**Day 3. Great Smoky Mountains Railroad** Revel in a tour highlight as you journey into the fabulous Smoky Mountains National Park on the historic Great Smoky Mountains

Railroad. Relax and soak in the scenery on this four-hour journey and choose from a range of onboard dining options. Transfer back to Gatlinburg and enjoy another chance to savour some great Southern food in one of the town's inviting restaurants this evening.

**Day 4. Gatlinburg, Chattanooga** Journey to Chattanooga, set on the banks of the Tennessee River. Board the Lookout Mountain Incline Railway for a trip on one of the world's steepest passenger railways and admire sprawling views of the town. Return to Chattanooga to check in to your hotel and explore the buzzing city.  
**Stay:** Chattanooga, DoubleTree by Hilton Downtown.

**Day 5. Chattanooga, Nashville** Visit the iconic Jack Daniels Distillery for a tour and whiskey tasting en route to Nashville. In the early evening, visit one of Nashville's most famous institutions, the legendary Grand

See the neon lights of Lower Broadway, Nashville



SAVE UP TO  
\$1,400  
per couple\*  
See pages 18-19

Tracks of the Deep South



Ole Opry, where an excellent introduction to Nashville's music heritage awaits. Three Nights: Nashville, Hyatt Place.

**Day 6. Nashville** This morning, delve further into Nashville's musical history on a guided tour. Visit the legendary RCA Studio B, where artists including Elvis Presley, The Everly Brothers and Dolly Parton once cut records and wrote songs. The rest of the day is free to spend at leisure.

**Day 7. Nashville** Today is yours to explore Nashville as you choose. You might like to take a tour tracing the city's Civil War and plantation history, explore the city's local honky-tonk heritage or dine out in Nashville's collection of cafes, bars and restaurants (own expense).

**Day 8. Nashville, Jackson, Memphis** Your journey continues to Jackson today. The capital of Mississippi, this city features many significant sights from the civil rights movement. From here, perhaps visit the West Tennessee Delta Heritage Center (own expense). Then, it's time to head for Memphis on the mighty Mississippi River. Two Nights: Memphis, The Guesthouse at Graceland.

**Day 9. Memphis** Begin your day with a visit to Graceland, the

mansion Elvis Presley called home. This afternoon, discover the main attractions of Memphis' musical history. Be transferred back to your hotel, where the remainder of the day is yours to spend at leisure.

**Day 10. Memphis, Hammond, New Orleans** ☆ This morning, you'll board Amtrak's City of New Orleans service, heading through Mississippi to Louisiana. Stopping in the city of Hammond, you'll be transported back in time on a tour of Oak Alley Plantation, located on the banks of the Mississippi, before continuing to New Orleans for a three-night stay. Three Nights: New Orleans, Sheraton Downtown.

**Day 11. New Orleans** This morning, take a tour of New Orleans' French Quarter. After lunch, take a cruise along the Mississippi, joined by a local historian who shares insights into the city's past.

**Day 12. New Orleans** Today, continue your discovery of New Orleans with time at leisure. Perhaps walk to the Mardi Gras Grandstand, the venue for the city's famous annual parade.

**Day 13. Depart New Orleans** This morning, your journey comes to an end as you are transferred to the airport for your onward flight.



Oak Alley Plantation, Louisiana

From **\$9,195** per person, twin share

13 Days – Charlotte to New Orleans (RJTD SG13)

2025 Dates and Prices (A\$) per person, twin share	Best Price From*	Standard Price From
Apr. 10	\$9,395	\$9,895
May 8; Jun. 5	\$9,495	\$9,995
Sep. 4	\$9,195	\$9,895

\*Best Price – Includes Earlybird Savings and Early Payment Discount, for full terms and conditions see pages 18-19.

Solo travellers add on from \$4,600, please enquire for details.

#### Trip Notes

**Mobility Rating Level 2: Everyday Traveller.**

Porterage is not included. Hotels are subject to change and will be confirmed in documentation. No meals are included in this tour. See terms and conditions towards the back of the brochure.

For a detailed day-by-day itinerary, up-to-date prices, savings and departure dates, search **RJTD SG13** on [travelmarvel.com.au](http://travelmarvel.com.au)



The OneTomorrow Charitable Fund is an initiative established by the APT Travel Group. OneTomorrow's mission is to make a positive and enduring impact on nature and the communities we touch. Supporting various grassroots initiatives around the world, we aim to create immediate and long-term change in important environmental and humanitarian causes.



Vancouver's Downtown Eastside Women's Centre (pictured) has been providing refuge to women and children since 1978, offering shelter, crisis relief and basic necessities to over 600 women daily. Also in Canada, Water First is dedicated to resolving water challenges faced by First Nations people, with a focus on community development and sustainable solutions.

### A WORLD OF DIFFERENCE

At OneTomorrow, we believe in travel as a platform for change. Across the APT Travel Group, we've partnered with a range of organisations and implemented initiatives to help protect the environment and ensure the wellbeing of local people wherever we go.

### MAKING TRAVEL MEAN MORE

Working together, we can support not-for-profit organisations to continue helping their communities. The best part? Donations through OneTomorrow are tax deductible\*, and all donations will be matched dollar for dollar. So together we can double our impact.

**With your help, we can continue to shape the world together**

Visit our website to learn more about the causes we support  
**[www.onetomorrow.com.au](http://www.onetomorrow.com.au)**



\*For terms and conditions, visit our website.



Lou Tandy (nee McGeary) and Robert McGeary

## PROUDLY AUSTRALIAN OWNED

It has been a privilege to welcome so many guests aboard APT Travel Group's award-winning journeys, and a joy to see those guests fall in love with each new experience the world presents. For many years, the unique spirit of our family-owned and operated company has set us apart – 2025 will be no exception. So it is with great pleasure we invite you to explore more with Travelmarvel.

**Lou Tandy (nee McGeary) and Robert McGeary**  
APT Company Owners

# General Information & Conditions

The following terms and conditions ('booking conditions') form the basis of your contract with Australian Pacific Touring Pty Ltd ('Travelmarvel', 'we' or 'our'). Please read them carefully as they set out your and our respective rights and obligations.

These Terms & Conditions were correct at time of publication. For the most up to date Terms & Conditions visit our website [www.travelmarvel.com.au/legal/general-information-conditions](http://www.travelmarvel.com.au/legal/general-information-conditions). By asking us to confirm your booking, we are entitled to assume that you have had the opportunity to read and have read these booking conditions; that you agree to them and that you agree to them applying to your holiday arrangements booked with us and which we agree to make, provide or perform (as applicable) as part of our contract with you. References in these booking conditions to your 'holiday package' are references to the tour or cruise package you have booked with Travelmarvel. References to "excursions" are references to short trips or tours included or available as part of your holiday package.

## GOVERNING LAW

These booking conditions are governed by the law in force in Victoria, Australia.

## BEFORE YOU BOOK

### PRICE VALIDITY

Published prices are valid at the time of publication but are subject to change. They may be varied by advertising or special offers, or changed after the publication date for any reason, including without limitation, to cover changes in government taxes and charges, exchange rate variations, fuel surcharges, airline charges, a force majeure event or other material increases by suppliers. The most up to date pricing may be found on our website – [www.travelmarvel.com.au](http://www.travelmarvel.com.au). Prices will be confirmed at time of booking and honoured for up to seven days. All holidays are subject to availability at the time of booking.

Please see important information listed under Special Conditions for relevant deposit and final payment terms.

### TRANSFERS

Airport transfers (where indicated in individual itineraries), are included on the first and last day of the tour package or with pre and post accommodation booked by Travelmarvel. No refund will be given for unused transfers. Transfers cannot be re-routed to other pick-up points or destinations. Passengers who miss the pre-booked transfers must make their own way to/from the ship/hotel at their own expense. Some holiday packages include group transfers from or in between airports/hotel/ships and vice versa. A group transfer is generally a shared transfer and the type of vehicle used will normally be dependent upon the size of the group. Combined cruise and land tours, or cruise include transfer and flights between tours as specified.

### PUBLIC HOLIDAYS AND FESTIVAL

Virtually all countries have public holidays, religious or otherwise. The festivities may temporarily disrupt your holiday and some religious holidays may result in a reduction of facilities and entertainment.

### EARLYBIRD OFFERS, SUPERDEALS, FLY DEALS AND SPECIAL OFFERS

Conditions Apply. For full terms and conditions relating to any Earlybird Special, Fly Deal or Special Offer on your booking, please go to [travelmarvel.com.au/specialdeals](http://travelmarvel.com.au/specialdeals)

### OTHER SPECIAL OFFERS

Special Deals and Special Offers other than those advertised herein may be promoted by Travelmarvel from time to time. These new special deals/offers do not apply to existing bookings unless otherwise stated.

### TRAVELLER CLUB

Details, including the full range of benefits and conditions, are available on our website at [www.travelmarvel.com.au/club](http://www.travelmarvel.com.au/club)

## BOOKING AND PAYING FOR YOUR HOLIDAY

### AIRFARES

Air travel is arranged with independent airlines. Travelmarvel will arrange air travel as advertised in connection with your holiday package or as otherwise arranged with Travelmarvel. All airfares are subject to flight and booking class availability as specified in the conditions. Airfares will be booked and ticketed upon receipt of your deposit to avoid price or tax increases. Airport taxes vary for each departure point and routing of airlines. Airline schedules are subject to change without notice. Once air tickets are issued, airline amendment and/or cancellation fees apply and, in some cases, are non-refundable. Name changes and voluntary date and schedule changes will incur fees. Travelmarvel is not liable for delays or disruptions of air travel. Once tickets are issued, Travelmarvel will have no other liability and will not be responsible for refunding the cost of any services booked in conjunction with the flights. Flying outside of the tour date range or re-routing your flight itinerary may incur additional surcharges. While we endeavour to accommodate your airline seating requests, these are never guaranteed and are subject to change at the airline's discretion.

### AIRLINE LOYALTY POINT ELIGIBILITY

Travelmarvel uses the services of a range of airlines in its packages. Travelmarvel does not warrant that its airfares attract loyalty points as airlines control the application of loyalty points in all cases. Requests to use airline points to upgrade travel need to be directed to the airline concerned by the member.

### TRAVELMARVEL DEPOSIT CANCELLATION PEACE OF MIND

Conditions apply: applicable when an upfront fee of \$95 per person is paid with your deposit. The holiday package can be cancelled prior to the final payment date and your deposit will be retained as a Travelmarvel holding credit to be used for future bookings. If Deposit Cancellation Peace of Mind is claimed, monies held must be used on a future cruise or tour and cannot be redeemed against the original cruise or tour departure date. Deposit held in credit will exclude fees imposed by third parties, including but not limited to air travel, rail travel and hotels. When booking airfares through Travelmarvel (including when taking advantage of a special

offer that includes air travel), standard airline cancellation fees will apply. In some cases, airfares will be non-refundable. In the event of cancellation, these fees will be deducted from the deposit paid, and therefore the credit being held. Travelmarvel Deposit Cancellation Peace of Mind applies to new bookings only and is only valid up until 100 days prior to travel. After three years, unused credit funds will incur the original cancellation conditions. This does not replace travel insurance, which we recommend you purchase at the time of booking.

### TRAVEL INSURANCE

Travel Insurance is not included in your holiday package. For your protection we strongly recommend that you purchase comprehensive travel insurance that includes (without limitation) coverage for the cost of your holiday package, medical expenses, loss of luggage, cruise and land content and airfare charges that may occur due to cancellation, impossibility of performance or other frustration, disruption, loss of deposit or strikes.

### TRAVEL INFORMATION AND DOCUMENTS

After booking you will receive an invoice with all important information relevant to your holiday package. We strongly recommend you check the details carefully and read the included information. Please ensure that you check your flight timings carefully on your tickets, particularly early morning departures. Approximately 21 days before departure you will receive your e-ticket, together with your final itinerary. However, in the case of late bookings, charges or late payment, tickets may be emailed to you.

### SPECIAL REQUESTS

Where a special request (e.g. diet, room location, twin — or double-bedded room, a particular facility at a hotel, flight seat requests and/or particular meals), is an important factor in your choice of holiday, you must advise us when your booking is made. Travelmarvel will pass your request on to the hotel, airline or other supplier but cannot guarantee that it will be accommodated. Travelmarvel will also pass on any dietary requests to the airline, but we strongly recommend that you check directly with the airline once your tickets have been issued. The provision of any special request does not constitute a term of your contract with us. Confirmation that a special request has been noted or passed on to the supplier or the inclusion of the special request on your confirmation invoice or any other documentation is not confirmation that the request will be met. Unless and until specifically confirmed, all special requests are subject to availability.

### CREDIT AND DEBIT CARD SURCHARGES

If you pay Travelmarvel by credit or debit card, surcharges will apply. In the case of credit cards a surcharge of between 1% and 3% (depending on the card used), will be added to the tour price. In the case of debit cards a charge of 0.5% will be added to the tour price.

### ACCURACY

Travelmarvel has endeavoured to ensure that the information provided about accommodation, itineraries etc., is correct to the best of its knowledge at the time of publication. However, advertised descriptions and facilities and prices may change after publication. We recommend that you confirm the details of your chosen holiday package at the time of booking. Additionally, flight times, carriers and routes are given for guidance only as there may be changes. Final details will be shown on your tickets. Holiday package or excursion itineraries may change or be different from those described in our collateral as a result of local conditions, weather conditions and annual events. Travelmarvel will endeavour to notify you of any significant changes prior to your departure.

### DISRUPTION TO CRUISING AND ITINERARY ARRANGEMENTS

Itineraries are intended as a guide only and are subject to alteration without notice. Alternations may be necessary for various reasons including, without limitation, road, rail, river or weather conditions, strikes or other reasons beyond Travelmarvel's control. If conditions render any routes unsafe for navigation, Travelmarvel reserves the right to provide alternative services including, but not limited to, accommodation on the docked ship or substitute land arrangements. Under normal river conditions, itineraries will operate as far as possible as published. However, sometimes for reasons beyond our control, it may be necessary to make alterations to your itinerary. For example, without limitation, if there is a water level problem on a river, it may be necessary to operate part of the itinerary by coach and alternative sightseeing may be included. Travelmarvel will not be liable for any direct or indirect costs that you incur as a result of any event or other factor beyond our control which necessitates a change in your itinerary. Additionally, you are not entitled to any refund for any alterations to your itinerary that are caused or contributed to by any flood or water level events or such other events which are beyond our control. Travelmarvel cannot guarantee exact arrival and departure times for carriers and operators used by Travelmarvel and Travelmarvel will not be liable for failure to make connections with any other services or attractions beyond its control.

### FLIGHT CHANGES

The flight timings detailed on your confirmation invoice, or on our website are for guidance only and are subject to alteration and confirmation. Flight timings are set by airlines and affected by events outside our control. Scheduled and charter flight timings, and days of operation are also subject to change. Travelmarvel will advise you of any significant changes as soon as it is informed by the airline. Minor timing changes will be shown on your flight tickets. Any change in the identity of the airline, flight timings or aircraft type (if advised) will not entitle you to cancel or change to other arrangements without paying any applicable cancellation fees except where specified in these booking conditions.

### OUT OF DATE RANGE FLIGHTS

If airlines have not published their schedule at the time of booking, Travelmarvel will estimate the cost of airfares connected with your holiday package. When the airline releases flight inventory and airfares, Travelmarvel will confirm booking and pricing with you by sending you an updated invoice. Once

flights have been confirmed by you and payment has been received, Travelmarvel will issue your tickets.

## FORCE MAJEURE

Force majeure event means the occurrence of an event that is beyond Travelmarvel's reasonable control, and which could not have been reasonably prevented by Travelmarvel, which includes, but is not limited to: (a) war, armed conflict, criminal damage, riot, civil strife, industrial dispute, terrorist activity or the threat of any such acts; (b) natural disaster (including but not limited to flooding, fire, earthquake, landslide), adverse weather conditions, high or low water levels; (c) nuclear or other industrial accident causing environmental pollution or contamination; or (d) change in law, meaning, enactment, amendment (including repeal) in the law or administration of any law in Australia or any jurisdiction or territory relevant to the booking contract, which includes changes in statute, regulation, determination, by-law, declaration, licence and the common law as applicable from time to time, including changes or amendments in regulations or access to services, sites or countries caused by declared epidemic or pandemic events.

### TERMINATION OF BOOKING CONTRACT OR CHANGE OF TRAVEL ARRANGEMENTS DUE TO FORCE MAJEURE

If Travelmarvel, in its reasonable opinion, considers that any force majeure event prevents Travelmarvel (whether directly or through its employees, contractors, subcontractors and agents) from lawfully or safely providing any products or services subject of the booking contract with you, Travelmarvel may immediately by written notice: (a) terminate the booking contract (in whole or in part); or (b) change your travel arrangements as reasonably practicable to ensure your safety and invoice you for any additional costs.

### LIMITATION OF LIABILITY IN THE EVENT OF FORCE MAJEURE

In the event that Travelmarvel cancels or changes your travel arrangements in any way due to a force majeure event, Travelmarvel will not be liable to you in contract, tort, statute or restitution for any loss (including, but not limited to, loss of deposit or purchase price and loss of enjoyment), damage, costs, charges, expenses or injury resulting from or in connection with (whether directly or indirectly): (a) the cancellation or change to your travel arrangements; or (b) the force majeure event. Travelmarvel is not liable to refund any part of the deposit or purchase price paid by you if Travelmarvel subsequently changes or cancels your travel arrangements in connection with a force majeure event.

Force majeure events are unpredictable and beyond Travelmarvel's control. As you are required to purchase travel insurance to adequately protect yourself against these risks, your policy needs to respond to these risks.

You acknowledge and accept that these terms are reasonably necessary to protect the legitimate interests of Travelmarvel based on expected non-recoverable costs and expenses to be incurred by Travelmarvel, including but not limited to overhead expenses and works or services performed personally by Travelmarvel, leading up to the commencement of the holiday package, alternatively prior to the force majeure event.

### DATA PROTECTION POLICY

Any personal information (including sensitive information and health information) that Travelmarvel obtains and retains from you or about you is necessary for our business purposes. Our Privacy Policy details why we collect this information, who we may disclose it to (including overseas recipients), and the main consequences if we do not collect it. Our Privacy Policy also contains information about how you may seek access to, or correction of, the personal information held about you, and our complaint resolution procedures. Our Privacy Policy is available at [www.travelmarvel.com.au/privacy](http://www.travelmarvel.com.au/privacy) or by request to us. By providing personal or sensitive information to us, you are agreeing to the terms of our Privacy Policy.

### LIMITATION OF LIABILITY

- Our holiday packages include the services of independent providers, such as hoteliers, airlines, cruise companies and other operators, who are not agents, servants or employees of Travelmarvel. Although we take care in selecting the independent service providers and the optional excursions conducted by some independent service providers, Travelmarvel is not responsible for the conduct of the independent service providers, their servants and agents or for any ramifications of that conduct. Optional excursions may, depending on your holiday package, include activities such as climbing, exploring, bike riding, swimming and snorkelling. You accept and assume the risk involved with these activities.
- If, in the opinion of any representative of Travelmarvel, your mental or physical condition, or general behaviour is such as to affect your own health and safety, render you incapable to care for yourself, cause you to become a hazard to yourself or other passengers or result in you becoming objectionable to other passengers or staff, you will not be permitted to embark or continue on the whole or any part of the holiday package. Abuse or harassment of any kind toward crew, contracted suppliers or other guests may result in immediate removal from the tour or cruise. Travelmarvel is not liable to you for any costs associated with such decision and you will not be refunded for any part of the holiday package.
- Travelmarvel accepts no responsibility for any death, injury, illness, loss (including loss of enjoyment), damage, detention, delay (including mechanical breakdown) beyond its control.
- Any term, condition or warranty express or implied by statute or otherwise in respect to the holiday packages contained in any of our collateral are excluded to the full extent permitted by law. Nothing in these booking conditions excludes, restricts or modifies the application of the Competition and Consumer Act 2010 (Cth) as amended, consolidated, supplemented or replaced.
- To the full extent permitted by law, Travelmarvel's liability arising under or in connection with these booking conditions: (a) is limited to the re-supply of the products or services or the payment of the cost of re-supply of the products or services to

you; and (b) excludes liability for any indirect or consequential losses suffered by you or any third party, howsoever caused, including but not limited to pure economic loss or any special, extraordinary or punitive damage to you or any other party.

6. Your travel agent will forward deposits and other payments to us on your behalf, but your travel agent is not our agent for the purpose of receipt of monies. Receipt of deposits and subsequent payments by the travel agent does not constitute receipt of those monies by us and the travel agent has no authority expressed or implied to receive monies on our behalf. There is no liability on the part of Travelmarvel in respect to any monies paid to your travel agent unless and until Travelmarvel notifies you (by way of a booking confirmation advice or payment receipt advice) that monies have been received by Travelmarvel. Travelmarvel reserves the right to cancel any ticket or booking or refuse to carry any passenger where payment has not been received by Travelmarvel within the specified time.

7. Specific meal requests are requests only and cannot be guaranteed.

#### LOCAL PURCHASES

Travelmarvel is not responsible for any items you may purchase locally i.e.: jewellery/furniture etc. You acknowledge that you are solely responsible for any import duty or freight costs.

#### PERSONAL BELONGINGS & LOST ITEMS

For security reasons valuables should be kept to a minimum and packed in your hand luggage along with your medicines, camera, electrical or battery-operated appliances, as well as basic essentials such as a change of clothing and toiletries. It is your responsibility to look after your property at all times and you must ensure you are adequately covered by comprehensive travel insurance in the event of any loss.

#### MEDICAL ASSISTANCE

Travelmarvel does not employ medical staff on our tours or ships. If you require medical attention, local medical services can be contacted immediately. You are responsible for all charges that result from a visiting a medical facility, or for a medical practitioner visiting you. Travelmarvel is not responsible for the type or quality of the medical services you may receive.

#### SMOKING

Government regulations forbid smoking in tourist coaches, however frequent stops are made for those wishing to smoke. Smoking is not permitted in hotel rooms or ship cabins. Requests for smoking/non-smoking rooms will be passed on to hotels but cannot be guaranteed.

#### RESPONSIBLE SERVICE OF ALCOHOL

Our staff are trained in the responsible service of alcohol and are obliged by law to refuse service to any guest who, in their reasonable opinion appears to be intoxicated or behaves in an aggressive or offensive manner.

#### SERVICE ENQUIRIES

If a problem occurs during your holiday, you should, in your own interests, inform your Tour Director so that steps can be taken to resolve the matter. If you remain dissatisfied, any complaint must be made in writing to Travelmarvel within 30 days.

#### LUGGAGE LIMITS

Each passenger is entitled to take one piece of luggage that does not exceed 160cm (63 inches) or weigh more than 20kg (44 pounds). Dimensions for checked baggage are calculated by adding together the width, height, and depth of the piece of baggage. An extra charge will be imposed to cover portage handling of any additional luggage. Your Tour/Cruise Director will advise you of the exact additional charge.

#### SPECIFIC TERMS AND CONDITIONS PERTAINING TO GREAT RAIL JOURNEY HOLIDAYS:

A non-refundable \$1,000 security deposit per person, per holiday package is required within seven days of booking confirmation for all rail journeys. Deposit requirements may vary when booking a special offer.

Final payment of the balance of your holiday package price is due 100 days prior to departure unless stated in the terms of a special offer. Travelmarvel reserves the right to cancel any ticket or booking or, refuse to honour any price or carry any passenger where any payment has not been received by Travelmarvel within the specified time. All fares and charges are in Australian currency. Payment in full is required at time of booking for reservations made less than 100 days before departure from Australia or New Zealand. If Travelmarvel is unable to confirm your reservation, all monies will be refunded.

#### TRAVELLING WITH MINORS

Children under 12 years of age are not recommended on tours and cruises. Children under 18 years of age must be accompanied by an adult and share their accommodation with an adult.

#### INCLUDED IN HOLIDAY PACKAGE PRICE

All coach/rail and travel, accommodation, airfares, and gratuities (where indicated in individual itineraries), airport transfers on the first and last day, sightseeing, specified excursions, meals and beverages as stated, admissions, port charges and the services of a Great Rail Journeys Tour Escort or Travelmarvel Cruise/Tour Director as stated in your itinerary.

#### NOT INCLUDED IN HOLIDAY PACKAGE PRICE

Airfares (unless specified), airport taxes, laundry, passport and visa fees (unless specified), food not on the regular table d'hôte menu, beverages unless indicated otherwise, excess baggage, fuel surcharges, optional excursions and gratuities not specified in your itinerary. While portage is included on most rail journeys, it is not included on all tours. Please refer to the individual "Tour Notes" within individual itineraries for exclusions.

#### GRATUITIES

Gratuities for the rail/land/cruise portion of your tour are included in your tour price as specified. Gratuities cannot be redeemed for cash.

#### CHOOSING YOUR HOLIDAY

To maximise your enjoyment of your Travelmarvel holiday and to ensure that it lives up to your expectations it is important that you choose the right holiday package for you. Our publication contains limited information, however, there is more information on our website at [www.travelmarvel.com.au](http://www.travelmarvel.com.au) and our qualified staff are available to discuss your options.

#### HOTELS & OVERNIGHT TRAINS

Standards of overnight trains vary in each destination and may not include private bathroom facilities, please enquire for details. International hotel rooms may be smaller than those in Australia and New Zealand. Travelmarvel endeavours to utilise the most suitable accommodation available in each destination to ensure that passengers enjoy high levels of cleanliness, comfort and service. The hotels listed will be used on almost all holiday packages; however, if a change is necessary for any reason, Travelmarvel will endeavour to ensure that alternative accommodation is of an equivalent standard to those shown. Hotel rooms are generally not available for check-in before 3pm and require check-out by 10am. Where guaranteed use is required outside of these times you may be required to book and pay for additional nights.

#### TWIN OR DOUBLE ROOMS

Accommodation in all hotels, regardless of the rating, is in standard rooms (sometimes named superior/deluxe) based on twins or doubles unless otherwise stated. Many sleeper trains only offer bunk-style bedding. Bedding configurations on board cruises vary depending on the category booked.

#### CRUISING – CABIN/SUITE/STATEROOM SELECTION

Travelmarvel will make every effort to assign specific cabins, cabin numbers or locations on the ship if requested. If this is not possible, Travelmarvel reserves the right to make changes to cabin assignment, within the category booked, without prior notice.

#### SOLO TRAVELLERS

A limited number of single rooms/suites/cabins may be available by request at time of booking your holiday package. Single rooms and suites may be smaller than standard twin or double rooms and, in some cases, may only have one single bed.

#### PASSENGERS NEEDING ASSISTANCE

Travelmarvel welcomes all passengers. Please note:

1. Passengers with a disability or medical condition requiring assistance must inform Travelmarvel at the time of booking of all important information relating to your health, mobility and fitness which may affect your partial or total participation in the cruise or tour. This information will allow Travelmarvel to ensure the tour you have chosen is suitable and meets your needs. Any changes to health, mobility and fitness must also be reported to Travelmarvel as soon as possible and prior to departure. Where possible Travelmarvel will make reasonable adjustments to the tour to assist you however, it cannot do so if the adjustment required would be unreasonable in all of the circumstances, including if such adjustments would affect your safety and/or the safety and/or enjoyment of other passengers.

2. If you require special assistance or care (such as pushing a wheelchair, assistance with dressing or assistance with walking), you must travel with a companion capable of providing the required assistance or care. Travelmarvel is unable to assist any passenger with walking, dining, boarding or disembarking any transportation vehicles (including river and ocean ships and trains). To safely participate in embarkation and disembarkation you must be able to do so without the need for assistance. You must also be able to do so without unreasonably impacting other passengers' safety and/or enjoyment.

3. While Travelmarvel will make reasonable efforts to accommodate everyone, it is not responsible for any denial of services by any third-party entities it has travel arrangements with, such as carriers, hotels, trains, restaurants or other independent suppliers, or for any additional associated expenses charges by those parties.

4. Please note coaches and minibuses are not equipped with wheelchair ramps. Guests on Rail Journeys will need to embark and disembark trains which may not be level with the platform. Many ships require the use of stairs to go between decks. Further, side by side docking may require passengers to climb and descend stairs to cross over vessels to disembark and embark at times. Travelmarvel ships may sail through areas that do not have convenient docking facilities. In such circumstances it will be necessary for passengers to negotiate temporary gangplanks and uneven surfaces. If the crew decide that it is not safe for a passenger to negotiate such operations, they may require passengers to stay on board. Cabin doors and restrooms are not wide enough to allow access by standard wheelchairs. Wheelchairs and walkers cannot be carried on coaches, due to space limitations. For safety reasons, passengers in wheelchairs cannot be carried on ramps in ports where the river or ocean cruise ship is at anchor. Older or historic trains do not have wheelchair facilities or provisions for using a wheelchair.

#### HEALTH & FITNESS

A good level of health and fitness is required to participate on Travelmarvel's holiday packages. In some destinations there are extensive sightseeing excursions by foot which include navigating uneven ground and climbing stairs. Mobility is needed boarding or alighting coaches, river cruise ships and trains. We recommend a visit to the doctor and dentist before travelling. It is your responsibility to advise Travelmarvel of any pre-existing medical conditions that may affect the normal conduct of a holiday package and the enjoyment of other guests. A Health, Fitness & Mobility Questionnaire will be provided and requested to be completed at the time of booking if you advise of any health, fitness or mobility issues. Travelmarvel is not liable for any injury, illness, or loss of enjoyment which could have been reasonably prevented had we been made aware of a pre-existing condition and been provided an opportunity to review it. We will not be responsible for any costs associated with cancellation penalties or the return of passengers from a tour, and a refund for lost touring cannot be claimed.

#### VISA AND PASSPORTS

All passengers must have a valid passport that is valid for at least six months after the holiday package return date. Passengers must consult with the appropriate consulates to ensure that they have any applicable visas for countries included in the holiday package prior to departure. Passengers are solely responsible for meeting necessary passport and visa entry requirements and paying all associated costs. Travelmarvel is not responsible for delays or missed portions of the holiday package resulting from incorrect travel documents or visas.

#### SHORE EXCURSIONS

The timing of the shore excursions on all holiday packages may differ slightly for each departure. The published times are a guide only and may change without notice. It is impossible for large coaches to be used for some city sightseeing excursions and many towns and cities will be visited by way of walking tours. For cruising, clients must be able to climb ramps to embark or disembark river cruise ships. Depending on water levels, there may be a number of steep steps. Holiday packages including time in Switzerland and other alpine regions may include mountain excursions to, at times, high altitudes.

#### IF YOU NEED TO CHANGE OR CANCEL YOUR HOLIDAY

If you want to change any part of your holiday arrangements after the invoice has been issued, we will do our best to make the change, but it may not be possible. Any request for changes must be made in writing by the person who made the original booking, or their travel agent. If it is possible to make the change, it will be subject to an administration charge and payment of any further costs incurred as a result of the change.

#### CANCELLATION POLICY

For all holiday packages in this brochure, Travelmarvel cancellation fees apply as follows (in addition to charges of any independent suppliers e.g.: airlines and hotels):

Days of Notice	Fee Per Person
Prior to Departure	Loss of deposit
100 days or more	Loss of deposit
99-61 days	50% of holiday package price
60 days or less	100% of holiday package price

If your holiday has commenced, 100% of the full holiday package price is charged. There is no refund for unused services or if portions of the holiday package are missed. Additional cancellation fees may also be charged in respect of accommodation reserved outside the holiday package dates. These cancellation fees are in addition to any fees that may be levied by Travelmarvel and your travel agent (if any). You acknowledge that the amounts estimated under the Cancellation Policy are reasonable and represent a genuine pre-estimate of Travelmarvel's loss and are otherwise reasonably necessary to protect the legitimate interests of Travelmarvel. If you request changes after Travelmarvel has issued your documents, Travelmarvel may charge you an administration and processing fee of \$70 per person in addition to any applicable cancellation fees.

#### CANCELLATION OF TICKETED AIRFARES

A Travelmarvel cancellation fee of \$50 per person applies for ticketed airfares, in addition to any airline cancellation fees that are applicable.

#### CHANGES TO TICKETED AIRFARES

If you wish to amend the date or touring on your ticketed air booking, a Travelmarvel amendment fee of \$30 per person for the first change and \$85 per person for any subsequent changes will be charged in addition to airline change fees and additional taxes that are applicable. If, for any reason, a name change to a ticketed airfare is required, a \$125 per person name change fee will apply for every change in addition to any applicable airline fees.

#### IF WE NEED TO CHANGE OR CANCEL YOUR HOLIDAY

Travelmarvel endeavours to provide you with all the services confirmed to you at the time of your booking. However, we plan arrangements a long time in advance of your departure date using independent suppliers such as airline, hotels, etc., over whom we have no direct control. On occasions changes do have to be made, and Travelmarvel reserves the right to cancel or amend holiday packages/excursions accordingly. Group tours require a minimum number of bookings in order for the tour to be financially viable and to have a pleasant group atmosphere. In the event that adequate numbers cannot be achieved, it may be necessary to cancel a scheduled departure and offer the nearest possible alternative date (or a full refund of monies paid for arrangements made by Travelmarvel).

#### ON HOLIDAY

#### NOISE & VIBRATION

You acknowledge and accept that some noise and vibration may be experienced and Travelmarvel is not liable to you for any such noise or vibration.

Travelmarvel takes reasonable steps to minimise noise and vibrations on its cruise ships.

#### GREAT RAIL JOURNEYS

Rail journeys are operated by our partner Great Rail Journeys, based in York (UK), and are escorted by a Great Rail Journeys Tour Escort. For tours operated by our partner, your contact is with Great Rail Journeys as the principal operator of the tour. Portage is not included on all of the rail journey programs. (See individual itineraries). We strongly recommend you limit your luggage to one suitcase weighing less than the standard airline allowable luggage limit, to ensure you are able to manage your luggage both on and off trains and at other points throughout your journey.

#### MAPS WITHIN THIS PUBLICATION

Note that maps may not be to scale.

#### IMAGES WITHIN THIS PUBLICATION

Some images in this publication are copyright of, and have been reproduced with the permission of: Great Rail Journeys; Durango Silverton Train; Great Rail Journeys; Bernina Express; Glacier Express; Jacobite Steam Train; Bernina Railway; Jungfrau Railway; Fläm Railway; Grand Canyon Railway.

Publication No. TM-2666AU. Prices and publication are valid from 16 August 2024 and supersede all previous prices and publications.



# TRAVELMARVEL

Travel More

## Premium Cruising & Touring



### RESERVATIONS & ENQUIRIES

Free Call: 1300 300 036  
 Online: [travelmarvel.com.au](http://travelmarvel.com.au)  
 Email: [info@travelmarvel.com.au](mailto:info@travelmarvel.com.au)

Group Reservations  
 1800 655 440

Worldwide Offices  
 Melbourne Europe  
 New Zealand United Kingdom  
 North America

HEAD OFFICE Australian Pacific Touring Pty Ltd (ABN 44 004 684 619).  
 ATAS accreditation #A10825) Level 4, 1230 Nepean Highway, Cheltenham, VIC 3192.  
 VALIDITY – Printed in Australia. Publication No. TM-2666AU. Effective from  
 16 August 2024, publication supersedes all previous publications.

### YOUR LOCAL TRAVEL AGENT

Find us on:

