

# SCENIC°

LUXURY CRUISES & TOURS

## ULTRA-LUXURY EUROPE RIVER CRUISING

& Land Journeys

2026 EARLY ACCESS



**2026 AT 2025 PRICES**

**Plus, Super Earlybird Airfare Offers\***

# *A journey along Europe's waterways for cultural and scenic wonders*



The Rhine, Main, Danube and Moselle rivers intertwine Europe's beauty with sweeping valleys, fairytale castles and charming villages.



Unveil a mosaic of French culture, history and culinary delights. Glide through Paris, discover delicacies in Bordeaux or uncover the Seine, Saône and Rhône rivers.



Winding by family-run quintas, Portugal's Douro River enchants with its scenic beauty, historic charm, and the cultural richness of the Iberian Peninsula.



Travelling to 14 countries across 12 rivers with a selection of more than 20 itineraries, choose from an exceptional range of options to uncover Europe's iconic destinations and hidden gems.



# Truly all-inclusive, in a class of its own

It's more than just taking care of you. It's ensuring your entire river cruise is relaxing and carefree. We are dedicated to anticipating and fulfilling your needs, so you can enjoy a truly exceptional journey.



## Suites

- Personalised butler service for every suite
- Your choice of a spacious Standard Suite or a Balcony Suite with innovative all-weather Scenic Sun Lounge

## Expert Team

- Experienced Cruise Director to guide and assist
- Enrichment Manager for on board entertainment and activities
- Expert local guides



## Dining & Beverages

- Up to five culinary experiences, from casual to fine dining
- Premium beverages^ included, all day, every day – not just at meal times
- Complimentary in-suite mini-bar replenished every day

## Included Experiences

- Exclusive Scenic Enrich events inaccessible to the ordinary traveller
- A range of Scenic Freechoice experiences to personalise your journey, included always



## Unrivalled Wellness

- Stretch classes
- Vitality Pool#
- Salt Therapy Lounge on select ships on the Rhine, Main, Danube and Moselle rivers, Bordeaux and the south of France#
- Fitness centre
- E-bikes to uncover Europe like a local#

## Your Peace of Mind

- All tipping and gratuities (on board and onshore)
- Complimentary Wi-Fi
- Return airport transfers\* upon arrival and departure at your destination
- Pre and post-cruise support to organise journey extensions, cruise combinations, packing tips and other information



^All beverages are included except for a very small number of fine and vintage wines, Champagnes and spirits. #Not available on all ships. Safety helmets will be supplied and should be worn when riding e-bikes. \*Conditions apply. In the event of a deviation some services and inclusions may not be provided in line with these depictions. The above inclusions apply to Europe river cruise only and differ to city stays and extensions or land journeys. Please see pages 52-57 for more details.

# 2026 Super Earlybird Offers

Book now to secure the best availability and offer.

**2026 at 2025 pricing - Limited time only<sup>^</sup>.**



## Special Airfare Offers

Enjoy Economy Flights included or receive an air credit of up to \$4,500pp towards your Business Class flights, based on your river cruise, duration and suite category.\*

## River Cruise Savings

Save up to \$2,500pp when you book a river cruise of 8 days or more, excluding flights.\*



## River & Land Journeys

Save \$2,900pp when you book a combined river cruise and land journey.\*

### Cruise Combinations

Receive up to \$7,500pp Business Class flight credit when combining two river cruises.†

### Solo Travellers

Save up to 75% off the Single Supplement on selected Europe river cruises.~

### Group Offers

For groups of 10 guests or more, our dedicated Scenic Groups Team can assist with special offers.

**View more details at [scenic.com.au/offers](https://scenic.com.au/offers)**

<sup>^</sup>2026 fares at 2025 prices are based on the applicable cruise fare where available and exclude port taxes and charges for new bookings made by 31 March 2025 or until sold out or withdrawn. All bookings require a non-refundable deposit of \$1,000 per person, due within 7 days of booking. For Super Earlybird offers full payment is due 10 months prior to departure or if booking is made within 10 months of departure, full payment is due within 30 days of booking. \*All Flight offers are based on departures from Australia, subject to availability and terms and conditions. Economy Class flights included offer is up to the airfare value of \$3,000 per person and is available on selected river cruises of 11 days or longer, subject to availability. If the required airfare is greater than \$3,000 air surcharges will apply. Flights must be booked with Scenic. Business Class flight credit up to \$4,500 per person is valid for select itineraries of 11 days or more, departing Mar/Jul/Aug/Oct/Nov 2026 for guests booked on Diamond and Sapphire decks excluding Category BS. \*River Cruise Savings Save \$2,500 per person on select river cruises of 10 day or more or save \$1,300 per person on select 8-day itineraries in France and Portugal. These savings are not combinable with flight offers. Save \$2,900pp\* on Europe Land Journeys of 12 days or longer, includes \$400pp savings on land journey combinable with \$2,500pp river cruise savings offer. †Cruise combinations: Valid on select combination journey codes where two or more river cruises are booked back-to-back and in the same booking, receive Economy Class flights included or Business Class flight credit. Business Class flight credit of \$7,500 per person offer is available on selected departures when two departures of 11 days or longer are combined or \$6,000 per person offer is available when combining with an 8 day departure. ~Single Supplement Savings are based on the cruise, excludes airfares, port charges, taxes, any pre or post land touring, hotel stays and other additional items. Offer not combinable with any other offer and is strictly limited to suites available on set departures, subject to availability. For all offer terms and conditions see [scenic.com.au/offers](https://scenic.com.au/offers). All offers are strictly limited and subject to availability, until sold out or withdrawn. Valid for new bookings only in addition to the full terms and conditions on [scenic.com.au/terms](https://scenic.com.au/terms)

*Europe River Cruising Super Earlybird Offers*

# *The most all-inclusive cruise on Europe's waterways*



**E-bikes, Dürnstein, Wachau Valley, Austria**

**A** Pérouges, France **B** Palais Liechtenstein concert, Austria

*For more information visit [scenic.com.au](http://scenic.com.au)*

With rich history, diverse cultures and timeless architecture, you will be transported back in time to yesteryear. Embark on an enchanting journey, knowing you will experience the very best of this region in all-inclusive ultra-luxury.

## Personalise your journey

From e-bike cycles through vineyards to strolling through historic cities and quaint villages, Scenic Freechoice excursions let you personalise your journey.

These all-inclusive experiences offer interactive encounters, engaging activities and cultural immersion. The choice is yours.



## Enriching experiences

A Scenic Enrich experience is like no other. Included in your river cruise journey are exclusive events that create truly immersive discoveries and unforgettable moments.

Be spellbound at private classical concerts in France, Germany or Hungary and be captivated by the magic of these enchanting evenings.



## *Truly all-inclusive ultra-luxury river cruising*

- 5-Star Scenic Space-Ships for up to 163 guests
- Your choice of a spacious Standard Suite or a Balcony Suite with an innovative Scenic Sun Lounge
- Butler service for every suite
- Enjoy up to five dining experiences with all on board meals included
- Premium beverages^ all day, every day
- Complimentary mini-bar restocked daily
- Scenic Enrich – exclusive events to immerse you in the local culture
- Scenic Freechoice – included excursions always, to personalise your journey
- E-bikes to explore independently\*
- On board Wellness Coach and a fitness area featuring a Salt Therapy Lounge
- Complimentary Wi-Fi on board
- Experienced Scenic Cruise Director to guide and assist
- Enrichment Manager for on board entertainment and activities
- Expert local guides in each town
- Return airport transfers in Europe\*
- Tipping and gratuities included on board and onshore

^All beverages are included except for a very small number of fine and vintage wines, Champagnes and spirits.

\*Safety helmets will be supplied and should be worn when riding e-bikes. \*Conditions apply. In the event of a deviation some services and inclusions may not be provided in line with these depictions. Please see page 52-57 for more details.

# *Highlights for 2026*



**Neuschwanstein Castle, Germany**



Introducing all-new ways to delve further into Europe's treasures. Enhance your truly all-inclusive Scenic river cruise with a stay in London's vibrant heart, a relaxing cruise along the Rhine and Moselle rivers or a fairytale trip through Bavaria.

## Europe your way

At Scenic, we believe in the power of choice. Each season, we introduce new itineraries, extensions, Scenic Freechoice excursions and Scenic Enrich events that allow you to personalise your journey to your tastes and pace.

In 2026, we've created exciting new itineraries for you to experience Europe's spectacular landscapes and waterways in one seamless journey.

You can make the most of your river cruise with a city stay or extension. Or create the ultimate holiday by adding our land journeys and Scenic Eclipse ocean voyages.



## Best of Bavaria

Discover Germany by land and water by extending your river cruise with a 5-day exploration of Bavaria. Experience the history of Munich, explore the spectacular Neuschwanstein Castle and be charmed by historic Nuremberg.



## Rhine & Moselle

Delve into the spectacular scenery of the Moselle Valley on this 8-day cruise. See fairytale castles, terraced vineyards, postcard villages and half-timbered houses.



## London enhanced

From Big Ben to Buckingham Palace, experience the sights of London on this 4-day city stay. Enjoy afternoon tea with a twist at Great Scotland Yard Hotel and explore Kensington Palace.

# *Flowers and festivity across the heart of Europe*



Keukenhof Gardens, the Netherlands

- A** Hoorn, the Netherlands
- B** Europe Christmas markets
- C** Salzburg, Austria

*For more information visit [scenic.com.au](http://scenic.com.au)*

From the blossoming tulips of spring to festive celebrations in a winter wonderland, our European seasonal cruise itineraries are designed with unique and memorable experiences. Be immersed in local traditions and unforgettable destinations in ultra-luxury.

## Spring Affair

A picturesque landscape of colour awaits visitors to the Netherlands and Belgium during spring's full bloom. Embark on a journey of new beginnings as your 5-star Scenic Space-Ship takes you from charming Amsterdam along the great Dutch rivers. You'll explore sleepy towns and thriving modern cities, visit authentic windmills and pass iconic fields of tulips as Europe blossoms around you.



## Festive Celebration

Europe becomes even more magical during the festive season. Soak up the spirit of the season as you explore traditional Christmas markets across Germany and Austria. Experience the aroma of gingerbread and roasted chestnuts, visit the Rhineland's largest Tannenbaum (Christmas tree) and celebrate Christmas and New Year for a December to remember.



## Winter Wonderland **NEW**

Europe is magical as winter sets in, a time when the region's greatest cities, waterways and hidden gems take on a stunning new dimension. Along with some spectacular scenery, the extended season provides many great opportunities for travellers with reduced crowds and greater value during the months of February, March, October and November.



# Scenic Space-Ships



*Panorama Deck*

*Panorama Lounge & Bar*

*Portobellos/L'Amour*

*Crystal Dining*

*River Café*

*Wellness Area*

*Standard Suites*

*Jewel Deck*

It's more than an elegant, 5-star, floating hotel. When you board your Space-Ship, unpack and settle into your spacious, luxurious suite. Explore the light-filled public spaces and relax, indulge and dream, as the historic panoramas of Europe's legendary waterways pass gently by.



Scenic Sapphire in the south of France used as example. Please note not all ships are equipped with all amenities or follow the same deck plan. This layout is a general indication only and may vary from ship to ship. In the event of a deviation some services and inclusions may not be provided in line with these depictions. Please see pages 52-57 for more details.

# *The Rhine, Main, Danube & Moselle rivers*



From sweeping valleys and gorges dotted with fairytale-like castles to picture-postcard villages where time has stood still. The towns and cities that fringe Europe's waterways are unrivalled masterpieces.



Scenic Jasper, Bremm, Germany

## Rhine, Main, Danube & Moselle



Bamberg, Germany

### Jewels of Europe

🕒 15 Day river cruise



- Day 01-02 **Amsterdam**
- Day 03 Cologne > Bonn
- Day 04 Rhine Gorge > Rudesheim
- Day 05 Miltenberg > Wertheim
- Day 06 Würzburg
- Day 07 Bamberg
- Day 08 Nuremberg
- Day 09 Regensburg
- Day 10 Passau > Schlägen
- Day 11 Dürnstein > Krems
- Day 12-13 Vienna
- Day 14-15 **Budapest**

**Journey Code: STC**

Amsterdam > Budapest

2026 Feb 23\*\*, Mar 25^, Apr 08, 20, 21\*, 22\*  
 May 05, 06^, 12^, 19\*, 20^, Jun 02, 03^, 09^,  
 17^, 23^, Jul 01^, 07^, 15^, 29^, Aug 04^, 12^,  
 18^, 26^, Sep 01^, 09^, 15^, 23^, 29^, Oct 07^,  
 21^, 27\*, 28, Nov 10

**2026 at 2025 Prices†**

Standard Suite from \$8,695pp  
 Balcony Suite from \$12,900pp

### Jewels of Europe with Paris and Prague

🕒 21 Day river cruise & city stay



- Day 01-03 **Paris**
- Day 04 Paris > Amsterdam
- Day 05 Amsterdam
- Day 06 Cologne > Bonn
- Day 07 Rhine Gorge > Rudesheim
- Day 08 Miltenberg > Wertheim
- Day 09 Würzburg
- Day 10 Bamberg
- Day 11 Nuremberg
- Day 12 Regensburg
- Day 13 Passau > Schlägen
- Day 14 Dürnstein > Krems
- Day 15-16 Vienna
- Day 17 Budapest
- Day 18 Budapest > Prague
- Day 19-21 **Prague**

**Journey Code: PACP**

Paris > Prague

2026 May 03, 09, 17\*, Jun 06, 20^, 28\*,  
 Jul 12, Aug 09\*, 15, 29, Sep 06^, Oct 04

**2026 at 2025 Prices†**

Standard Suite from \$15,730pp  
 Balcony Suite from \$19,935pp

### Jewels of Europe with Ljubljana & Zagreb

🕒 19 Day river cruise & extension



- Day 01-02 **Amsterdam**
- Day 03 Cologne > Bonn
- Day 04 Rhine Gorge > Rudesheim
- Day 05 Miltenberg > Wertheim
- Day 06 Würzburg
- Day 07 Bamberg
- Day 08 Nuremberg
- Day 09 Regensburg
- Day 10 Passau > Schlägen
- Day 11 Dürnstein > Krems
- Day 12-13 Vienna
- Day 14-15 Budapest > Ljubljana
- Day 16 Ljubljana
- Day 17 Ljubljana > Zagreb
- Day 18-19 **Zagreb**

**Journey Code: SGZA**

Amsterdam > Zagreb

2026 May 05, 08\*, Aug 26

**2026 at 2025 Prices†**

Standard Suite from \$13,450pp  
 Balcony Suite from \$17,655pp

**For Super Earlybird Offers please refer to page 5**

The itineraries outlined are a guide only and may be amended for operational reasons. All prices are per person, twin share in AUD and include taxes and charges. †2026 fares at 2025 prices are based on the applicable cruise fare where available and excludes port taxes and charges for new bookings made by 31 March 2025 or until sold out or withdrawn. ‡Limited Time Early Access refers to new itineraries where prices have not been held. These rates are subject to availability and change. All bookings require a non-refundable deposit of \$1,000 per person due within 7 days of booking. For Super Earlybird offers full payment is due 10 months prior to departure or if booking is made within 10 months of departure, full payment is due within 30 days of booking. ^Cruise operates in both directions. \*Cruise operates in reverse. #Altered itinerary. Please refer to page 5 and visit scenic.com.au/river/offers for detail or visit scenic.com.au to search the journey code and view applicable offers per itinerary. All bookings are subject to Scenic full terms and conditions, refer to pages 52-57 or visit scenic.com.au/terms

To explore these itineraries further, search for the journey code at scenic.com.au



Rhine, Main, Danube & Moselle



Moselle Valley, Germany

### Jewels of Europe with London **NEW**

🕒 18 Day river cruise & city stay



- Day 01-02 **Budapest**
- Day 03-04 **Vienna**
- Day 05 **Krems > Dürnstein**
- Day 06 **Brandstatt > Passau**
- Day 07 **Regensburg**
- Day 08 **Nuremberg**
- Day 09 **Bamberg**
- Day 10 **Würzburg**
- Day 11 **Wertheim > Miltenberg**
- Day 12 **Rüdesheim > Rhine Gorge**
- Day 13 **Cologne**
- Day 14 **Amsterdam**
- Day 15 **Amsterdam > London**
- Day 16-18 **London**

**Journey Code: CRLO**

Budapest > London  
2026 May 06, Aug 12, Sep 01

**Limited Time Early Access\***

Standard Suite from \$14,790pp  
Balcony Suite from \$18,995pp

### Romantic Rhine & Moselle

🕒 15 Day river cruise



- Day 01 **Amsterdam**
- Day 02 **Amsterdam > Utrecht**
- Day 03 **Veere**
- Day 04 **Antwerp**
- Day 05 **Arnhem**
- Day 06 **Düsseldorf**
- Day 07 **Moselle Valley Cruising**
- Day 08 **Cochem > Bernkastel**
- Day 09 **Bernkastel**
- Day 10 **Koblenz**
- Day 11 **Koblenz > Rüdesheim**
- Day 12 **Mannheim**
- Day 13 **Strasbourg**
- Day 14 **Breisach**
- Day 15 **Basel > Zurich**

**Journey Code: AMBA**

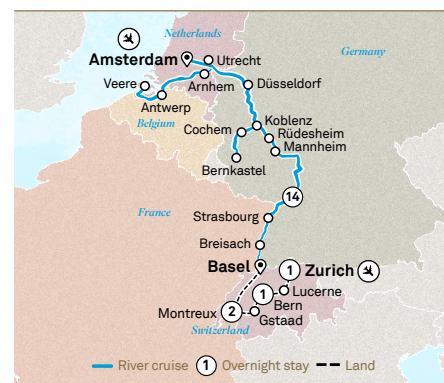
Amsterdam > Zurich  
2026 Mar 23, Apr 14, 28\*, May 06, 20, 27,  
Jun 10, 17, Jul 01\*, 15, 29, Aug 12\*, 26,  
Sep 02, 16, Oct 13, 14\* 27\*

**2026 at 2025 Prices\***

Standard Suite from \$9,195pp  
Balcony Suite from \$13,400pp

### Romantic Rhine & Moselle with Switzerland

🕒 19 Day river cruise & extension



- Day 01 **Amsterdam**
- Day 02-03 **Utrecht > Veere**
- Day 04 **Antwerp**
- Day 05-06 **Arnhem > Düsseldorf**
- Day 07 **Moselle Valley Cruising**
- Day 08-09 **Cochem > Bernkastel**
- Day 10 **Koblenz**
- Day 11 **Koblenz > Rüdesheim**
- Day 12 **Mannheim**
- Day 13 **Strasbourg**
- Day 14 **Breisach**
- Day 15 **Basel > Montreux**
- Day 16 **Montreux**
- Day 17 **Montreux > Bern**
- Day 18 **Bern > Lucerne > Zurich**
- Day 19 **Zurich**

**Journey Code: AMZU**

Amsterdam > Zurich  
2026 Apr 24\*, May 20, Jun 10, 27\*, Jul 15,  
29, Sep 16

**2026 at 2025 Prices\***

Standard Suite from \$13,925pp  
Balcony Suite from \$18,130pp

*For Super Earlybird Offers please refer to page 5*

The itineraries outlined are a guide only and may be amended for operational reasons. All prices are per person, twin share in AUD and include taxes and charges. †2026 fares at 2025 prices are based on the applicable cruise fare where available and excludes port taxes and charges for new bookings made by 31 March 2025 or until sold out or withdrawn. ‡Limited Time Early Access refers to new itineraries where prices have not been held. These rates are subject to availability and change. All bookings require a non-refundable deposit of \$1,000 per person due within 7 days of booking. For Super Earlybird offers full payment is due 10 months prior to departure or if booking is made within 10 months of departure, full payment is due within 30 days of booking. \*Cruise operates in both directions. †Cruise operates in reverse. #Altered itinerary. Please refer to page 5 and visit scenic.com.au/river/offers for detail or visit scenic.com.au to search the journey code and view applicable offers per itinerary. All bookings are subject to Scenic full terms and conditions, refer to pages 52-57 or visit scenic.com.au/terms

# Rhine, Main, Danube & Moselle



Lake Bled, Slovenia

## Danube in Depth

🕒 10 Day river cruise



- Day 01 **Munich** > Nuremberg
- Day 02 Nuremberg
- Day 03 Regensburg
- Day 04 Passau
- Day 05 Linz
- Day 06 Dürnstein > Krems
- Day 07 Vienna
- Day 08 Vienna > Bratislava
- Day 09-10 **Budapest**

### Journey Code: GHMB

Munich > Budapest

2026 Apr 24\*, May 03, Jun 16\*, 25, Jul 18\*, 27, Aug 19\*, 28

### 2026 at 2025 Prices†

Standard Suite from \$7,195pp  
Balcony Suite from \$9,570pp

## Danube in Depth with Prague

🕒 13 Day river cruise & city stay



- Day 01-03 **Prague**
- Day 04 Prague > Nuremberg
- Day 05 Nuremberg
- Day 06 Regensburg
- Day 07 Passau
- Day 08 Linz
- Day 09 Dürnstein > Krems
- Day 10 Vienna
- Day 11 Vienna > Bratislava
- Day 12-13 **Budapest**

### Journey Code: GHPB

Prague > Budapest

2026 Apr 24\*, 30, Jun 16\*, 22, Jul 18\*, 24, Aug 19\*, 25

### 2026 at 2025 Prices†

Standard Suite from \$8,845pp  
Balcony Suite from \$11,220pp

## Danube in Depth with Ljubljana & Zagreb

🕒 14 Day river cruise & extension



- Day 01 **Munich** > Nuremberg
- Day 02 Nuremberg
- Day 03 Regensburg
- Day 04 Passau
- Day 05 Linz
- Day 06 Dürnstein > Krems
- Day 07 Vienna
- Day 08 Vienna > Bratislava
- Day 09 Budapest
- Day 10 Budapest > Ljubljana
- Day 11 Ljubljana
- Day 12 Ljubljana > Zagreb
- Day 13-14 **Zagreb**

### Journey Code: GHMZ

Munich > Zagreb

2026 May 03, Jun 12\*, Aug 28

### 2026 at 2025 Prices†

Standard Suite from \$9,100pp  
Balcony Suite from \$11,475pp

For Super Earlybird Offers please refer to page 5

The itineraries outlined are a guide only and may be amended for operational reasons. All prices are per person, twin share in AUD and include taxes and charges. †2026 fares at 2025 prices are based on the applicable cruise fare where available and excludes port taxes and charges for new bookings made by 31 March 2025 or until sold out or withdrawn. ‡Limited Time Early Access refers to new itineraries where prices have not been held. These rates are subject to availability and change. All bookings require a non-refundable deposit of \$1,000 per person due within 7 days of booking. For Super Earlybird offers full payment is due 10 months prior to departure or if booking is made within 10 months of departure, full payment is due within 30 days of booking. \*Cruise operates in both directions. †Cruise operates in reverse. ‡Altered itinerary. Please refer to page 5 and visit scenic.com.au/river/offers for detail or visit scenic.com.au to search the journey code and view applicable offers per itinerary. All bookings are subject to Scenic full terms and conditions, refer to pages 52-57 or visit scenic.com.au/terms

To explore these itineraries further, search for the journey code at scenic.com.au



Rhine, Main, Danube & Moselle

Melk Abbey, Austria

### Gems of the Danube

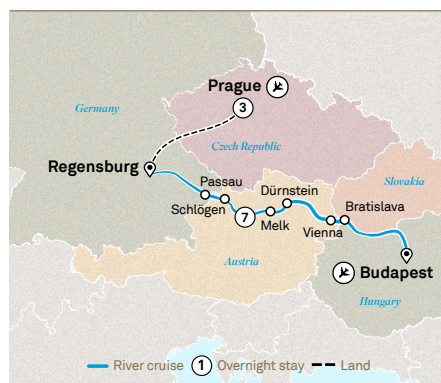
⌚ 8 Day river cruise



- Day 01 **Munich** > Regensburg
- Day 02 Regensburg
- Day 03 Passau > Schlägen
- Day 04 Melk > Dürnstein
- Day 05 Vienna
- Day 06 Bratislava
- Day 07-08 **Budapest**

### Gems of the Danube with Prague

⌚ 11 Day river cruise & city stay



- Day 01-03 **Prague**
- Day 04 Prague > Regensburg
- Day 05 Regensburg
- Day 06 Passau > Schlägen
- Day 07 Melk > Dürnstein
- Day 08 Vienna
- Day 09 Bratislava
- Day 10-11 **Budapest**

### Gems of the Danube with Bavaria

⌚ 12 Day river cruise & extension



- Day 01 **Munich**
- Day 02 Munich > Schwangau
- Day 03 Schwangau
- Day 04 Schwangau > Nuremberg
- Day 05 Nuremberg > Regensburg
- Day 06 Regensburg
- Day 07 Passau > Schlägen
- Day 08 Melk > Dürnstein
- Day 09 Vienna
- Day 10 Bratislava
- Day 11-12 **Budapest**

**Journey Code: NBU**

Munich > Budapest

2026 Mar 13\*\*<sup>†</sup>, 20<sup>†</sup>, 24<sup>\*</sup>, 31, Apr 07<sup>\*</sup>, 14, May 04<sup>\*</sup>, 11, 26<sup>\*</sup>, Jun 01<sup>\*</sup>, 02, 08, 15<sup>\*</sup>, 22, 29<sup>\*</sup>, Jul 04<sup>\*</sup>, 06, 11, 13<sup>\*</sup>, 20, 21<sup>\*</sup>, 27<sup>\*</sup>, 28, Aug 03, 05<sup>\*</sup>, 10<sup>\*</sup>, 12, 17, 24<sup>\*</sup>, 31, Sep 06<sup>\*</sup>, 07<sup>\*</sup>, 13, 14, 21<sup>\*</sup>, 28, Oct 05<sup>\*</sup>, 12, 19<sup>\*</sup>, 26

**2026 at 2025 Prices<sup>‡</sup>**

Standard Suite from \$5,945pp  
Balcony Suite from \$7,790pp

**Journey Code: PNB**

Prague > Budapest

2026 Mar 13\*\*<sup>†</sup>, 17<sup>†</sup>, 24<sup>\*</sup>, 28, Apr 07<sup>\*</sup>, 11, May 04<sup>\*</sup>, 08, 26<sup>\*</sup>, 30, Jun 01<sup>\*</sup>, 05, 15<sup>\*</sup>, 19, 29<sup>\*</sup>, Jul 03, 04<sup>\*</sup>, 08, 13<sup>\*</sup>, 17, 21<sup>\*</sup>, 25, 27<sup>\*</sup>, 31, Aug 05<sup>\*</sup>, 09, 10<sup>\*</sup>, 14, 24<sup>\*</sup>, 28, Sep 06<sup>\*</sup>, 07<sup>\*</sup>, 10, 11, 21<sup>\*</sup>, 25, Oct 05<sup>\*</sup>, 09, 19<sup>\*</sup>, 23

**2026 at 2025 Prices<sup>‡</sup>**

Standard Suite from \$7,495pp  
Balcony Suite from \$9,340pp

**Journey Code: BNB**

Munich > Budapest

2026 May 04<sup>\*</sup>, 26<sup>\*</sup>, 29, Jun 15<sup>\*</sup>, Jul 02, 07, Aug 13, 24<sup>\*</sup>, Sep 06<sup>\*</sup>, 09, 21<sup>\*</sup>, Oct 08

**Limited Time Early Access<sup>‡</sup>**

Standard Suite from \$8,805pp  
Balcony Suite from \$10,900pp

**For Super Earlybird Offers please refer to page 5**

The itineraries outlined are a guide only and may be amended for operational reasons. All prices are per person, twin share in AUD and include taxes and charges. <sup>‡</sup>2026 fares at 2025 prices are based on the applicable cruise fare where available and excludes port taxes and charges for new bookings made by 31 March 2025 or until sold out or withdrawn. <sup>†</sup>Limited Time Early Access refers to new itineraries where prices have not been held. These rates are subject to availability and change. All bookings require a non-refundable deposit of \$1,000 per person due within 7 days of booking. For Super Earlybird offers full payment is due 10 months prior to departure or if booking is made within 10 months of departure, full payment is due within 30 days of booking. <sup>^</sup>Cruise operates in both directions. <sup>\*</sup>Cruise operates in reverse. <sup>#</sup>Altered itinerary. Please refer to page 5 and visit scenic.com.au/river/offers for detail or visit scenic.com.au to search the journey code and view applicable offers per itinerary. All bookings are subject to Scenic full terms and conditions, refer to pages 52-57 or visit scenic.com.au/terms

To book call 138 128 | Visit [scenic.com.au](http://scenic.com.au) | Contact your local Travel Advisor

Rhine, Main, Danube & Moselle



Scenic Enrich – Palace of Rastatt, Germany

### Rhine Highlights

⌚ 8 Day river cruise



- Day 01-02 **Amsterdam**
- Day 03 **Cologne**
- Day 04 **Koblenz**
- Day 05 **Mannheim**
- Day 06 **Rastatt**
- Day 07 **Strasbourg**
- Day 08 **Basel > Zurich**

### Rhine Highlights with Switzerland

⌚ 12 Day river cruise & extension



- Day 01-02 **Amsterdam**
- Day 03 **Cologne**
- Day 04 **Koblenz**
- Day 05 **Mannheim**
- Day 06 **Rastatt**
- Day 07 **Strasbourg**
- Day 08 **Basel > Montreux**
- Day 09 **Montreux**
- Day 10 **Montreux > Bern**
- Day 11 **Bern > Lucerne > Zurich**
- Day 12 **Zurich**

### Rhine Highlights with London NEW

⌚ 11 Day river cruise & city stay



- Day 01 **Zurich > Basel**
- Day 02 **Strasbourg**
- Day 03 **Rastatt**
- Day 04 **Mannheim**
- Day 05 **Koblenz**
- Day 06 **Cologne**
- Day 07 **Amsterdam**
- Day 08 **Amsterdam > London**
- Day 09-11 **London**

**Journey Code: AMBC**

Amsterdam > Zurich

2026 Mar 09<sup>#</sup>, 16<sup>\*\*</sup>, 25, Apr 01<sup>\*</sup>, 06<sup>\*</sup>, 08, 29<sup>\*</sup>, May 06, 13<sup>\*</sup>, 20<sup>\*</sup>, 26, Jun 02<sup>\*</sup>, 03<sup>\*</sup>, 10<sup>\*</sup>, Jul 08<sup>\*</sup>, 15, 21, 22<sup>\*</sup>, 28<sup>\*</sup>, Aug 12<sup>\*</sup>, 19, 26<sup>\*</sup>, Sep 09<sup>\*</sup>, 16<sup>\*</sup>, 23, 30<sup>\*</sup>, Oct 07, 14<sup>\*</sup>, 21, 28<sup>\*</sup>

**2026 at 2025 Prices<sup>‡</sup>**

Standard Suite from \$5,245pp  
Balcony Suite from \$7,090pp

**Journey Code: AMSW**

Amsterdam > Zurich

2026 May 06, 16<sup>\*</sup>, 26, 30<sup>\*</sup>, Jul 15, 24<sup>\*</sup>, Aug 19, 22<sup>\*</sup>, Sep 23, Oct 07

**2026 at 2025 Prices<sup>‡</sup>**

Standard Suite from \$8,825pp  
Balcony Suite from \$10,670pp

**Journey Code: AZCL**

Zurich > London

2026 May 13

**Limited Time Early Access<sup>†</sup>**

Standard Suite from \$9,445pp  
Balcony Suite from \$11,290pp

**For Super Earlybird Offers please refer to page 5**

The itineraries outlined are a guide only and may be amended for operational reasons. All prices are per person, twin share in AUD and include taxes and charges. <sup>‡</sup>2026 fares at 2025 prices are based on the applicable cruise fare where available and excludes port taxes and charges for new bookings made by 31 March 2025 or until sold out or withdrawn. <sup>†</sup>Limited Time Early Access refers to new itineraries where prices have not been held. These rates are subject to availability and change. All bookings require a non-refundable deposit of \$1,000 per person due within 7 days of booking. For Super Earlybird offers full payment is due 10 months prior to departure or if booking is made within 10 months of departure, full payment is due within 30 days of booking. <sup>\*</sup>Cruise operates in both directions. <sup>‡</sup>Cruise operates in reverse. <sup>#</sup>Altered itinerary. Please refer to page 5 and visit scenic.com.au/river/offers for detail or visit scenic.com.au to search the journey code and view applicable offers per itinerary. All bookings are subject to Scenic full terms and conditions, refer to pages 52-57 or visit scenic.com.au/terms

To explore these itineraries further, search for the journey code at scenic.com.au



Rhine, Main, Danube & Moselle

Castles & Vineyards of the Rhine & Moselle **NEW**

🕒 8 Day river cruise



- Day 01 Frankfurt > Mainz
- Day 02 Koblenz
- Day 03 Bernkastel
- Day 04 Cochem
- Day 05 Rhine Gorge > Rudesheim
- Day 06 Rastatt
- Day 07 Breisach
- Day 08 Basel > Zurich

Castles & Vineyards of Rhine & Moselle with Switzerland **NEW**

🕒 12 Day river cruise & extension



- Day 01 Frankfurt > Mainz
- Day 02 Koblenz
- Day 03 Bernkastel
- Day 04 Cochem
- Day 05 Rhine Gorge > Rudesheim
- Day 06 Rastatt
- Day 07 Breisach
- Day 08 Basel > Montreux
- Day 09 Montreux
- Day 10 Bern
- Day 11 Bern > Lucerne > Zurich
- Day 12 Zurich

Windmills, Tulips & Belgian Delights

🕒 8 Day river cruise



- Day 01 Amsterdam
- Day 02 Dordrecht
- Day 03 Veere
- Day 04 Antwerp
- Day 05 Arnhem
- Day 06 Hoorn
- Day 07-08 Amsterdam

**Journey Code: GSMZ**

Frankfurt > Zurich

2026 Apr 15\*, 22, Jun 24\*, Jul 01, 29\*, Aug 05, Sep 30\*, Oct 07

**Limited Time Early Access<sup>†</sup>**

Standard Suite from \$5,695pp  
Balcony Suite from \$7,540pp

**Journey Code: GSMS**

Frankfurt > Zurich

2026 Apr 22, Jun 20\*, Jul 01, Aug 05, Sep 26\*

**Limited Time Early Access<sup>†</sup>**

Standard Suite from \$8,825pp  
Balcony Suite from \$10,670pp

**Journey Code: TUA**

Amsterdam > Amsterdam

2026 Apr 01, 07, 08, 13, 15, 22, 29

**2026 at 2025 Prices<sup>‡</sup>**

Standard Suite from \$5,995pp  
Balcony Suite from \$7,840pp

**For Super Earlybird Offers please refer to page 5**

The itineraries outlined are a guide only and may be amended for operational reasons. All prices are per person, twin share in AUD and include taxes and charges. ‡2026 fares at 2025 prices are based on the applicable cruise fare where available and excludes port taxes and charges for new bookings made by 31 March 2025 or until sold out or withdrawn. †Limited Time Early Access refers to new itineraries where prices have not been held. These rates are subject to availability and change. All bookings require a non-refundable deposit of \$1,000 per person due within 7 days of booking. For Super Earlybird offers full payment is due 10 months prior to departure or if booking is made within 10 months of departure, full payment is due within 30 days of booking. \*Cruise operates in both directions. ‡Cruise operates in reverse. #Altered itinerary. Please refer to page 5 and visit scenic.com.au/river/offers for detail or visit scenic.com.au to search the journey code and view applicable offers per itinerary. All bookings are subject to Scenic full terms and conditions, refer to pages 52-57 or visit scenic.com.au/terms

To book call 138 128 | Visit [scenic.com.au](http://scenic.com.au) | Contact your local Travel Advisor

Rhine, Main, Danube & Moselle



Bratislava, Slovakia

Lower Danube Discovery

⌚ 16 Day river cruise & city stay



- Day 01 **Budapest**
- Day 02 Bratislava
- Day 03 Bratislava > Vác
- Day 04 Budapest
- Day 05 Kalocsa > Mohacs
- Day 06 Mohacs > Osijek
- Day 07 Osijek
- Day 08 Novi Sad
- Day 09 Belgrade
- Day 10 Donji Milanovac > Iron Gates
- Day 11 Vidin
- Day 12 Rouse
- Day 13 Silistra
- Day 14 Cernavoda > Constanta
- Day 15-16 **Bucharest**

**Journey Code: VIBU**

Budapest > Bucharest  
2026 Mar 27, Apr 09\*, Sep 20, Oct 03\*

**2026 at 2025 Prices†**

Standard Suite from \$10,580pp  
Balcony Suite from \$14,785pp

Lower Danube Discovery with Vienna & Transylvania

⌚ 22 Day river cruise & extension



- Day 01-02 **Vienna**
- Day 03 Vienna > Budapest
- Day 04-05 Bratislava > Vác
- Day 06 Budapest
- Day 07-08 Kalocsa > Mohacs > Osijek
- Day 09 Osijek
- Day 10-11 Novi Sad > Belgrade
- Day 12 Donji Milanovac > Iron Gates
- Day 13 Vidin
- Day 14-15 Rouse > Silistra
- Day 16 Cernavoda > Constanta
- Day 17 Bucharest
- Day 18 Bucharest > Brasov
- Day 19 Brasov > Bran Castle > Brasov
- Day 20 Brasov > Sighisoara > Sibiu
- Day 21 Sibiu > Bucharest
- Day 22 **Bucharest**

**Journey Code: VVTR**

Vienna > Bucharest  
2026 Mar 25, Apr 05\*, Sep 18, 29\*

**2026 at 2025 Prices†**

Standard Suite from \$13,390pp  
Balcony Suite from \$17,595pp

Lower Danube Discovery with Turkey

⌚ 22 Day river cruise & extension



- Day 01 **Budapest**
- Day 02-03 Bratislava > Vác
- Day 04 Budapest
- Day 05-06 Kalocsa > Mohacs > Osijek
- Day 07 Osijek
- Day 08-09 Novi Sad > Belgrade
- Day 10 Donji Milanovac > Iron Gates
- Day 11 Vidin
- Day 12-13 Rouse > Silistra
- Day 14 Cernavoda > Constanta
- Day 15 Bucharest
- Day 16 Bucharest > Istanbul
- Day 17 Istanbul
- Day 18 Istanbul > Canakkale
- Day 19 Canakkale > Gallipoli > Canakkale
- Day 20 Canakkale > Istanbul
- Day 21-22 **Istanbul**

**Journey Code: VBIS**

Budapest > Istanbul  
2026 Mar 27, Sep 20, 27\*

**2026 at 2025 Prices†**

Standard Suite from \$14,595pp  
Balcony Suite from \$18,800pp

For Super Earlybird Offers please refer to page 5

The itineraries outlined are a guide only and may be amended for operational reasons. All prices are per person, twin share in AUD and include taxes and charges. †2026 fares at 2025 prices are based on the applicable cruise fare where available and excludes port taxes and charges for new bookings made by 31 March 2025 or until sold out or withdrawn. ‡Limited Time Early Access refers to new itineraries where prices have not been held. These rates are subject to availability and change. All bookings require a non-refundable deposit of \$1,000 per person due within 7 days of booking. For Super Earlybird offers full payment is due 10 months prior to departure or if booking is made within 10 months of departure, full payment is due within 30 days of booking. \*Cruise operates in both directions. †Cruise operates in reverse. ‡Altered itinerary. Please refer to page 5 and visit scenic.com.au/river/offers for detail or visit scenic.com.au to search the journey code and view applicable offers per itinerary. All bookings are subject to Scenic full terms and conditions, refer to pages 52-57 or visit scenic.com.au/terms

To explore these itineraries further, search for the journey code at scenic.com.au



Rhine, Main, Danube & Moselle

Hagia Sophia Grand Mosque, Istanbul, Turkey

### Eastern Europe & Balkans Unveiled

🕒 11 Day river cruise & city stay



- Day 01-03 **Budapest**
- Day 04 Mohacs
- Day 05 Osijek
- Day 06 Belgrade
- Day 07 Iron Gates Cruising
- Day 08 Svishtov > Rouse
- Day 09 Silistra
- Day 10 Giurgiu > Bucharest
- Day 11 **Bucharest**

### Eastern Europe & Balkans Unveiled with Turkey

🕒 17 Day river cruise & extension



- Day 01-03 **Budapest**
- Day 04 Mohacs
- Day 05 Osijek
- Day 06 Belgrade
- Day 07 Iron Gates Cruising
- Day 08 Svishtov > Rouse
- Day 09 Silistra
- Day 10 Giurgiu > Bucharest
- Day 11 Bucharest > Istanbul
- Day 12 Istanbul
- Day 13 Istanbul > Canakkale
- Day 14 Canakkale > Gallipoli > Canakkale
- Day 15 Canakkale > Istanbul
- Day 16-17 **Istanbul**

### Eastern Europe & Balkans Unveiled with Transylvania

🕒 15 Day river cruise & extension



- Day 01-03 **Budapest**
- Day 04 Mohacs
- Day 05 Osijek
- Day 06 Belgrade
- Day 07 Iron Gates Cruising
- Day 08 Svishtov > Rouse
- Day 09 Silistra
- Day 10 Giurgiu > Bucharest
- Day 11 Bucharest > Brasov
- Day 12 Brasov > Bran Castle > Brasov
- Day 13 Brasov > Sighisoara > Sibiu
- Day 14 Sibiu > Bucharest
- Day 15 **Bucharest**

**Journey Code: BUBC**

Budapest > Bucharest  
 2026 Apr 06, 14\*, 20, 28\*, May 16, 24\*,  
 Oct 11, 16, 19\*, 24\*

**2026 at 2025 Prices†**  
 Standard Suite from \$6,475pp  
 Balcony Suite from \$8,320pp

**Journey Code: BUIS**

Budapest > Istanbul  
 2026 Apr 08\*, 20, 22\*, May 16, Oct 11, 13\*

**2026 at 2025 Prices†**  
 Standard Suite from \$10,490pp  
 Balcony Suite from \$12,355pp

**Journey Code: BBTR**

Budapest > Bucharest  
 2026 Apr 06, 10\*, 20, 24\*, May 16, 20\*,  
 Oct 11, 15\*, 16, 20\*

**2026 at 2025 Prices†**  
 Standard Suite from \$8,075pp  
 Balcony Suite from \$9,920pp

*For Super Earlybird Offers please refer to page 5*

The itineraries outlined are a guide only and may be amended for operational reasons. All prices are per person, twin share in AUD and include taxes and charges. †2026 fares at 2025 prices are based on the applicable cruise fare where available and excludes port taxes and charges for new bookings made by 31 March 2025 or until sold out or withdrawn. ‡Limited Time Early Access refers to new itineraries where prices have not been held. These rates are subject to availability and change. All bookings require a non-refundable deposit of \$1,000 per person due within 7 days of booking. For Super Earlybird offers full payment is due 10 months prior to departure or if booking is made within 10 months of departure, full payment is due within 30 days of booking. ^Cruise operates in both directions. \*Cruise operates in reverse. #Altered itinerary. Please refer to page 5 and visit scenic.com.au/river/offers for detail or visit scenic.com.au to search the journey code and view applicable offers per itinerary. All bookings are subject to Scenic full terms and conditions, refer to pages 52-57 or visit scenic.com.au/terms

Festive Cruises



Prague, Czech Republic

### Christmas Markets with Prague & Paris

⌚ 21 Day river cruise & city stay



- Day 01-03 **Prague**
- Day 04 Prague > Budapest
- Day 05 Budapest
- Day 06-07 Vienna
- Day 08 Krems > Dürnstein
- Day 09 Brandstatt > Passau
- Day 10 Regensburg
- Day 11 Nuremberg
- Day 12 Bamberg
- Day 13 Würzburg
- Day 14 Wertheim > Miltenberg
- Day 15 Rudesheim
- Day 16 Cologne
- Day 17 Amsterdam
- Day 18 Amsterdam > Paris
- Day 19-21 **Paris**

### Christmas & New Year with Paris & Prague

⌚ 21 Day river cruise & city stay



- Day 01-03 **Paris**
- Day 04 Paris > Amsterdam
- Day 05 Amsterdam
- Day 06 Cologne
- Day 07 Scenic Sailing Rhine Gorge
- Day 08 Miltenberg > Wertheim
- Day 09 Würzburg
- Day 10 Bamberg
- Day 11 Nuremberg
- Day 12 Regensburg
- Day 13 Passau > Linz
- Day 14 Dürnstein
- Day 15 Vienna
- Day 16 Vienna > Budapest
- Day 18 Budapest > Prague
- Day 19-21 **Prague**

### Christmas & New Year

⌚ 15 Day river cruise



- Day 01-02 **Amsterdam**
- Day 03 Cologne
- Day 04 Scenic Sailing Rhine Gorge
- Day 05 Miltenberg > Wertheim
- Day 06 Würzburg
- Day 07 Bamberg
- Day 08 Nuremberg
- Day 09 Regensburg
- Day 10 Passau > Linz
- Day 11 Dürnstein
- Day 12-13 Vienna
- Day 14-15 **Budapest**

**Journey Code: CMPP**

Prague > Paris  
2026 Nov 21<sup>^</sup>, 22

**2026 at 2025 Prices<sup>‡</sup>**  
Standard Suite from \$14,880pp  
Balcony Suite from \$19,085pp

**Journey Code: CTPP**

Paris > Prague  
2026 Dec 19<sup>^</sup>, 20<sup>^</sup>

**2026 at 2025 Prices<sup>‡</sup>**  
Standard Suite from \$15,480pp  
Balcony Suite from \$19,685pp

**Journey Code: CHAA**

Amsterdam > Budapest  
2026 Dec 22<sup>^</sup>, 23<sup>#</sup>

**2026 at 2025 Prices<sup>‡</sup>**  
Standard Suite from \$10,995pp  
Balcony Suite from \$15,200pp

**For Super Earlybird Offers please refer to page 5**

The itineraries outlined are a guide only and may be amended for operational reasons. All prices are per person, twin share in AUD and include taxes and charges. <sup>‡</sup>2026 fares at 2025 prices are based on the applicable cruise fare where available and excludes port taxes and charges for new bookings made by 31 March 2025 or until sold out or withdrawn. <sup>†</sup>Limited Time Early Access refers to new itineraries where prices have not been held. These rates are subject to availability and change. All bookings require a non-refundable deposit of \$1,000 per person due within 7 days of booking. For Super Earlybird offers full payment is due 10 months prior to departure or if booking is made within 10 months of departure, full payment is due within 30 days of booking. <sup>^</sup>Cruise operates in both directions. <sup>#</sup>Cruise operates in reverse. <sup>#</sup>Altered itinerary. Please refer to page 5 and visit scenic.com.au/river/offers for detail or visit scenic.com.au to search the journey code and view applicable offers per itinerary. All bookings are subject to Scenic full terms and conditions, refer to pages 52-57 or visit scenic.com.au/terms

To explore these itineraries further, search for the journey code at scenic.com.au



Festive Cruises



Heidelberg, Germany

### Danube Christmas Markets with Prague

⌚ 11 Day river cruise & city stay



- Day 01-03 **Prague**
- Day 04 Prague > Regensburg
- Day 05 Regensburg
- Day 06 Passau > Schlögan
- Day 07 Melk > Dürnstein
- Day 08 Vienna
- Day 09 Bratislava
- Day 10-11 **Budapest**

### Rhine Christmas Markets with Switzerland

⌚ 12 Day river cruise & extension



- Day 01-02 **Amsterdam**
- Day 03 Cologne
- Day 04 Koblenz
- Day 05 Mannheim
- Day 06 Rastatt
- Day 07 Strasbourg
- Day 08 Basel > Montreux
- Day 09 Montreux
- Day 10 Montreux > Bern
- Day 11 Bern > Lucerne > Zurich
- Day 12 **Zurich**

### Rhine Christmas Markets

⌚ 8 Day river cruise



- Day 01-02 **Amsterdam**
- Day 03 Cologne
- Day 04 Koblenz
- Day 05 Mannheim
- Day 06 Rastatt
- Day 07 Strasbourg
- Day 08 Basel > Zurich

**Journey Code: XPNB**

Prague > Munich

2026 Nov 30\*, Dec 04, 08\*, 12, 14\*

**2026 at 2025 Prices†**

Standard Suite from \$7,295pp  
Balcony Suite from \$9,140pp

**Journey Code: XAMW**

Amsterdam > Zurich

2026 Dec 01, 04\*, 08, 09, 11\*, 12\*, 15

**2026 at 2025 Prices†**

Standard Suite from \$9,455pp  
Balcony Suite from \$11,300pp

**Journey Code: XAMB**

Amsterdam > Zurich

2026 Dec 01, 08^, 09, 15^, 16\*

**2026 at 2025 Prices†**

Standard Suite from \$5,945pp  
Balcony Suite from \$7,790pp

*For Super Earlybird Offers please refer to page 5*

The itineraries outlined are a guide only and may be amended for operational reasons. All prices are per person, twin share in AUD and include taxes and charges. †2026 fares at 2025 prices are based on the applicable cruise fare where available and excludes port taxes and charges for new bookings made by 31 March 2025 or until sold out or withdrawn. ‡Limited Time Early Access refers to new itineraries where prices have not been held. These rates are subject to availability and change. All bookings require a non-refundable deposit of \$1,000 per person due within 7 days of booking. For Super Earlybird offers full payment is due 10 months prior to departure or if booking is made within 10 months of departure, full payment is due within 30 days of booking. ^Cruise operates in both directions. \*Cruise operates in reverse. #Altered itinerary. Please refer to page 5 and visit scenic.com.au/river/offers for detail or visit scenic.com.au to search the journey code and view applicable offers per itinerary. All bookings are subject to Scenic full terms and conditions, refer to pages 52-57 or visit scenic.com.au/terms

# *France River Cruising*



Discover France's culinary and cultural wonders, from Bordeaux to Paris, as you visit charming villages along the historic Seine and savour exquisite flavours in the south of France. You'll be inspired and delighted at every turn.



Scenic Diamond, Bordeaux, France

France



Arles, France

### Spectacular South of France

🕒 11 Day river cruise



- Day 01 **Lyon**
- Day 02 Lyon > Chalons-sur-Saône
- Day 03 Tournus
- Day 04 Tournon
- Day 05 Tournon > Avignon
- Day 06 Avignon
- Day 07 Arles
- Day 08 Viviers
- Day 09-11 **Lyon**

### Spectacular South of France with Paris

🕒 13 Day river cruise & city stay



- Day 01-02 **Paris**
- Day 03 Paris > Lyon
- Day 04 Lyon > Chalons-sur-Saône
- Day 05 Tournus
- Day 06 Tournon
- Day 07 Tournon > Avignon
- Day 08 Avignon
- Day 09 Arles
- Day 10 Viviers
- Day 11-13 **Lyon**

### Idyllic Rhône

🕒 8 Day river cruise



- Day 01-02 **Lyon**
- Day 03 Mâcon
- Day 04 Vienne
- Day 05 Viviers > Avignon
- Day 06 Avignon
- Day 07 Arles
- Day 08 Arles > Nice

**Journey Code: FRAC**

Lyon > Lyon

2026 Mar 27, Apr 06, 16, May 10, 20, 30, Jun 09, 19, 29, Jul 23, Aug 02, 12, Sep 05, 15, Oct 09, 19, 29

**2026 at 2025 Prices†**

Standard Suite from \$8,195pp  
Balcony Suite from \$11,740pp

**Journey Code: PFRC**

Paris > Lyon

2026 May 08, 28, Jun 17, Jul 21, Sep 03

**2026 at 2025 Prices†**

Standard Suite from \$11,075pp  
Balcony Suite from \$14,620pp

**Journey Code: FCCC**

Lyon > Nice

2026 Apr 26, May 03\*, Jul 16\*, Aug 22, 29\*, Sep 25, Oct 02\*

**2026 at 2025 Prices†**

Standard Suite from \$6,795pp  
Balcony Suite from \$8,935pp

**For Super Earlybird Offers please refer to page 5**

The itineraries outlined are a guide only and may be amended for operational reasons. All prices are per person, twin share in AUD and include taxes and charges. †2026 fares at 2025 prices are based on the applicable cruise fare where available and excludes port taxes and charges for new bookings made by 31 March 2025 or until sold out or withdrawn. ‡Limited Time Early Access refers to new itineraries where prices have not been held. These rates are subject to availability and change. All bookings require a non-refundable deposit of \$1,000 per person due within 7 days of booking. For Super Earlybird offers full payment is due 10 months prior to departure or if booking is made within 10 months of departure, full payment is due within 30 days of booking. Scenic Culinaire capacity is limited. ^Cruise operates in both directions. \*Cruise operates in reverse. #Altered itinerary. Please refer to page 5 and visit scenic.com.au/river/offers for detail or visit scenic.com.au to search the journey code and view applicable offers per itinerary. All bookings are subject to Scenic full terms and conditions, refer to pages 52-57 or visit scenic.com.au/terms

To explore these itineraries further, search for the journey code at scenic.com.au

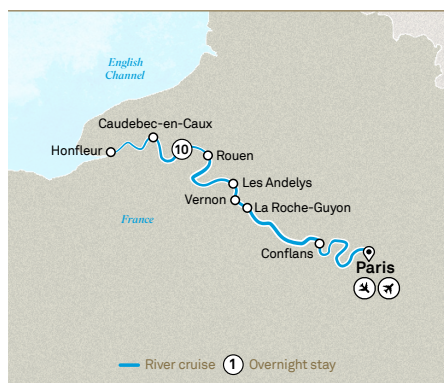
France



Château de Vaux-le-Vicomte, France

### Normandy & Gems of the Seine

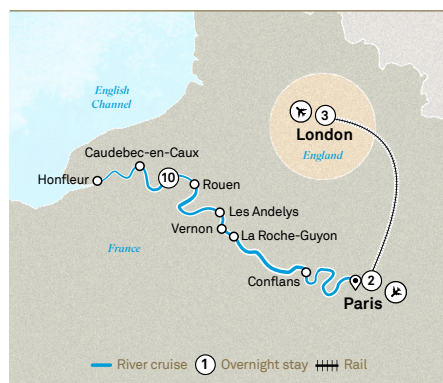
🕒 11 Day river cruise



- Day 01 **Paris**
- Day 02 Les Andelys
- Day 03-04 Rouen
- Day 05 Rouen > Honfleur
- Day 06 Honfleur
- Day 07 Honfleur > Caudebec-en-Caux
- Day 08 Vernon > La Roche Guyon
- Day 09 Conflans > Paris
- Day 10-11 **Paris**

### Normandy & Gems of the Seine with Paris & London **NEW**

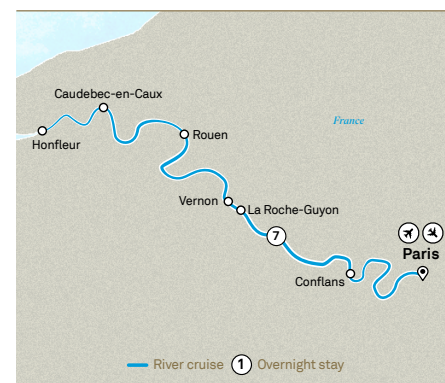
🕒 16 Day river cruise & city stay



- Day 01-03 **Paris**
- Day 04 Les Andelys
- Day 05-06 Rouen
- Day 07 Rouen > Honfleur
- Day 08 Honfleur
- Day 09 Honfleur > Caudebec-en-Caux
- Day 10 Vernon > La Roche Guyon
- Day 11 Conflans > Paris
- Day 12 Paris
- Day 13 Paris > London
- Day 14-16 **London**

### Highlights of Normandy & the Seine

🕒 8 Day river cruise



- Day 01 **Paris**
- Day 02 Conflans
- Day 03 Rouen
- Day 04 Honfleur
- Day 05 Caudebec-en-Caux
- Day 06 Vernon > La Roche-Guyon
- Day 07-08 **Paris**

**Journey Code: SEI**

Paris > Paris

2026 Apr 13, 23, May 10, 20, 30, Jun 09, 19, Jul 13, 30, Aug 16, 26, Sep 05, 15, Oct 02, 19

**2026 at 2025 Prices\***

Standard Suite from \$8,395pp  
Balcony Suite from \$11,940pp

**Journey Code: PRCL**

Paris > London

2026 May 08, Jun 17, Sep 03, 30

**2026 at 2025 Prices\***

Standard Suite from \$15,425pp  
Balcony Suite from \$19,770pp

**Journey Code: SENE**

Paris > Paris

2026 Mar 30, Apr 06, May 03, Jun 29, Jul 06, 23, Aug 09, Sep 25, Oct 12, 29

**2026 at 2025 Prices\***

Standard Suite from \$7,145pp  
Balcony Suite from \$9,285pp

**For Super Earlybird Offers please refer to page 5**

The itineraries outlined are a guide only and may be amended for operational reasons. All prices are per person, twin share in AUD and include taxes and charges. †2026 fares at 2025 prices are based on the applicable cruise fare where available and excludes port taxes and charges for new bookings made by 31 March 2025 or until sold out or withdrawn. ‡Limited Time Early Access refers to new itineraries where prices have not been held. These rates are subject to availability and change. All bookings require a non-refundable deposit of \$1,000 per person due within 7 days of booking. For Super Earlybird offers full payment is due 10 months prior to departure or if booking is made within 10 months of departure, full payment is due within 30 days of booking. \*Cruise operates in both directions. †Cruise operates in reverse. #Altered itinerary. Please refer to page 5 and visit scenic.com.au/river/offers for detail or visit scenic.com.au to search the journey code and view applicable offers per itinerary. All bookings are subject to Scenic full terms and conditions, refer to pages 52-57 or visit scenic.com.au/terms

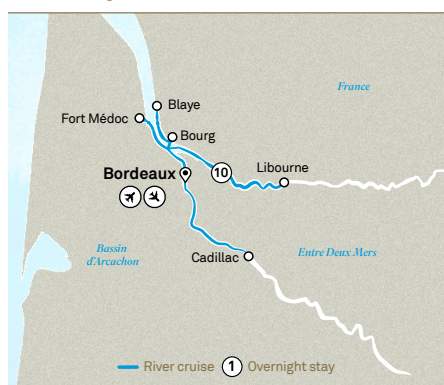
## France



Saint-Émilion, France

## Beautiful Bordeaux

🕒 11 Day river cruise



- Day 01 **Bordeaux**
- Day 02 Bordeaux > Libourne
- Day 03 Libourne > Fort Médoc
- Day 04 Fort Médoc
- Day 05 Fort Médoc > Cadillac
- Day 06 Cadillac > Bordeaux
- Day 07 Bordeaux
- Day 08 Bordeaux > Bourg
- Day 09 Bourg
- Day 10 Blaye > Bordeaux
- Day 11 **Bordeaux**

### Journey Code: BOD

Bordeaux > Bordeaux

2026 Apr 13, 23, May 10, 20, 30, Jun 09, 19, Jul 13, 23, Aug 09, 26, Sep 05, 15, Oct 02, 12, 29

### 2026 at 2025 Prices<sup>‡</sup>

Standard Suite from \$8,195pp  
Balcony Suite from \$11,740pp

## Beautiful Bordeaux with Paris & Madrid

🕒 16 Day river cruise & city stay



- Day 01-02 **Paris**
- Day 03 Paris > Bordeaux
- Day 04 Bordeaux > Libourne
- Day 05 Libourne > Fort Médoc
- Day 06 Fort Médoc
- Day 07 Fort Médoc > Cadillac
- Day 08 Cadillac > Bordeaux
- Day 09 Bordeaux
- Day 10 Bordeaux > Bourg
- Day 11 Bourg
- Day 12 Blaye > Bordeaux
- Day 13 Bordeaux > Madrid
- Day 14-16 **Madrid**

### Journey Code: PBOM

Paris > Madrid

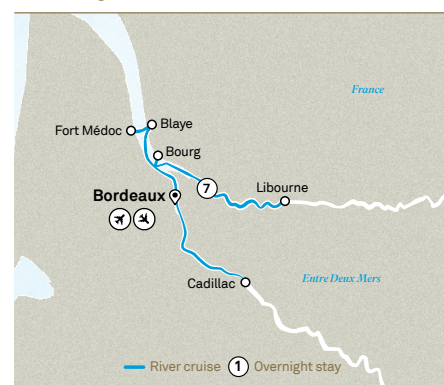
2026 May 08, Sep 03

### 2026 at 2025 Prices<sup>‡</sup>

Standard Suite from \$14,470pp  
Balcony Suite from \$18,015pp

## Bordeaux Affair

🕒 8 Day river cruise



- Day 01 **Bordeaux**
- Day 02 Libourne
- Day 03 Libourne > Blaye
- Day 04 Blaye > Fort Médoc
- Day 05 Fort Médoc > Bourg
- Day 06 Cadillac > Bordeaux
- Day 07-08 **Bordeaux**

### Journey Code: BORD

Bordeaux > Bordeaux

2026 Mar 30, Apr 06, May 03, Jun 29, Jul 06, Aug 02, 19, Sep 25, Oct 22

### 2026 at 2025 Prices<sup>‡</sup>

Standard Suite from \$6,595pp  
Balcony Suite from \$8,735pp

*For Super Earlybird Offers please refer to page 5*

The itineraries outlined are a guide only and may be amended for operational reasons. All prices are per person, twin share in AUD and include taxes and charges. <sup>‡</sup>2026 fares at 2025 prices are based on the applicable cruise fare where available and excludes port taxes and charges for new bookings made by 31 March 2025 or until sold out or withdrawn. <sup>†</sup>Limited Time Early Access refers to new itineraries where prices have not been held. These rates are subject to availability and change. All bookings require a non-refundable deposit of \$1,000 per person due within 7 days of booking. For Super Earlybird offers full payment is due 10 months prior to departure or if booking is made within 10 months of departure, full payment is due within 30 days of booking. Please note: The Gironde, Dordogne and Garonne waterways are part of a tidal river system which results in changing water levels in the region and based on tides the itinerary will be amended or modified as required. Scenic Culinaire capacity is limited. Please refer to page 5 and visit [scenic.com.au/river/offers](http://scenic.com.au/river/offers) for detail or visit [scenic.com.au](http://scenic.com.au) to search the journey code and view applicable offers per itinerary. All bookings are subject to Scenic full terms and conditions, refer to pages 52-57 or visit [scenic.com.au/terms](http://scenic.com.au/terms)

To explore these itineraries further, search for the journey code at [scenic.com.au](http://scenic.com.au)



*Château d'Agassac, France*  
*N 44° 58' W 0° 36'*



# *Portugal River Cruising*





Experience the heart and soul of Portugal by cruising through the Douro Valley. From world-famous port wine to vibrant painted towns, uncover a distinctive culture where authentic traditions and friendly people create an unforgettable journey.



Scenic Azure, Porto, Portugal

*All-Inclusive Ultra-Luxury River Cruising*

Portugal



Scenic Azure, Douro Valley, Portugal

### Unforgettable Douro

🕒 11 Day river cruise



- Day 01 **Porto**
- Day 02 Porto > Entre-os-Rios
- Day 03 Entre-os-Rios > Regua
- Day 04 Regua
- Day 05 Regua > Vega de Terron
- Day 06 Vega de Terron > Pocinho
- Day 07 Pocinho > Pinhão
- Day 08 Pinhão
- Day 09 Pinhão > Porto
- Day 10-11 **Porto**

### Unforgettable Douro with Lisbon & Madrid

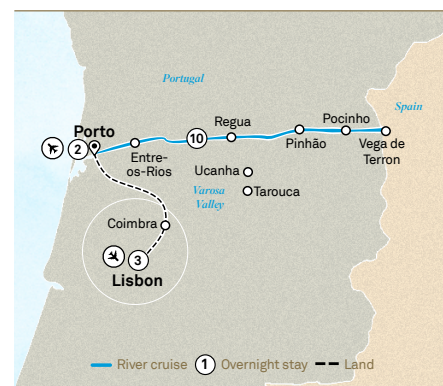
🕒 17 Day river cruise & city stay



- Day 01-03 **Lisbon**
- Day 04 Lisbon > Porto
- Day 05 Porto > Entre-os-Rios
- Day 06 Entre-os-Rios > Regua
- Day 07 Regua
- Day 08 Regua > Vega de Terron
- Day 09 Vega de Terron > Pocinho
- Day 10 Pocinho > Pinhão
- Day 11 Pinhão
- Day 12 Pinhão > Porto
- Day 13 Porto
- Day 14 Porto > Madrid
- Day 15-17 **Madrid**

### Unforgettable Douro with Lisbon & Porto

🕒 16 Day river cruise & city stay



- Day 01-03 **Lisbon**
- Day 04 Lisbon > Porto
- Day 05 Porto > Entre-os-Rios
- Day 06 Entre-os-Rios > Regua
- Day 07 Regua
- Day 08 Regua > Vega de Terron
- Day 09 Vega de Terron > Pocinho
- Day 10 Pocinho > Pinhão
- Day 11 Pinhão
- Day 12 Pinhão > Porto
- Day 13-16 **Porto**

**Journey Code: DOUR**

Porto > Porto

2026 Apr 13, 30, May 10, 20, Jun 06, 16, Jul 03, 20, Aug 06, 16, 26, Sep 05, 15, Oct 02, 19, 29

**2026 at 2025 Prices†**

Standard Suite from \$9,195pp  
Balcony Suite from \$12,605pp

**Journey Code: LDOM**

Lisbon > Madrid

2026 Apr 10, May 07, Jun 13, 30, Aug 03, 13, Sep 02, Oct 16

**2026 at 2025 Prices†**

Standard Suite from \$13,375pp  
Balcony Suite from \$16,785pp

**Journey Code: LDOP**

Lisbon > Porto

2026 Apr 27, May 17, Jun 03, Jul 17, Aug 23, Sep 12, 29, Oct 26

**2026 at 2025 Prices†**

Standard Suite from \$12,160pp  
Balcony Suite from \$15,570pp

*For Super Earlybird Offers please refer to page 5*

The itineraries outlined are a guide only and may be amended for operational reasons. All prices are per person, twin share in AUD and include taxes and charges. †2026 fares at 2025 prices are based on the applicable cruise fare where available and excludes port taxes and charges for new bookings made by 31 March 2025 or until sold out or withdrawn. ‡Limited Time Early Access refers to new itineraries where prices have not been held. These rates are subject to availability and change. All bookings require a non-refundable deposit of \$1,000 per person due within 7 days of booking. For Super Earlybird offers full payment is due 10 months prior to departure or if booking is made within 10 months of departure, full payment is due within 30 days of booking. \*Cruise operates in both directions. †Cruise operates in reverse. #Altered itinerary. Please refer to page 5 and visit scenic.com.au/river/offers for detail or visit scenic.com.au to search the journey code and view applicable offers per itinerary. All bookings are subject to Scenic full terms and conditions, refer to pages 52-57 or visit scenic.com.au/terms

To explore these itineraries further, search for the journey code at scenic.com.au



Portugal

Scenic Enrich – São Francisco Church, Portugal

## Delightful Douro

⌚ 8 Day river cruise



- Day 01 **Porto**
- Day 02 Porto > Pinhão
- Day 03 Pinhão > Barca d'Alva
- Day 04 Barca d'Alva > Pocinho
- Day 05 Pocinho > Regua
- Day 06 Regua > Porto
- Day 07-08 **Porto**

## Delightful Douro with Lisbon & Madrid

⌚ 14 Day river cruise & city stay



- Day 01-03 **Lisbon**
- Day 04 Lisbon > Porto
- Day 05 Porto > Pinhão
- Day 06 Pinhão > Barca d'Alva
- Day 07 Barca d'Alva > Pocinho
- Day 08 Pocinho > Regua
- Day 09 Regua > Porto
- Day 10 Porto
- Day 11 Porto > Madrid
- Day 12-14 **Madrid**

## Delightful Douro with Porto NEW

⌚ 10 Day river cruise & city stay



- Day 01 **Porto**
- Day 02 Porto > Pinhão
- Day 03 Pinhão > Barca d'Alva
- Day 04 Barca d'Alva > Pocinho
- Day 05 Pocinho > Regua
- Day 06 Regua > Porto
- Day 07-10 **Porto**

### Journey Code: DOUS

Porto > Porto

2026 Mar 30, Apr 06, 23, May 30, Jun 26, Jul 13, 30, Sep 25, Oct 12, Nov 08

#### 2026 at 2025 Prices<sup>‡</sup>

Standard Suite from \$7,295pp  
Balcony Suite from \$9,225pp

### Journey Code: LIDM

Lisbon > Madrid

2026 Mar 27, Apr 03, 20, May 27, Jun 23, Jul 10, 27, Sep 22, Oct 09, Nov 05

#### 2026 at 2025 Prices<sup>‡</sup>

Standard Suite from \$10,985pp  
Balcony Suite from \$12,915pp

### Journey Code: DOUP

Porto > Porto

2026 Apr 06, 23, May 30, Jun 26, Jul 13, 30

#### 2026 at 2025 Prices<sup>‡</sup>

Standard Suite from \$8,645pp  
Balcony Suite from \$10,575pp

*For Super Earlybird Offers please refer to page 5*

The itineraries outlined are a guide only and may be amended for operational reasons. All prices are per person, twin share in AUD and include taxes and charges. <sup>‡</sup>2026 fares at 2025 prices are based on the applicable cruise fare where available and excludes port taxes and charges for new bookings made by 31 March 2025 or until sold out or withdrawn. <sup>†</sup>Limited Time Early Access refers to new itineraries where prices have not been held. These rates are subject to availability and change. All bookings require a non-refundable deposit of \$1,000 per person due within 7 days of booking. For Super Earlybird offers full payment is due 10 months prior to departure or if booking is made within 10 months of departure, full payment is due within 30 days of booking. <sup>^</sup>Cruise operates in both directions. <sup>\*</sup>Cruise operates in reverse. <sup>#</sup>Altered itinerary. Please refer to page 5 and visit [scenic.com.au/river/offers](https://scenic.com.au/river/offers) for detail or visit [scenic.com.au](https://scenic.com.au) to search the journey code and view applicable offers per itinerary. All bookings are subject to Scenic full terms and conditions, refer to pages 52-57 or visit [scenic.com.au/terms](https://scenic.com.au/terms)

# Handcrafted 5-star luxury land journeys

## All-Inclusive Experiences

Enjoy an unrivalled range of Scenic Freechoice and Scenic Enrich experiences included in your journey, creating truly immersive discoveries.

Delight in dinner at a Swiss chalet as the Alphorn Academy showcases their talent, listen as a local historian captivates you with tales of the city's history or discover the ancient art of Falconry. These are just some of the experiences as remarkable as the destination itself.

## Scenic Special Stays

Unwind and recharge in spectacular accommodation with our selection of Scenic Special Stays, hotels notable for their location, character and heritage.

From Cameron House overlooking Loch Lomond to the historic Great Scotland Yard Hotel and the iconic Fairmont Le Montreux Palace on Lake Geneva, you can look forward to remarkable accommodation throughout your journey.

## Land journey inclusions

- Smaller group journeys with a maximum of 28 guests per departure
- Once-in-a-lifetime Scenic Enrich experiences
- Scenic Freechoice – a range of included activities to immerse you in the destination
- 5-star accommodation throughout your journey
- Scenic Special Stays at unique accommodations
- One beverage of your choice (wine, beer or soft drink) with every included dinner
- Handpicked expert Tour Directors and knowledgeable local guides
- A local Europe-based operations team for support during your journey
- Return airport transfers in Europe\*
- Porterage throughout, all tipping and gratuities

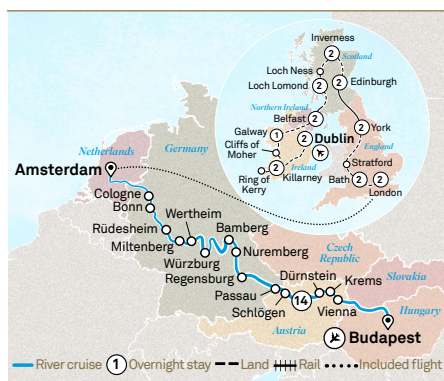




Gornergrat Railway, Zermatt, Switzerland

## Jewels of Europe with Majestic Britain & Ireland

⌘ 34 Day river cruise & land journey



- Day 01-02 **Dublin**
- Day 03 Dublin > Killarney
- Day 04 Ring of Kerry
- Day 05-07 Killarney > Galway > Belfast
- Day 08 Belfast > Loch Lomond
- Day 09 Loch Lomond
- Day 10 Loch Lomond > Inverness
- Day 11 Inverness
- Day 12 Inverness > Edinburgh
- Day 13-17 Edinburgh > York > Bath
- Day 18 Bath > London
- Day 19 London
- Day 20 London > Amsterdam
- Day 20-34 **Jewels of Europe cruise**  
For full river cruise itinerary, see page 16

### Journey Code: BAIC

Dublin > Budapest

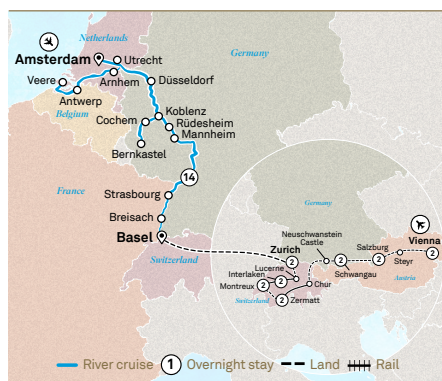
2026 May 01, 21, Jun 12, Jul 10, Aug 07\*, 13\*, 27, Sep 04

### 2026 at 2025 Prices†

Standard Suite from \$26,840pp  
Balcony Suite from \$31,045pp

## Romantic Rhine & Moselle with Grand Alpine

⌘ 29 Day river cruise & land journey



- Day 01-15 **Romantic Rhine & Moselle cruise**  
For full river cruise itinerary, see page 15
- Day 16 Zurich
- Day 17 Zurich > Lucerne > Interlaken
- Day 18 Interlaken
- Day 19 Interlaken > Montreux
- Day 20 Montreux
- Day 21 Montreux > Zermatt
- Day 22 Zermatt
- Day 23 Zermatt > Schwangau
- Day 24 Schwangau
- Day 25-26 Salzburg
- Day 27 Salzburg > Vienna
- Day 28-29 **Vienna**

### Journey Code: SSAB

Amsterdam > Vienna

2026 May 06, Jun 17\*, Jul 15, 29^, Aug 26, Sep 30\*

### 2026 at 2025 Prices†

Standard Suite from \$25,490pp  
Balcony Suite from \$29,695pp

## Eastern Europe Explorer with Jewels of Europe

⌘ 24 Day river cruise & land journey



- Day 01-02 **Prague**
- Day 03 Prague > Dresden > Berlin
- Day 04-05 Berlin
- Day 06 Berlin > Warsaw
- Day 07 Warsaw
- Day 08 Warsaw > Krakow
- Day 09 Krakow
- Day 10 Krakow > Budapest
- Day 10-24 **Jewels of Europe cruise**  
For full river cruise itinerary, see page 16

### Journey Code: EESC

Prague > Amsterdam

2026 May 25, Jun 08, 28, Jul 20, Aug 09, Sep 06

### 2026 at 2025 Prices†

Standard Suite from \$17,820pp  
Balcony Suite from \$22,025pp

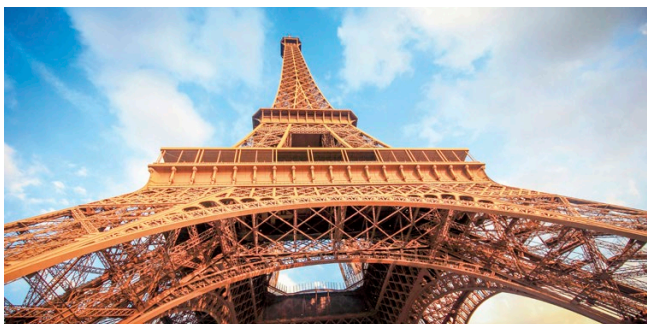
For Super Earlybird Offers please refer to page 5

The itineraries outlined are a guide only and may be amended for operational reasons. All prices are per person, twin share in AUD and include taxes and charges. †2026 fares at 2025 prices are based on the applicable cruise fare where available and excludes port taxes and charges for new bookings made by 31 March 2025 or until sold out or withdrawn. ‡Limited Time Early Access refers to new itineraries where prices have not been held. These rates are subject to availability and change. All bookings require a non-refundable deposit of \$1,000 per person due within 7 days of booking. For Super Earlybird offers full payment is due 10 months prior to departure or if booking is made within 10 months of departure, full payment is due within 30 days of booking. +Includes Edinburgh Military Tattoo. ^Journey operates in both directions. \*Journey operates in reverse. Please refer to page 5 and visit scenic.com.au/offers for detail or visit scenic.com.au to search the journey code and view applicable offers per itinerary. All bookings are subject to Scenic full terms and conditions, refer to pages 52-57 or visit scenic.com.au/terms

To book call 138 128 | Visit [scenic.com.au](http://scenic.com.au) | Contact your local Travel Advisor

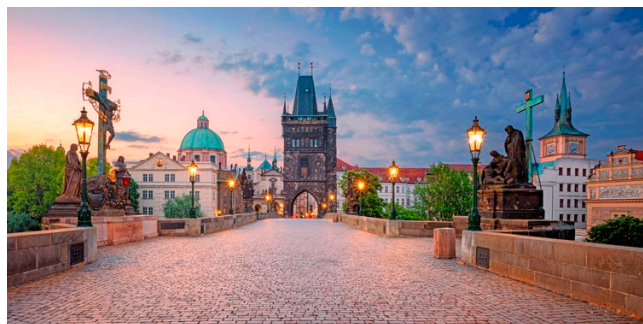
# City Stays & Extensions

## Paris



Spend 2 or 3 nights soaking in the romantic allure of Paris. Wander cobblestoned streets in Montmartre or partake in a city tour, viewing many famous sites.

## Prague



Spend 3 nights in Prague in all its gothic glory. Discover Prague Castle, join a local for a tasting of the national ale or pay your respects at Terezin.

## Switzerland



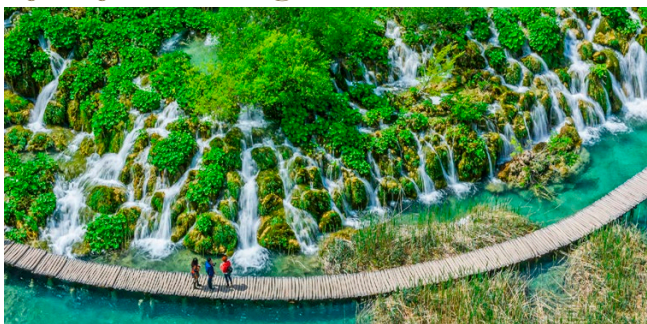
Explore Switzerland across 4 nights, from the soaring Swiss Alps to Lake Geneva, as you journey from Zurich to Montreux, before a delicious lunch and cheese-making demonstration.

## Vienna



Your 2 nights in Vienna gives you time to explore this charming city. See the Ringstrasse, Opera House and St Stephen's Cathedral as you discover the beauty of this city.

## Ljubljana & Zagreb



This 4 night extension offers glimpses into the natural beauty of Slovenia and Croatia, from the towering snow-capped mountains to the emerald green lakes of Plitvice National Park.

## Turkey



The history of Turkey is unveiled across 6 nights. Be fascinated by the city of Troy, visit the Gallipoli Peninsula and see the wonders of fascinating Istanbul including world-famous Hagia Sophia, Topkapi Palace and more.

Scenic's selection of escorted city stays and extensions effortlessly combines with your river cruise. We handle all the planning, allowing you to get to the heart of the fascinating destinations in one seamless journey.

## Transylvania



Few myths are as iconic as the legend of Dracula, inspired by Bran Castle. Wander historic landmarks throughout the Transylvania triangle over 4 nights.

## London **NEW**



Discover iconic attractions and hidden gems on our new 3 night London city stay. Spend time in this most famous of cities.

## Porto **NEW**



Situated on the banks of the Douro River, the romantic city of Porto is home to magnificent churches, large green spaces and one of Portugal's most famous exports, Port.

## Best of Bavaria **NEW**



Known for its picturesque landscapes and centuries old traditions, be immersed in this stunning region. Visit Neuschwanstein Castle and explore Munich and Nuremberg.

## Lisbon



Portugal's pretty capital is a revelation and perfectly reflects Portuguese culture. Combine this 3 night city stay with a river cruise along the Douro Valley for the journey of a lifetime.

## Madrid



Charismatic Madrid offers something for everyone across 3 nights. Perhaps sit back and enjoy tapas and sangria in one of Plaza Mayor's restaurants or admire the Royal Palace.

\*Tours operate with a minimum numbers and must be booked in conjunction with a Scenic European river cruise. City extensions operate with a maximum group size of up to 44 guests. Please enquire for more information for connecting cruises.

# Europe your way cruise combinations



Passau, Germany

## Rhine, Moselle & Danube with Bavaria **NEW**



Discover the charming castles and valleys of the Rhine and Moselle, be immersed in Bavaria and then cruise along the Danube.

**20 Day Basel > Budapest**

Jun 24, Sep 30

**Journey Code: GBMB**

## Europe's Heartland



A classic journey on the Rhine, Moselle and Seine rivers, sailing through the heart of Europe.

**25 Day Paris > Amsterdam**

May 06\*, 10, Aug 12\*, 16

**Journey Code: SEAM**



Uncover the distinctive cultures throughout different regions by combining some of our most popular river cruises, creating your ultimate European holiday.

## Jewels of Europe & Gems of the Seine



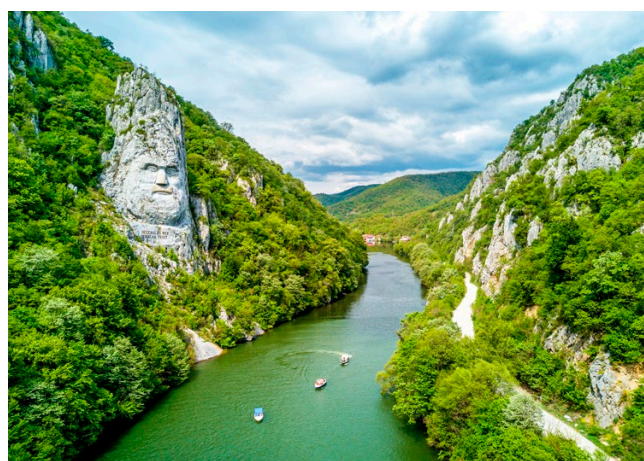
The trip of a lifetime along some of Europe's most famous rivers, with spectacular landscapes and fascinating history.

**25 Day Amsterdam > Paris**

May 06<sup>^</sup>, 10<sup>^</sup>, 30<sup>#</sup>, Aug 12<sup>^</sup>, 16<sup>^</sup>, Sep 01<sup>^</sup>, 05<sup>^</sup>

**Journey Code: STSE**

## North Sea to the Black Sea



Take in the full sweep of European history, from west to east, on this ultimate European River cruise.

**23 Day Amsterdam > Bucharest**

Mar 25, Apr 08, 14\*, 28\*, Sep 29, Oct 19\*

**Journey Code: ABBU**

## Wondrous Europe



Cruise through southern France before your journey along the Rhine and Moselle rivers.

**25 Day Amsterdam > Lyon**

Mar 23, May 06, 10\*, Jul 29, Aug 02<sup>#</sup>

**Journey Code: ABFC**

## France & Douro Masterpiece



Experience a trip as wondrous as it is diverse, where ancient cathedrals and vine-lined riverbanks await.

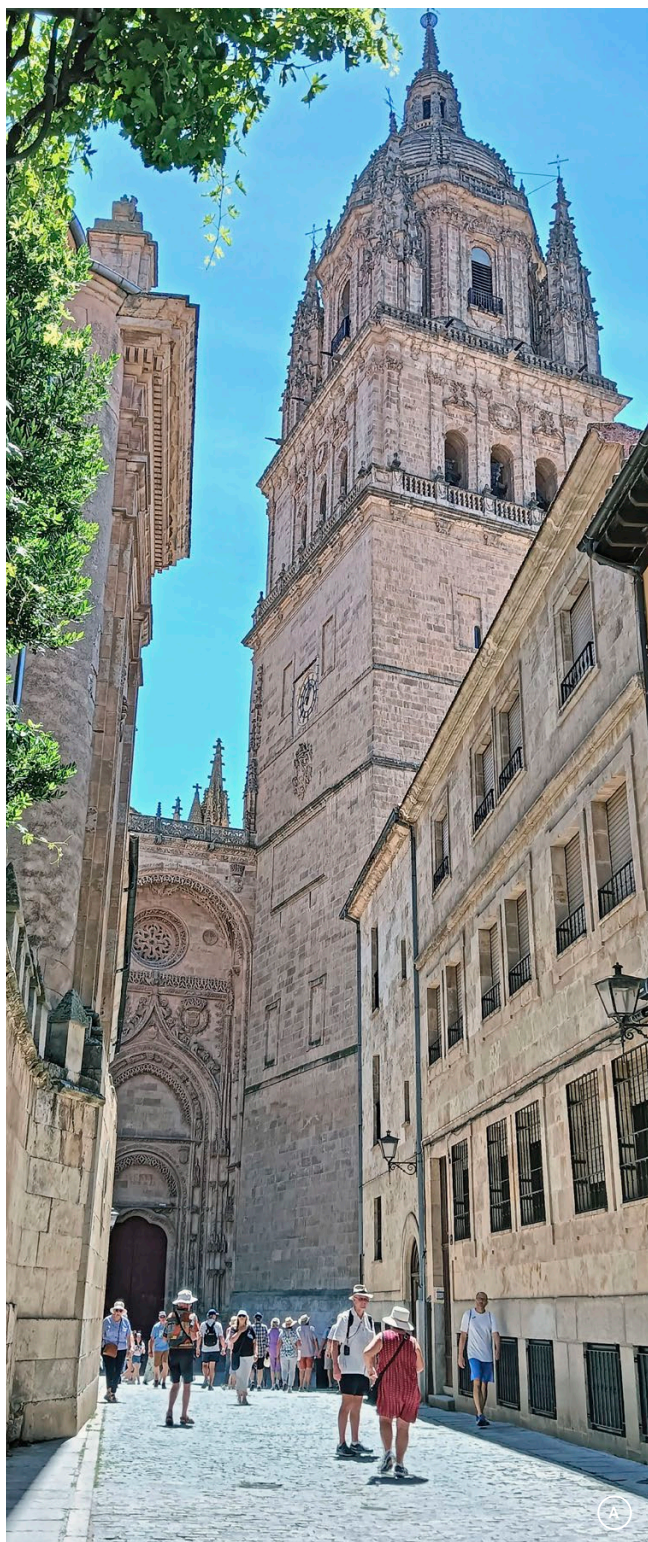
**31 Day Paris > Porto**

Apr 30\*, May 10\*, 20\*, Aug 16<sup>^</sup>, 26<sup>^</sup>

**Journey Code: SEBD**

\*Itinerary operates in reverse. ^Cruise operates in both directions. #Altered itinerary.

# Europe your way cruise combinations



A Salamanca, Spain

## Normandy & Gems of the Seine & Spectacular South of France



Treat yourself to a comprehensive itinerary that takes in two of France's most celebrated waterways.

**21 Day Paris > Lyon**

May 10<sup>^</sup>, 20<sup>^</sup>, 30<sup>^</sup>, Jun 09<sup>^</sup>, 19, Jul 13, Aug 26, Sep 05<sup>^</sup>, Oct 09<sup>^</sup>, 19

**Journey Code: SEFR**

## Normandy & Gems of the Seine & Unforgettable Douro



Appreciate perfectly preserved Portugal and visit the home of Impressionist art along the Seine.

**21 Day Paris > Porto**

Apr 13<sup>\*</sup>, 30<sup>\*</sup>, May 10<sup>^</sup>, 20<sup>\*</sup>, Jul 03<sup>\*</sup>, 20<sup>\*</sup>, Aug 06<sup>\*</sup>, 16<sup>^</sup>, 26<sup>^</sup>, Sep 05<sup>^</sup>, Oct 19

**Journey Code: SEDO**

To explore these itineraries further, search for the journey code at [scenic.com.au](http://scenic.com.au)

## Beautiful Bordeaux & Unforgettable Douro



With a shared passion for exquisite wines, it's the hidden gems that set Portugal and Bordeaux apart.

### 21 Day Bordeaux > Porto

Apr 13\*, 30\*, May 10^, 20\*, Jul 03\*, Aug 16\*, 26^, Sep 05^, Oct 02\*, 19\*

Journey Code: BODO

## Spectacular South of France & Unforgettable Douro



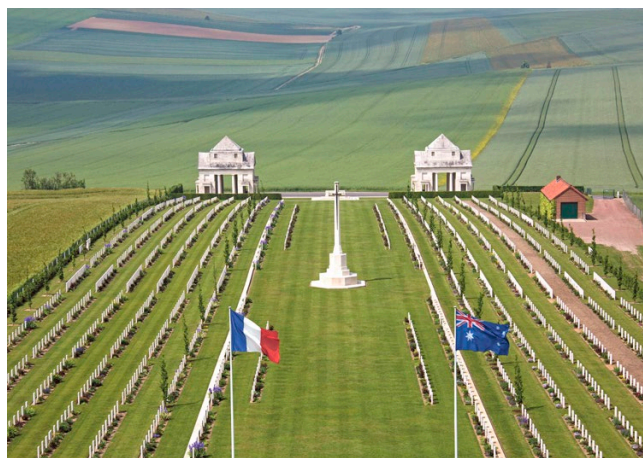
The South of France and Portugal are renowned for their love of local produce, fine wines and remarkable architecture.

### 21 Day Porto > Lyon

Apr 30, May 10^, 20, Aug 26, Sep 05^, Oct 09\*, 19

Journey Code: DOFR

## Normandy & Gems of the Seine & Beautiful Bordeaux



Be immersed in iconic history along the Seine and sample renowned wines in Bordeaux.

### 21 Day Paris > Bordeaux

Apr 13^, May 10^, 20^, 30^, Jun 09^, Jul 13, 30, Aug 16, 26^, Sep 05^, Oct 02, 19

Journey Code: SEBO

## Iconic France



France is known for its gastronomy. Sample renowned produce in Bordeaux and the south of France.

### 21 Day Bordeaux > Lyon

May 10^, 20^, 30^, Jun 09^, 19, Jul 13, 23, Aug 26, Sep 05^, Oct 19\*

Journey Code: BOFR

\*Itinerary operates in reverse. ^Cruise operates in both directions. #Altered itinerary.

# Ultimate European Journeys

## New for 2026

### Ultimate Western Europe & Scandinavian Journey

From the fairytale castles of the Rhine River to the splendid heart of Paris, the beauty and romance of Bordeaux and the charming character of Scandinavia. This spectacular 60-night river cruise, land tour and Scenic Eclipse ocean voyage provides a deep dive into the best this corner of the world has to offer.

You'll visit rolling vineyards, cosmopolitan capitals, sombre battlefields, bustling ports and quaint villages, all with Scenic's Nth Degree experience.



**61 day journey departing 24 June 2026** NEW  
**Basel > Copenhagen Journey Code: CF2C**



- A Scenic Sapphire, Avignon, France
- B Neuschwanstein Castle, Germany
- C Stockholm, Sweden

*Join your 8 day river cruise in Basel*

- Day 01 Basel, Switzerland
- Day 02 Breisach, Germany
- Day 03 Rastatt
- Day 04 Rudesheim
- Day 05 Cochem
- Day 06 Bernkastel
- Day 07 Koblenz

*Fly from Frankfurt to Munich to join your Best of Bavaria land journey*

- Day 08 Mainz > Frankfurt > Munich
- Day 09 Munich
- Day 10 Munich > Schwangau
- Day 11 Schwangau
- Day 12 Schwangau > Nuremberg

*Transfer to your Scenic Space-Ship in Regensburg for your 8 day river cruise*

- Day 13 Nuremberg > Regensburg
- Day 14 Regensburg
- Day 15 Passau > Schloggen, Austria
- Day 16 Melk > Durnstein
- Day 17 Vienna
- Day 18 Bratislava, Slovakia
- Day 19 Budapest, Hungary

*Disembark in Budapest and fly to Paris for your 11 day river cruise*

- Day 20 Budapest > Paris, France
- Day 21 Les Andelys
- Day 22-23 Rouen
- Day 24-25 Honfleur
- Day 26 Honfleur > Caudebec
- Day 27 Vernon
- Day 28 Conflans > Paris
- Day 29 Paris

*Fly to from Paris to Bordeaux for your 11 day river cruise*

- Day 30 Paris > Bordeaux
- Day 31 Bordeaux > Saint-Emlion

- Day 32 Libourne > Fort Medoc
- Day 33 Fort Medoc
- Day 34 Fort Medoc > Cadillac
- Day 35 Cadillac
- Day 36 Bordeaux
- Day 37 Bordeaux > Bourg
- Day 38 Bourg
- Day 39 Blaye > Bordeaux

*Fly from Bordeaux to Lyon for your 11 day river cruise*

- Day 40 Bordeaux > Lyon
- Day 41 Lyon > Chalon-sur-Saone
- Day 42 Tournus
- Day 43 Tournon
- Day 44-45 Avignon
- Day 46 Arles
- Day 47 Viviers
- Day 48-49 Lyon

*Fly from Lyon to Stockholm to board Scenic Eclipse II for your 12 day ocean voyage*

- Day 50 Lyon > Stockholm, Sweden
- Day 51 Stockholm
- Day 52 Tallinn, Estonia
- Day 53 Helsinki, Finland
- Day 54 Riga, Latvia
- Day 55 Riga
- Day 56 Visby, Gotland Island, Sweden
- Day 57 Kalmar
- Day 58 Ronne, Bornholm Island, Denmark
- Day 59 Warnemunde, Germany
- Day 60 Nyborg, Denmark
- Day 61 Copenhagen

Your journey ends in Copenhagen leaving you with memories from the trip of a lifetime.

To explore this itinerary, pricing and offers search for CF2C at [scenic.com.au](http://scenic.com.au)

Experience more in 2026 with our Ultimate European journeys. Only with Scenic can you combine luxury travel by river, ocean and land in one seamless itinerary. Redefine the way you explore Europe with the most indulgent, immersive, and enriching travel experiences.



### Ultimate European Odyssey

The most renowned rivers of Europe beckon on this 54-night journey from Paris to Prague. Sail the Seine from the heart of Paris and immerse yourself in the history and culture of Northern France.

Embark on a week-long ocean voyage through the French and Italian Rivas. Indulge in the idyllic Bordeaux region and the vibrant culture of Portugal before you make your way to Amsterdam for a river cruise on the Rhine, Main and Danube. Discover the jewels of Europe from the Netherlands to Hungary ending your journey with three nights in Prague.

**55 day journey departing 13 April 2026** **NEW**  
**Paris > Prague Journey Code: CF2P**

*Join your 11 day river cruise in Paris*

- Day 01 Paris, France
- Day 02 Les Andelys
- Day 03-04 Rouen
- Day 05-06 Honfleur
- Day 07 Honfleur > Caudebec-en-Caux
- Day 08 Vernon
- Day 09 Conflans > Paris
- Day 10-11 Paris

*Fly to Nice to board Scenic Eclipse for your 8 day ocean voyage*

- Day 12 Paris > Nice
- Day 13 Nice
- Day 14 Portofino, Italy
- Day 15 Livorno
- Day 16 Calvi, Corsica, France
- Day 17 Cannes
- Day 18 Marseille
- Day 19 Mahón, Spain

*Fly from Barcelona to Bordeaux. After one night in Bordeaux, board your Scenic Space-Ship for your 8 day river cruise*

- Day 20 Barcelona > Bordeaux, France
- Day 21 Bordeaux
- Day 22 Bordeaux > Libourne
- Day 23 Libourne > Blaye
- Day 24 Blaye > Fort Médoc
- Day 25 Fort Médoc > Bourg
- Day 26 Bordeaux > Cadillac > Bordeaux
- Day 27 Bordeaux

*Fly from Bordeaux to Porto for your 11 day river cruise*

- Day 28 Bordeaux > Porto, Portugal
- Day 29 Porto > Entre-os-Rios
- Day 30 Entre-os-Rios > Regua
- Day 31 Regua
- Day 32 Regua > Vega de Terron
- Day 33 Vega de Terron
- Day 34 Pocinho > Pinhão
- Day 35 Pinhão
- Day 36 Pinhão > Porto
- Day 37 Porto

*Fly from Porto to Amsterdam for your 15 day river cruise followed by your 3 night stay in Prague*

- Day 38 Porto > Amsterdam, Netherlands
- Day 39 Amsterdam
- Day 40 Cologne, Germany > Bonn
- Day 41 Rhine Gorge > Rudesheim
- Day 42 Miltenberg > Wertheim
- Day 43 Würzburg
- Day 44 Bamberg
- Day 45 Nuremberg
- Day 46 Regensburg
- Day 47 Passau > Schlägen, Austria
- Day 48 Dürnstein > Krems
- Day 49-50 Vienna
- Day 51 Budapest, Hungary
- Day 52 Budapest > Prague, Czech Republic
- Day 53-55 Prague

Your journey ends in Prague leaving you with memories from the trip of a lifetime.



A Portofino, Italy  
 B Scenic Eclipse, Corsica  
 C Budapest, Hungary

To explore this itinerary, pricing and offers search for CF2P at [scenic.com.au](https://www.scenic.com.au)

# *The most all-inclusive cruise on the Mekong River*



Scenic Spirit

**A** Pool Deck, Scenic Spirit   **B** Scenic Enrich - Angkor Temple Gala Dinner, Cambodia

*For more information visit [scenic.com.au](http://scenic.com.au)*

Explore the storied waterways of South East Asia, where lush landscapes and mesmerising cultures have drawn generations of curious travellers. Experience a true journey of wonder through Vietnam, Cambodia and Laos, all in Scenic's 5-star, truly all-inclusive ultra-luxury.

## A seamless river and land journey

Discover ancient kingdoms, stories and traditions. The heart of your travel experience will be spent on your home away from home on board Scenic Spirit on the Mekong River, which seamlessly couples with luxury land journeys through the treasures of Vietnam, Cambodia and Laos.



## Exclusive experiences

A highlight in Siem Reap before or after your Mekong cruise is the mystical-themed Gala Dinner, exclusive for only up to 68 Scenic guests. Held at Prasat Kravan, a 10th century Angkor Temple in Siem Reap, you'll enjoy a three-course meal of traditional Khmer cuisine with free-flowing drinks and a magical performance by Apsara dancers.



## Truly all-inclusive ultra-luxury river cruising

- 5-star boutique ship experience for up to 68 guests
- One-bedroom balcony suites with separate living room, walk-in wardrobe and Scenic Sun Lounge
- Butler service for all guests
- All meals on board with up to four dining venues, from casual to fine dining
- Complimentary international beverages^ all day, every day on board Scenic Spirit
- Wellness Centre and fitness area
- Self-service laundry facilities
- Expert Scenic Cruise and Tour Directors and local guides
- Complimentary Wi-Fi
- Small group land journeys for up to 25 guests
- Scenic Enrich – exclusive, once-in-a-lifetime events
- Scenic Freechoice included excursions to personalise your journey
- Scenic Sunset Drinks – evening drinks in remarkable locations
- Scenic Special Stays – iconic hotels remarkable for their location and heritage
- All internal flights and rail
- Return airport transfers in Asia
- Tipping and gratuities included on board and onshore
- Scenic staffed local offices in region to support your cruise and land touring journey



Scan to order our South East Asia River Cruising brochure  
or visit [scenic.com.au/brochures](https://scenic.com.au/brochures)



^All on board beverages are included except for a very small number of fine and vintage wines, Champagnes and spirits on the 7/9 night river cruise. In the event of a deviation some services and inclusions may not be provided in line with these depictions. Please see page 52-57 for more details.



Rice field, Vietnam

# Luxury Mekong & Temple Discovery Cruise

🕒 11 Day Cruise & Land Journey 📍 Ho Chi Minh City > Siem Reap



## Mekong magnificence

From the flavour and culture of Vietnam to the colour and history of Cambodia, your senses will be charmed as you cruise along the Mekong. Spend time in Siem Reap, home to the magnificent temples of Angkor that still today whisper secrets of the once-imposing Khmer Kingdom.

- Day 01 Ho Chi Minh City > 7 Night Mekong Cruise
- Day 02 Cai Be > Sa Dec
- Day 03 Tan Chau
- Day 04 Tan Chau > Phnom Penh
- Day 05 Phnom Penh > Oudong
- Day 06 Silk Island > Angkor Ban
- Day 07 Wat Hanchey > Kampong Cham
- Day 08 Mekong Cruise > Siem Reap
- Day 09 Siem Reap
- Day 10 Siem Reap
- Day 11 Siem Reap

*This journey also offers a 9-night cruise option. Please see website for details.*



### 2026 DEPARTURE DATES

Journey code: VIMR.1  
7 night cruise date

2026  
Jan 13, 27, Feb 10, 24, Mar 10, 24, Apr 07, 21  
May 05, 19, Sep 29, Oct 13, Oct 27, Nov 10, 24

### Super Earlybird Offer: Save up to \$1,500 per person\*

For more details, further offers and itineraries in South East Asia, including 2025 departure dates, please visit [scenic.com.au/river/south-east-asia](http://scenic.com.au/river/south-east-asia)

This itinerary is a guide only. While every effort is made to adhere to the planned itinerary, changes in river conditions, ad hoc local government regulations or local festivities may require journey modifications. Please refer to the terms and conditions on pages 52-57 for further information.

\*Super Earlybird Offer: Save up to \$1,500 on select 7 night cruise or up to \$3,500 on a 9-night cruise, subject to availability. Full payment is due 10 months prior to departure. If booking within 10 months of departure, if the Super Earlybird is available, full payment is due within 30 days of booking. Offers are subject to availability. Deposit per person (required within 7 days of booking): \$1,000. All prices are per person, twin share in AUD and include taxes and charges. Single supplement on application. For offer terms and conditions please visit [scenic.com.au/river/offers](http://scenic.com.au/river/offers) and for booking terms and conditions please refer to [scenic.com.au/terms](http://scenic.com.au/terms).

To explore this itinerary further, search for VIMR at [scenic.com.au](http://scenic.com.au)





Temple Gala Dinner, Siem Reap, Cambodia

# Treasures of the Mekong

🕒 13 Day Cruise & Land Journey 📍 Siem Reap > Ho Chi Minh City



## A waterway unlike any other

Marvel at the 12th century masterpiece of Angkor Wat, before embarking on your cruise. Along the way take in the wonders of Phnom Penh, discover the historic towns of Tan Chau and Sa Dec before winding your way to lively Ho Chi Minh City.

- Day 01 Siem Reap
- Day 02 Siem Reap
- Day 03 Siem Reap
- Day 04 Siem Reap > 7 Night Mekong Cruise
- Day 05 Wat Hanchey > Kampong Cham
- Day 06 Angkor Ban > Silk Island > Phnom Penh
- Day 07 Phnom Penh
- Day 08 Phnom Penh > Tan Chau
- Day 09 Tan Chau
- Day 10 Sa Dec > Cai Be
- Day 11 Mekong Cruise > Ho Chi Minh City
- Day 12 Ho Chi Minh City
- Day 13 Ho Chi Minh City

*This journey also offers a 9-night cruise option. Please see website for details.*

### 2026 DEPARTURE DATES

Journey code: VIMS.2  
7 night cruise date

2026  
Jan 03, 17, 31 Feb 14, 28, Mar 14, 28, Apr 11, 25  
May 09, Sep 19, Oct 03, 17, 31 Nov 14, 28

**Super Earlybird Offer: Save up to \$2,500 per person\***

For more details, further offers and itineraries in South East Asia, including 2025 departure dates, please visit [scenic.com.au/river/south-east-asia](http://scenic.com.au/river/south-east-asia)

This itinerary is a guide only. While every effort is made to adhere to the planned itinerary, changes in river conditions, ad hoc local government regulations or local festivities may require journey modifications. Please refer to the terms and conditions on pages 52-57 for further information.

+Super Earlybird Offer: Save up to \$2,500pp on select 7 night cruise or up to \$4,500pp on a 9-night cruise, subject to availability. Full payment is due 10 months prior to departure. If booking within 10 months of departure, if the Super Earlybird is available, full payment is due within 30 days of booking. Offers are subject to availability. Deposit per person (required within 7 days of booking): \$1,000. All prices are per person, twin share in AUD and include taxes and charges. Single supplement on application. For offer terms and conditions please visit [scenic.com.au/river/offers](http://scenic.com.au/river/offers) and for booking terms and conditions please visit [scenic.com.au/terms](http://scenic.com.au/terms).



To explore this itinerary further, search for VIMS at [scenic.com.au](http://scenic.com.au)

### Canada & Alaska

Discover the untamed beauty of Alaska and marvel at Canada's Rocky Mountains. On our land journeys, enjoy stays at Fairmont Hotels and Rocky Mountaineer GoldLeaf service for a luxurious experience.

**Ocean Cruising** 2 countries  
**Land Journeys** 2 countries



### USA & The Caribbean

Access small ports in Bermuda and The Bahamas, cross the legendary Panama Canal and explore USA's East Coast, including New York.

**Ocean Cruising** 8 countries  
**Land Journeys** 1 country



### South America

From beautifully preserved colonial cities to ancient vibrant cultures, majestic fjords and alluring beaches, see what South America has to offer.

**Ocean Cruising** 7 countries  
**Land Journeys** 1 country



### The Arctic & Greenland

From Iceland to Svalbard and beyond the Arctic Circle, discover stunning landscapes and abundant wildlife.

**Ocean Cruising**  
2 countries



### Antarctic Peninsula

Explore the Peninsula's highlights or travel further into the Weddell Sea in search of the emperor penguin. Be one of few to have gone beyond the Antarctic Circle or explore the teeming wildlife of South Georgia and the Falkland Islands' history.

**Ocean Cruising** 1 continent






*For more information visit  
[scenic.com.au](http://scenic.com.au) or your  
local Travel advisor*

# Discover the world of Scenic

For more than 38 years, Scenic has set the standard for worldwide exploration. Our ultra-luxury cruises and handcrafted land journeys will take you to the heart of each destination's culture, history, and natural wonders across all seven continents.

Whether you are cruising along the majestic waterways of Europe, South East Asia or the Pacific, or discovering the pristine landscapes of the polar regions, every moment is designed to create stories for life.

- 
Ultra-Luxury River Cruising
- 
Ultra-Luxury Ocean Cruising
- 
Luxury Land Journeys

## Europe

Whether on a land journey, ocean or river cruise, explore major capitals like London, Lisbon and Paris to places off the beaten track. Discover medieval cities, idyllic villages and stunning coastal and country landscapes.

- River Cruising** 15 countries
- Ocean Cruising** 17 countries
- Land Journeys** 11 countries



## South East & North Asia

Explore ancient traditions and futuristic cities of Japan and Korea or the stunning nature and cultures of South East Asia.

- Ocean Cruising** 7 countries
- River Cruising** 2 countries
- Land Journeys** 4 countries



## Australia & Oceania

Experience ultra-luxury cruising in Western Australia, the Top End and the Great Barrier Reef. Explore Norfolk Island and Tasmania on a handcrafted land journey.

- Ocean Cruising** 11 countries
- Land Journeys** 1 country



## Africa & Middle East

From Kenya's savannahs to Egypt's Nile wonders, South Africa, Tanzania and Zimbabwe's wildlife, be immersed in a remarkable journey.

- Ocean Cruising** 2 countries
- Land Journeys** 6 countries



## East Antarctica & Ross Sea

Explore this seldom-visited region from Hobart and New Zealand. Limited to a few guests annually. Witness abundant wildlife and stunning landscapes.

- Ocean Cruising** 1 continent



## New Zealand

Cruise the stunning Milford Sound, experience Queenstown's allure, and discover Hobbiton's charm.

- Ocean Cruising** 1 country
- Land Journeys** 1 country



## Terms & Conditions

### 1. Contract

**1.1** These terms and conditions (Conditions) form the basis of the contract between You and Scenic Tours Pty Ltd (ABN 85 002 715 602) (We, Us or Our) (Contract). It is important that You read the Contract carefully to ensure that You understand Your rights and obligations. Certain clauses in these Conditions may apply only to either the Scenic Brand or the Emerald Brand Journeys (as applicable). If a clause only applies to the Scenic Brand or the Emerald Brand (as applicable), this is expressly stated in the relevant clause. Your Contract may also include additional terms and conditions applicable to a special offer or promotion, and/or, depending on Your Journey, Destination Specific Terms.

**1.2** If Your Journey includes a Cruise, You will also be subject to the Passenger Ticket Terms and Conditions, being the conditions of carriage for the Cruise Vessel, which are available on our Website and otherwise on request to Us.

**1.3** You confirm Your understanding and acceptance of these Conditions and the Contract by paying Your Booking Deposit or otherwise paying any part of Your Journey Price. If You do not understand and accept these Conditions and the terms of the Contract, You should not make any payment to Us and in this case, We will cancel Your Booking in accordance with clause 3.3 of these Conditions.

**1.4** If You make a Booking on behalf of any other person, You represent to Us that You have their authority to make the Booking on their behalf and to legally bind them to the terms of the Contract, including these Conditions. Each reference to You, Your, Guest or Passenger means the person who makes the Booking and each other person covered by the Booking.

**1.5** Your Itinerary does not form part of the Contract. It may be necessary for us to make changes to Your Itinerary and we do not guarantee any Itinerary that is provided to You.

**1.6** We may amend our published Conditions from time to time. If We amend the published Conditions, We will publish the amended version on Our Website. We will also provide the current version of the Conditions to You upon request. You will be bound by the current version of the Conditions at the time You make Your Booking.

**1.7** You acknowledge that in order to participate in Your Journey, You may need to sign up to and comply with the terms and conditions of Service Providers, and where reasonably practicable, We will provide such terms and conditions to you prior to or during Your Journey.

#### 1.8 Travel Insurance:

(a) All travel involves risks. We strongly recommend You take out comprehensive travel insurance with a reputable insurance company to cover You against risks associated with Your Journey, including cover for loss of luggage, medical expenses and costs and expenses incurred due to cancellations, delays or other disruptions.

(b) If you do not obtain adequate travel insurance, You accept that You may not be able to recover costs in relation to Your Journey Price in the event of cancellation or material changes made to Your Journey or Itinerary.

### 2. Meaning of Words

In these Conditions, the following words and expressions have the following meanings:

(a) Booking means the booking You have made with Us for the Journey.

(b) Booking Deposit means a booking deposit in an amount which We have notified to You before You made Your Booking.

(c) Captain means the captain of a Cruise Vessel.

(d) Cruise means a cruise constituting or forming part of Your Journey.

(e) Cruise Director means any person designated by Us as the cruise director for any Cruise.

(f) Cruise Vessel means a vessel used for the purpose of providing a Cruise.

(g) Customer Service Contact Address means the details for contacting Us set out in clause 13.7 of these Conditions.

(h) Departure Time means the earlier of:

(i) the beginning of the boarding process of any vehicle (such as the embarkation of a Cruise Vessel) that is part of Your Journey; and

(ii) You checking into any accommodation that is part of Your Journey.

(i) Destination Specific Terms means terms and conditions specific to a particular Journey, as published in the Journey Brochure or on Our Website for the relevant Journey, or, where applicable, set out in clause 14 of these Conditions.

(j) Documentation has the meaning given to it in clause 6.6.

(k) Drone means an unmanned aerial vehicle or UAV, being an aircraft of any size that operates without a pilot on board.

(l) Emerald Brand means the "Emerald Cruises" brand, associated with the Emerald Website.

(m) Emerald Website means the website at <https://emeraldcruises.com.au>.

(n) Discovery Team Leader means any person designated by Us as the discovery team leader for any Cruise.

(o) Force Majeure Event means any act of God, war, terrorism, fire, flood or any other extreme weather conditions or act of nature, loss of power, epidemics, pandemics or declared public health emergencies, industrial disputes, slow-downs or other strike activities, political unrest, riots or civil disturbances, prohibitions or acts of Federal, State, Territory, or Local government or, quasi-governments bodies or other authorities (including, in each case, their duly constituted or appointed agents), inability to obtain any necessary licence or consent and delays caused by sub-contractors, suppliers or other third parties (including telecommunications carriers), material shortages, any border closure by any country or any relevant Government authority.

(p) Future Travel Credit means a credit that may be issued by Us to You and which may be redeemed against a future booking in accordance with clause 9 of these Conditions.

(q) Guest Contact Details means Your contact details which You have provided to Us at the time of making Your Booking, as amended by any written notice You may provide to Us from time to time in accordance with clause 13.10 of these Conditions.

(r) Itinerary means the itinerary for Your Journey issued by Us, subject to any amendments made by Us from time to time in accordance with this Contract.

(s) Journey means a journey or journey package offered or provided by Us.

(t) Journey Brochure means the brochure for Your Journey published by Us in hard copy or electronically, as amended from time to time by notification on Our Website.

(u) Journey Departure Date means the scheduled departure date for the Journey set out in Your Itinerary.

(v) Journey Price means the total amount payable by You for the Journey. It includes the Booking Deposit.

(w) Minor Change has the meaning given to it in clause 5.4.

(x) Operator means the owner or operator of a Cruise Vessel, who is a separate legal entity and business, whether or not related to Us.

(y) Personal Information means information about You and any other person for whom You make a Booking, including a name, address, phone number and other contact details, details of next of kin, passport number, credit or debit card details, and information about health, medical needs, dietary requirements and any disabilities or other special requirements.

(z) Scenic Brand means the "Scenic" brand, associated with the Scenic Website.

(aa) Scenic Website means the website at [scenic.com.au](http://scenic.com.au).

(bb) Service Provider means any contractor engaged by Us to provide a Journey or any part of a Journey, and includes an Operator. Service Providers are separate legal entities that may be related to Us.

(cc) Tour Director means any person designated by Us as the Tour Director for Your Itinerary.

(dd) Validity Period means in respect of a Journey Brochure, the validity period stated in that brochure.

(ee) Website means the Scenic Website or the Emerald Website (as applicable).

(ff) Your Journey means the Journey You have booked with Us, as outlined in Your Itinerary and (if applicable) as amended.

### 3 Booking and Payment

**3.1** You may make a Booking directly with Us or through a travel advisor / agent. Your Booking will be confirmed only when We have received:

(a) Your Booking Deposit; or

(b) if Your Booking is made 90/ 120 (see clause 4.9 (a)) days or less before the Journey Departure Date, the Journey Price and all other amounts payable under the Contract.

**3.2** Except as indicated in clause 3.8, We will notify You of the Journey Price and provide You with Your Itinerary at the time of making Your Booking.

**3.3** You must pay Your Booking Deposit within 7 days after making Your Booking. If We do not receive Your Booking Deposit within 7 days after You make Your Booking, We will automatically cancel Your Booking without further notice to You.

**3.4** The Booking deposit amount is 20% of the Journey price for Ocean Cruises and AUD 1,000 for all other Journeys.

**3.5** If You have made Your Booking through a travel agent, Your travel agent should forward Your Booking Deposit or Journey Price to Us on Your behalf. However, payments by You to Your travel agent are not considered to be payments by You to Us. We will consider payment has been received by Us only when We receive payment from Your travel agent.

**3.6** Any accommodation, sightseeing or flights We book for You separately to those stated in Your Itinerary are not included in the Booking Deposit or Journey Price, and You must pay both the deposit and full costs for such additional services separately to the Booking Deposit and Journey Price at the time which We notify to You at or before You make Your Booking. Any requests for such additional services will not be processed until Your Booking Deposit is paid in full.

**3.7** For some special offers, We may require payment of a further deposit before the balance of the Journey Price is due. We will notify You of any such requirement before You complete Your Booking and will confirm the payment details when We confirm Your Booking. You must make payment by the date notified by Us.

**3.8** Except as required by law or as otherwise provided in the Contract, Booking Deposits are not refundable and are not transferable to other Journeys or Bookings.

**3.9** If You make Your Booking within 90/ 120 (see clause 4.9 (a)) days of Your Journey Departure Date, You must pay Your Booking Deposit before We can process Your Booking and confirm Your Journey Price. Your Booking is not confirmed until You have paid the Journey Price. We will notify You of the Journey Price promptly after We have calculated it. If You do not confirm Your acceptance of the Journey Price in writing within 7 days of receipt of notification from Us, You will be deemed to have rejected the Journey Price. If You notify Us that You have rejected the Journey Price or if You are deemed to have rejected the Journey Price, We will cancel Your Booking and refund Your Booking Deposit. If You accept the Journey Price, You must pay the outstanding Journey Price within 72 hours of Us notifying You of the Journey Price, or We will cancel Your Booking and retain Your Booking Deposit.

**3.10** If clause 3.8 does not apply, You must pay to Us the balance of the Journey Price and all other amounts payable under the Contract no later than 90/ 120 (see clause 4.9 (a)) days before the Journey Departure Date.

**3.11** If You wish to change any incidental component of Your Booking, such as any pre or post Journey accommodation or add-ons, You must contact Us. We may accept or reject Your request. If We accept, We will notify You of additional costs (if any) resulting from the change (such as additional cost associated with

additional days of accommodation requested by You or resulting from a change to Your flights that You requested).

- (a) If there are no additional costs, You must pay a change fee to Us for each change in accordance with clause 4.7 of these Conditions.
- (b) If there are additional costs and You reject these, Your Booking will not be changed.
- (c) If there are additional costs and You accept these, You must pay a change fee to Us for each change in accordance with clause 4.7 of these Conditions and the additional costs resulting from the change.

**3.12** You may cancel a Booking by sending Us written notice of cancellation at the Customer Service Contact Address. If You cancel a Booking You will be liable to pay a cancellation fee in accordance with clause 4.8 of these Conditions.

**3.13** A name change for a Guest or a change to the Journey Departure Date is considered a cancellation of the original Booking.

**4 Prices, inclusions and fees**

**4.1** All Journey Prices are quoted in Australian Dollars.

**4.2** If You pay Us by credit card, a surcharge may be added, please enquire for details. There is no surcharge for payments made by cash, cheque or direct transfer to Our nominated bank account.

**4.3** Your Journey Price includes all coach, rail and cruise travel set out in the Itinerary, the services of a Cruise Director (if applicable) and/or Tour Director, airport transfers outside Australia, meals as specified in Your Itinerary, economy class group flights and air taxes as set out in Your Itinerary, accommodation, sightseeing and admissions, where stated in Your Itinerary, port charges, all gratuities and tipping on land Journeys and any other specific inclusions identified in Your Itinerary.

**4.4** Unless expressly listed in Your Itinerary as an inclusion, Your Journey Price does not include airfares, airline taxes, shore excursions, additional optional activities, accommodation upgrades, meals not specified in Your Itinerary, drinks, laundry, spa and beauty treatments, medical services (only available on Scenic Eclipse), helicopter (Ocean), submersible (Ocean), travel between train stations, passport fees, visas, vaccinations, medical assistance, government taxes and charges (excluding GST) or any items or expenses of a personal nature.

**4.5** Discovery Experiences (Ocean) can only be booked whilst on-board including Zodiac, kayak, helicopter and submersible. Helicopter and submersible are at an additional cost.

**4.6** Unless stated as an inclusion in Your Itinerary, overnight accommodation required to meet Your Journey and/or any flight connections are not included in the Journey Price and will be at Your expense.

**4.7** We reserve the right not to honour any published prices that were erroneous due to printing, electronic, or clerical error. If You make a Booking based on erroneous pricing, We will offer You the option of cancelling the Booking and receiving a refund of any amount paid by You or confirming the Booking by paying the difference between the erroneous price and the correct price, as determined by Us.

**4.8** The following Fees are payable in addition to the Journey Price: If You change Your Booking, other than by varying the Journey Departure Date, You must pay a change fee of \$50.00 per Booking. This fee is on account of administrative expenses incurred by Us in changing Your Journey and is a genuine and reasonable estimate of Our expenses.

**4.9** Cancellation fees payable by You:

(a) If You cancel Your Journey for any reason prior to Your Journey Departure Date (including by changing Your Journey Departure Date or the name of a Guest), You will be liable for the following cancellation fee:

European and Asian River cruises, Japan, North America, Australia and New Zealand land tours:		Ocean cruises, Africa, Egypt & Jordan land tours:	
Days of notice prior to Journey commencement	Cancellation charge (per person)	Days of notice prior to Journey commencement	Cancellation charge (per person)
Over 90 days	Loss of Booking Deposit	120 days and over	Loss of Booking Deposit
89 to 61 days	50% of Journey Price	119 to 91 days	50% of Journey Price
60 to 0 days	100% of Journey Price	90 days and less	100% of Journey Price

You may also be liable to pay cancellation fees to airlines, hotels and other third parties.

(b) If using a Future Travel Credit and You cancel Your Journey for any reason prior to Your Journey Departure Date (including by changing Your Journey Departure Date or the name of a Guest), You will lose a portion of the Future Travel Credit equivalent to the cancellation fee that You would otherwise be liable for under clause 4.9(a). For the avoidance of doubt:

- (i) if You seek to cancel Your Journey prior to 91 (river) or 120 (ocean) days before the Journey Departure Date, You will be liable for a cancellation charge against your Future Travel Credit that is equivalent to the amount of the Booking Deposit that would have been payable by You at the time of making Your Booking if you were using a payment method other than a Future Travel Credit; and
- (ii) regardless of when you cancel, You will be notified of the relevant cancellation amount prior to the processing of your proposed cancellation. You may also be liable to pay cancellation fees to airlines and other third parties. Any portion of the Journey Price that has been paid by You to Us in the form of the Future Travel Credit in excess of the applicable cancellation charge will be refunded to You in

the form of a Future Travel Credit and must be used by You within 24 months of the date on which You originally obtained the relevant Future Travel Credit.

**4.10** We may vary Your Journey Price at any time before You have paid the Journey Price in full to the extent necessary to meet any increase in the Journey costs for reasons outside of Our control, including airfares, fuel, government taxes and charges, exchange rate fluctuations or other Journey related costs or tariffs. If We make such changes to Your Journey Price, We will notify You using Your Guest Contact details or via Your travel agent and give You a right to have Your Journey cancelled and receive a refund for the portion of the Journey Price that You paid directly to Us. We will not vary the Journey Price after We have received the total Journey Price from You, regardless of any increases in the costs incurred by Us.

**4.11** You are responsible for and must pay for all costs and expenses incurred by You as a result of any change made by You to Your Itinerary after the Departure Time. This includes changes due to illness or other personal reasons.

**4.12** Discover More shore excursion: Once on board, excursions cancelled at least 48 hours prior to the day of the excursion will be refunded in full. Any refunds will be either refunded to your credit card (for bookings made pre cruise) or to your on board account (for bookings made on board). You may cancel your excursion booking within 48 hours; however, no refund will be provided. Any exceptions to this rule will be clearly outlined in the excursion booking form. Excursion tickets must be returned to the Shore Excursions Desk at the time of cancellation.

**5 Cancellation and changes to Your Journey and Itinerary**

**5.1** Your acknowledgment:

(a) Subject to any rights you may have under the Australian Consumer Law and subject to clause 7.8, you acknowledge that:

- (i) there are general risks associated with travelling which are outside of Our control (in addition to Force Majeure Events) including Journey variations or interruptions caused by road, river, ocean or sea, weather conditions, public holidays, port or lock closures, unscheduled vessel or vehicle maintenance or emergency situations. We are not liable to You for any loss, cost or damage You may incur as a result of these general risks, except to the extent that such risks are a result of Our negligence, fraud or wilful misconduct; and
- (ii) We will not have any liability to You in relation to the cancellation of Your Journey by Us, or changes to Your Journey or Itinerary (including the costs of any affected travel arrangements and personal expenses, such as food) other than as set out in this clause.

(b) Your rights and remedies in this clause are subject to clause 8 (Force Majeure Event).

**5.2** Notice: If We cancel or make any changes to your Journey or Itinerary at any time for reasons in or outside of Our control, We will use reasonable endeavours to give You reasonable notice of the cancellation or change (as applicable). If the cancellation or change occurs prior to the Departure Time, We will notify You using Your Guest Contact details or via Your travel agent. If the cancellation or change occurs after the Departure Time, You will be notified personally by the Cruise Director or Tour Director. You acknowledge that there may be circumstances outside of Our control and knowledge in which case We may only provide You with little or no advance notice of the cancellation or change.

**5.3** Cancellation: We may cancel Your Journey for any reason (separate to Force Majeure Events), at any time (including prior to and after the Departure Time). For example, We may cancel Your Journey prior to the Departure Time if We do not receive a minimum number of Journey or Cruise passenger bookings to operate the Journey and ensure an enjoyable group atmosphere. If We cancel Your Journey prior to the Departure Time under this clause, You will be entitled to a refund of the Journey Price that You paid directly to Us (excluding agent / travel advisor fees). If We cancel Your Journey after the Departure Time under this clause, You will be entitled to a pro rata refund of the Journey Price that You paid directly to Us and that directly relates to the cancelled part of the Journey.

**5.4** Discover More shore excursion cancellation: We may cancel a shore excursion if the minimum participation number is not reached. In this event, we will offer an alternative excursion or a full refund. We reserve the right to cancel or amend a shore excursion for any reason including upon operational or commercial grounds and if we cancel an excursion for this reason we will issue a full refund.

**5.5** Minor changes to Your Journey or Itinerary: We may make certain non-material changes to Your Journey and/or Itinerary (separately to changes as a result of Force Majeure Events) at any time (including prior to and after the Departure Time) (Minor Changes). Minor Changes may include an inability to sail for part of a day, the use of coaches to transfer You to an alternative Cruise Vessel, changes in ports of embarkation or disembarkation, changes to Your cabin on the Cruise Vessel, changes to sightseeing activities, changes to Your Itinerary on board a Cruise Vessel and changes to the amount of time spent at a particular location. We have no liability to you for a Minor Change and You will not be entitled to a refund or any other remedy in the event of a Minor Change.

**5.6** Other changes to Your Journey or Itinerary prior to the Departure Time: We may make any changes to Your Journey and Itinerary prior to the Departure Time (separately to changes as a result of Force Majeure Events), including changes to the planned departure date. If We make such changes, We may offer you an alternative Journey or Itinerary and notify you of any applicable difference in the Journey Price. If You accept the alternative Journey or Itinerary (as applicable) within 7 days of being notified by Us and:

- (a) the original Journey Price exceeds the alternative Journey Price, then We will refund You the difference; or
- (b) the alternative Journey Price exceeds the original Journey Price, then You must pay us the difference.

If You do not accept the alternative Journey or Itinerary (as applicable) within 7 days of being notified by Us, We will cancel Your Journey and refund You the Journey Price that You paid directly to Us.

**5.7** Other changes to Your Journey or Itinerary after the Departure Time:

## Terms & Conditions

(a) We may also be required to make other changes to Your Journey after the Departure Time for reasons outside of Our control (and separately to changes as a result of Force Majeure Events). Such changes may include cancellation of sightseeing activities, continuous cruising without stopping, operating part of the Journey by coach and provision of off-ship accommodation in hotels or other accommodation.

(b) If We make a material change to Your Journey or Itinerary under this clause but provide You with a reasonably appropriate and equivalent alternative arrangement, then You may not be entitled to a refund and our liability to You will be limited to the arrangements offered under this clause, subject to clause 5.7(c).

(c) To the extent We make a material change to Your Journey under this clause and We do not offer You a reasonably appropriate and equivalent alternative arrangement, You may be entitled to a proportionate refund of the Journey Price that You paid directly to Us (as determined by Us, acting reasonably).

### 6. Your Journey obligations

**6.1** For the comfort and safety of You and Your fellow passengers and other people, You must follow the Tour Director's, Discovery Team Leader, Captain's and Cruise Director's instructions at all times.

**6.2** If We, the Captain or Cruise Director, the Tour Director or Our staff or any Service Provider consider that You are negatively affecting Your own health, safety or enjoyment, or that of other passengers, including by refusing to comply with instructions of the Tour Director, Captain or the Cruise Director, We may terminate the Contract and withdraw You from the Journey with immediate effect. If it is reasonably practicable to do so, the Tour Director, Captain or Cruise Director will provide a warning to You and allow You an opportunity to rectify Your behaviour before We withdraw You from the Journey.

**6.3** If You are withdrawn from the Journey under clause 6.2, You must make Your own travel and other arrangements at Your own expense and We are not liable to You for any loss, cost or damage You may suffer or incur as a result.

**6.4** You must have a valid passport with an expiry date of at least six (6) months after the last scheduled day of Your Journey.

**6.5** You must ensure that You obtain prior to the Journey Departure Date all required entry visas for all countries to be visited during the Journey, as failure to obtain correct documentation may affect Your participation in certain shore excursions and entry to certain countries during the Journey.

**6.6** If You do not have the correct visa or other documentation necessary to enter a country or participate in any aspect of a Journey (Documentation):

(a) We will not refund to You any portion of the Journey Price; and  
(b) You will be responsible for all costs You incur as a result of Your failure to obtain the required Documentation, including any costs associated with re-joining the Journey.

**6.7** If You are unhappy with something that does or does not happen on Your Journey, You must first use all reasonable endeavours to negotiate with Us in good faith to settle the dispute before commencing proceedings in any court or tribunal, including your participation in any class action purported or proposed class action or any other representative action.

**6.8** In the first instance, You should raise any concern with the Tour Director or the Cruise Director as soon as reasonably practicable, as it may be possible for them to take steps to resolve Your concern with minimal delay.

**6.9** You must make Your own enquiries regarding Your Journey, including being aware of any relevant government travel safety warnings.

### 7. Liability

**7.1** Nothing in these Conditions or the Contract operates to exclude, restrict or modify the application of any provision of the Competition and Consumer Act 2010 (Cth), including the Australian Consumer Law, or any equivalent State or Territory legislation, the exercise of a right conferred by such a provision, or any of Our liability for breach of a guarantee, condition or warranty implied by such a provision, where it is unlawful to do so. All exclusions and limitations of Our liability under the Contract must be read subject to this clause.

**7.2** To the maximum extent permitted by law and subject to clause 7.1, You acknowledge and agree that We accept no responsibility and will not be liable to You (or any third party) for any loss, cost or damage (including loss of enjoyment), except to the extent that such loss, cost or damage is a result of Our negligence, fraud or wilful misconduct, suffered directly or indirectly in connection with:

(a) any Journey risks or other aspects of the Journey disclosed to You in the Contract;  
(b) subject to any remedies You may have under clause 5, delays in departure or arrival times of aircraft, vessels or otherwise during Your Journey;  
(c) any loss or damage to Your luggage or belongings;  
(d) any personal injury or death resulting from the acts or omissions or negligence of any third parties providing goods or services to You during the Journey, including air carriers, hotels, shore excursion operators, restaurateurs, transportation providers and medical personnel; or  
(e) any disappointment or loss of enjoyment due to circumstances outlined in the Contract or otherwise outside of Our control.

**7.3** Subject to clause 7.1, but despite any other provision of the Contract, and to the extent permitted by law, Our maximum liability to You or any third party is limited to the Journey Price You have paid to Us, except to the extent that such liability is a result of Our negligence, fraud or wilful misconduct.

**7.4** To the maximum extent permitted by law and subject to clause 7.1, You acknowledge and agree We are not liable to You, under any circumstances, for any loss of enjoyment, opportunity, profit, savings, revenue or interest or any other consequential or indirect, incidental, special or punitive loss, damage or expenses, except to the extent that such loss, damage or expense is a result of Our negligence, fraud or wilful misconduct.

**7.5** You acknowledge and agree that We are not liable for any delay or failure by Us or any Service Provider to perform Our obligations under the Contract, resulting from or as a consequence of a Force Majeure Event.

**7.6** To the extent permitted by law and subject to any rights you may have under the Australian Consumer Law, all express or implied warranties, guarantees, representations, or terms are expressly excluded. Where the law implies any guarantee, condition or warranty which cannot be excluded, to the maximum extent possible, Our liability to You for breach of such an implied guarantee, condition or warranty is limited, to one or more of the following at Our option:

(a) in the case of goods: the repair of goods, replacement of goods, the supply of equivalent goods or the cost of repair, replacement or supply of equivalent goods; or

(b) in the case of services: supplying the services again or payment of the cost of supplying the services again.

**7.7** Subject to clause 7.1, You acknowledge and agree that where Your Journey, any part of Your Journey, accommodation, flights or any other good or service are not directly provided by Us, but are provided by a Service Provider, in the event of any dispute or claim including for loss, damage, breach of contract or negligence arising from the conduct of the Service Provider, You must pursue Your claim directly against the relevant Service Provider.

**7.8** Notwithstanding any other provision in these terms, Our services come with guarantees that cannot be excluded under the Australian Consumer Law. For major failures with the service, You are entitled:

(a) to cancel Your service contract with Us; and  
(b) to a refund for the unused portion, or to compensation for its reduced value. You are also entitled to be compensated for any other reasonably foreseeable loss or damage. If the failure does not amount to a major failure, You are entitled to have problems with the service rectified in a reasonable time and, if this is not done, to cancel Your contract and obtain a refund for the unused portion of the contract.

### 8. Force Majeure Event

**8.1** Force Majeure Events are events outside of Our control. As set out in clause 1.8(b), we strongly recommend that you obtain travel insurance that adequately protects you against these risks.

**8.2** If the performance of Our or a Service Provider's obligations is hindered, prevented, delayed or affected by the occurrence of a Force Majeure Event, those obligations are suspended for the duration of the Force Majeure Event.

**8.3** We will use reasonable endeavours to give You notice as soon as reasonably practicable of the occurrence of a Force Majeure Event that prevents, materially affects or delays, or is likely to prevent, materially affect or delay, the performance by Us or a Service Provider of Our obligations under the Contract.

**8.4** We may cancel, redirect, delay or amend a Journey as a result of the occurrence of a Force Majeure Event which prevents, materially affects or delays, or which We reasonably determine is likely to prevent, materially affect or delay, Our or a Service Provider's ability to provide the Journey:

(a) in accordance with the Contract; or  
(b) to a standard which We consider will meet the reasonable expectations of the Journey participants.

**8.5** If We cancel Your Journey or make any changes to Your Journey or Itinerary (including changes to the planned departure date, change to the mode of transport or provision of onshore instead of onboard accommodation) as a result of a Force Majeure Event:

(a) We will not have any liability to You; and  
(b) You may not be able to exercise the rights and claim the remedies that would otherwise be available to You under this Contract, including any right You may otherwise have to a full or partial refund of Your Journey Price.

**8.6** You acknowledge that this clause 8 is reasonably necessary to protect Our legitimate business interests and that We are unlikely to be able to recover our costs and expenses on the occurrence of a Force Majeure Event.

### 9. Future Travel Credits

**9.1** Without limiting anything in clause 5 (Cancellations and changes to your Journey and Itinerary) or clause 8 (Force Majeure Events), We may elect to, but are in no way obliged to, provide you with a Future Travel Credit, upon the occurrence of a Force Majeure Event.

**9.2** If You are provided with a Future Travel Credit, the following rules apply to the use of Your Future Travel Credit:

(a) You may apply it towards any future booking for a Journey with a Journey Departure Date within 24 months after the date on which We cancel Your Booking, subject to availability and any Future Travel Credit capacity limits applicable to Your selected Journey or cruise;

(b) If We provide You with a refund by way of a Future Travel Credit, then You must apply all amounts to any future booking for a Journey with a Journey Departure Date within 24 months of the date on which We provided you the refund by way of the Future Travel Credit;

(c) If Your original booking was for an ocean or river cruise, the Future Travel Credit can only be applied to available ocean and river cruises within the following brands within Our corporate group: Scenic Luxury Cruises & Tours, Emerald Cruises & Tours;

(d) If Your original booking was for a land Journey, the Future Travel Credit can be applied to available land Journeys or ocean and river cruises within the following brands within Our corporate group: Scenic Luxury Cruises & Tours, Emerald Cruises & Tours;

(e) You may, with Our prior written consent, which We will not unreasonably refuse, transfer it to another person to apply towards any future Booking for a Journey with a Journey Departure Date within 24 months after the date on which

We cancel Your Booking;

- (f) its use for any future booking is subject to availability;
- (g) It cannot be applied against stand-alone products or upgrades from third parties or Service Providers in conjunction with the standard Journey Itinerary;
- (h) It is not redeemable in whole or in part for cash and will expire to the extent it is not used; and
- (i) You (or the person to whom it is transferred) must pay any shortfall between the value of the Future Travel Credit and the Journey Price for the new Booking in accordance with clause 3 of these Conditions.

#### 10. Privacy and Data Protection

**10.1** In order for Us to process Your Booking and provide the Journey to You, You will need to provide to Us, and We will need to use Personal Information. We will need to provide Your Personal Information to Service Providers, as well as customs and immigration authorities. We may also provide Your Personal Information to security and credit checking organisations. Some of the persons to whom We provide Your Personal Information are located overseas, including in countries that may not provide the same level of protection of Personal Information as Australia. By making a Booking You give Us Your consent to use and disclose Your Personal Information in the manner described in this clause 10.1.

**10.2** We will otherwise deal with Your Personal Information in accordance with Our privacy policy, which can be found on Our Website or provided on request. For the avoidance of doubt, the Privacy Policy does not form part of this Contract.

#### 11. General Provisions

**11.1** We may only waive a right or remedy created under these Conditions in writing. Our delay in exercising a right or remedy does not constitute a waiver of that right or remedy, nor does any waiver by Us (either wholly or in part) operate as a subsequent waiver of the same or any other right or remedy.

**11.2** The Contract is governed by the laws in force in New South Wales, Australia.

**11.3** The parties submit to the non-exclusive jurisdiction of the courts of New South Wales, Australia and any courts competent to hear appeals from those courts.

**11.4** Any term which is, by its nature, intended to survive termination of the Contract survives termination.

**11.5** In these Conditions, unless the context otherwise indicates a contrary intention:

- (a) headings are for convenience only and do not affect interpretation;
- (b) singular includes the plural and vice versa;
- (c) a reference to a party includes its successors, permitted assigns, administrators and substitutes;
- (d) where a word or phrase is defined, its other grammatical forms have the corresponding meaning;
- (e) the word 'include' in any form is not a word of limitation;
- (f) no rules of construction apply to Our disadvantage on the basis that these Conditions or the Contract were prepared by Us;
- (g) a reference to a natural person includes their personal representatives; and
- (h) a reference to a body (including institute, association or authority) which ceases to exist or whose powers or functions are transferred to another body is a reference to the body which replaces it or which substantially succeeds to its powers or functions.

**11.6** If a provision of the Contract, or a right or remedy of a party under this Contract is invalid or unenforceable in a particular jurisdiction, it is read down or severed in that jurisdiction only to the extent of the invalidity or unenforceability and it does not affect the validity or enforceability of that provision in another jurisdiction or the remaining provisions in any jurisdiction.

**11.7** The Journey Brochure is valid for the Journey Departure Dates within the Validity Period, unless otherwise indicated in Your Itinerary, and supersedes all previous brochures.

#### 12 Important notices about Your Journey

##### 12.1 Journey Participation

(a) Expedition/ remote location: Given the potentially extreme conditions and remote locations we may visit, You must complete a mandatory full medical questionnaire, we will provide prior to departure, to enable us to assess the risks involved. This questionnaire must be verified and signed by Your medical practitioner between 90 and 60 days prior to the Journey departure date and must be provided to Us not later than 60 days prior to the Journey departure date. Any medical questionnaire that is signed by your medical practitioner earlier than 90 days before the Journey departure date will not be accepted and a revised one will be required. If You do not complete and return Your verified and signed medical questionnaire, You will not be cleared for embarkation and Your Booking will be deemed to have been cancelled by You in which case You will be liable to pay a cancellation fee in accordance with clause 4.8 of these Conditions.

(b) Special needs: We welcome You if have any medical condition, pregnancy, disability or other special need, provided You are accompanied by a companion capable of providing all the assistance You require. Please note that although We will use reasonable endeavours to provide You with all the activities on Your Itinerary, depending on Your disability, You may not be able to participate in every activity and the Tour Director or Cruise Director will have the right to refuse Your participation if the Tour Director or Cruise Director believes Your health and safety or the health and safety of any other person may be impacted by Your participation. You must advise Us (or Your travel agent) of any disability, medical condition or dietary requirement at the time of Booking and notify Us of any changes or deterioration in the disability or medical condition or development of any disability, pregnancy, or medical condition after booking.

(c) Special needs (Ocean cruises only):

(i) It is very important that You tell us of the condition and of any medical or mobility equipment that You will need to bring with You in writing before you

confirm your booking so that we can assist You in considering the suitability of the arrangements and/or making the booking.

(ii) In the event that You require assistance with embarking or disembarking as a result of Your reduced mobility or disability, please advise Us at the time of booking and in any event no later than 48 hours before the assistance is required. Please also note that assistance is not always available when embarking or disembarking at all ports of call. It is important to note in relation to the Scenic Eclipse that:

- For safety reasons, passengers in wheelchairs cannot be carried on tenders or Discovery experiences including but not limited to Zodiacs, kayaks and submersible; and
- Collapsible walkers may be taken onto tender vessels for transfer to shore for the included touring. Walkers are however unable to be taken on the Zodiacs at any time due to space restrictions. All walkers must be stored in Your suite as there is no additional storage space on board.
- Embarking and disembarking the tenders, Zodiacs, kayaks and submersible are via a mud room/change room with steps leading to a marina platform and requires the ability to step into and out of these vessels unaided.

(d) Facilities: It is important to note that:

- (i) elevators may not access all decks and cabins;
- (ii) wheelchair passengers should be aware that cabin doors, rest rooms and corridors may not be wide enough to provide access for standard wheelchairs and may have significant thresholds and cabin doors which limit access;
- (iii) You must be able to walk up/down stairs in the event of an emergency to reach emergency evacuation points; and
- (iv) motorised scooters cannot be used on board.

(e) Other reasons for which Your Booking may be declined: We may decline Your Booking if We are of the view that:

- (i) We cannot adequately provide for any of Your special needs;
- (ii) Your health, safety or enjoyment, or that of any other passengers attending the Journey may be at risk; or
- (iii) You cannot or will not abide by any reasonable directions of the Tour Director or Cruise Director.

##### 12.2 Cruises

If Your Journey includes a Cruise, the following provisions apply:

- (a) Deckplan: The deck plan, cabin sizes, images, inclusions and layout in the Journey Brochure are indicative only and may vary. Pictured representations of cabins or rooms in Journey Brochures are not drawn to scale. Suite dimensions within each category may vary in size depending on their location on each deck. Suite measurements are based on gross calculations and include internal technical spaces.
- (b) Cruise Cabins: Your Journey Price is based on the Cabin category indicated in the Journey Brochure. Upgrades are subject to availability and will be at an additional cost.
- (c) Port Arrival and departure times: arrival and departure times are an indication only and are always subject to change without notice.
- (d) Shore Excursions: Shore excursions provided by Service Providers are at Your own expense and can be purchased prior to Your Journey Departure Date. We recommend booking shore excursions at least 120 days prior to Your Journey Departure Date.
- (e) Dinner Reservations: Dinner times are scheduled on board. Preferred meal times may be requested at the time of booking and are subject to availability.
- (f) Photography: Our Journeys offer some of the most spectacular and beautiful photographic scenery in the world. However, We cannot guarantee that every scene or highlighted featured in a Journey Brochure or Itinerary will be available on each Journey. No refund or other compensation will be available for any missed scene or photographic 'opportunity'.
- (g) Smoking: Smoking is limited to designated smoking areas during Your Cruise and may be limited to designated smoking areas during other parts of Your Journey.
  - (i) You acknowledge that We may restrict smoking to specific times and locations during Your Cruise for the comfort of all passengers.
  - (ii) Smoking is not permitted on coaches or such other places as nominated by Us from time to time.
  - (iii) Although We will use reasonable endeavours to ensure there are opportunities for You to smoke during the Journey, We cannot guarantee such opportunities will be available.
- (h) Noise, vibration and odour: While the Operators take reasonable steps to minimise noise, vibration and odours on the cruise vessels, You acknowledge and accept that some noise, vibration and intermittent odours may be experienced on the Cruise Vessel, and that We accept no responsibility, and will not be liable to You in relation to any such noise, vibration or odour.
- (i) Docking Position: During port stops, vessels may dock side by side, obstructing views and requiring You to pass through other vessels to embark and disembark. You agree and acknowledge that You will have no claim in respect of any such matters.
- (j) Medical Services:
  - (i) River cruise vessels do not carry a doctor on board, however medical services may be called at Your own expense.
  - (ii) Ocean cruises only: A medical centre is available on board of Scenic Eclipse and will be staffed according to the destination. You acknowledge that Antarctica, the Americas, Transatlantic crossings, Arctic & Fjords regions are remote areas with limited medical facilities available. Due to the large number of passengers on board, We cannot provide a personal escort for medical visits.
  - (iii) We are not liable in connection with the provision of any medical care You may require or choose to accept during Your Journey.
- (k) Currency and credit cards:

## Terms & Conditions

- (i) All purchases on board will be charged to Your shipboard account. The on-board currency on river cruises is the Euro. The on-board currency on ocean cruises is the US Dollar.
- (ii) Shipboard accounts may be paid by Euro (river) or US Dollar (Ocean) or credit card.
- (l) Internet Service: Internet facilities are available on board the Cruise Vessel at no additional charge.
- (i) Complimentary Internet service may not apply to third-party suppliers that are not related to Us.
- (ii) Internet availability and quality may vary from country to country and can also be affected by technical issues, weather or unfavourable terrain and other factors outside of Our control.
- (iii) We do not guarantee the availability or quality of Internet connections or services.
- (m) All-inclusive beverages (Scenic Ocean, Scenic River and Emerald Ocean Brands only): If Your Journey includes an all-inclusive beverage package, the following provisions apply:
  - (i) All standard beverages are included in the Journey Price whilst You are on board the Cruise Vessel. This includes beer, wine, soft drinks and standard spirits. It also includes daily replenishment of the suite minibars.
  - (ii) Selected items such as high-end spirits, including malt whiskey, French champagne and selected wines are not included in the package and may be available at an additional charge.
  - (iii) We reserve the right to refuse service of alcohol for the purposes of adhering to responsible service of alcohol.
  - (iv) The all-inclusive beverages package may not apply to third-party suppliers that are not related to Us.
  - (n) All-inclusive beverages (Emerald River Brand only): If Your Journey includes an all-inclusive beverage package, the following provisions apply:
    - (i) Beer, wine and soft drinks are available with meals while cruising on board the Cruise Vessel.
    - (ii) Any additional drinks may be purchased on board. Beverage packages will also be available for purchase on board.
    - (iii) We reserve the right to refuse service of alcohol for the purposes of adhering to responsible service of alcohol.
    - (iv) The all-inclusive beverages package may not apply to third-party suppliers that are not part of Our corporate group.

### 12.3 Drones

- (a) General prohibition: Unless provided by Us or an Operator as part of an organised activity during Your Journey, the use of Drones is strictly prohibited at all times on Your Journey.
- (b) Legal restrictions: You should also be aware that, in addition to the prohibition in paragraph 12.3(a), the use of Drones is regulated or prohibited by law in many locations and unlawful use may result in arrest or prosecution by the relevant authorities.
- (c) Organised Activities: If We or an Operator allow You to operate a Drone as part of an organised activity during Your Journey, You must strictly comply with all instructions of the activity leader.

### 12.4 Coaches

- (a) Seat rotation: To ensure all passengers have the opportunity to enjoy front and window seats, a daily seat rotation system is employed on all of Our coaches and You must follow the seat rotation system.
- (b) Travel sickness: If You suffer from travel sickness, We strongly recommend that You arrange medication or other alternatives to treat Your symptoms, as We cannot make allowances for this.

### 12.5 Videography and Photography

- (a) We may capture photographs and video footage throughout Your Journey, including to capture highlights and activities of Your Journey (Journey Video). Although we will use reasonable endeavours to ensure that the photographs and video footage captured are general in nature and do not focus on any specific individual, You acknowledge that we may capture photographs and video footage of You throughout the Journey.
- (b) The Journey Video may be prepared and made available online to You and all other passengers following the Journey. We may also use the Journey Video (and any still images from it) for marketing, training and promotional purposes and you waive any right to claim any payment or other compensation for such use.
- (c) A Journey Video is provided to You for personal use only and you must not use it for any commercial or unlawful purpose.
- (d) We may decline to produce, or make available to You, a Journey Video in our absolute discretion.
- (e) You acknowledge and agree that We have no ability to restrict or control the further publication or distribution of the Journey Video by other passengers.
- (f) If You do not wish to appear in the Journey Video, you must inform Us at the commencement of the Journey by completing and returning to reception on the Cruise Vessel Our 'opt-out' form, in which case we will use reasonable endeavours to ensure you do not appear, or are not able to be identified, in the Journey Video.

## 13. Additional Important Information

### 13.1 Air Travel and luggage

- (a) Airfare Conditions
  - (i) All airfares are subject to availability and conditions apply.
  - (ii) Our reservations consultant will book an appropriate fare for Your Journey.
  - (iii) Some discounted airfares have conditions which make them unsuitable to be used in conjunction with Our Journeys. Full details and conditions may be obtained from Our reservations consultant or Your travel agent. If You have any

questions or concerns, please contact Us or Your travel agent.

- (iv) Airfares booked as part of Your Journey may not be a direct flight and some included flights are unescorted. If You request a customised route or direct flight, You will be responsible for all additional costs.
- (v) Depending on departure date and time of booking, the required booking class for airfare offer may be too far in advance to book with the appropriate airline. If the required booking class is unavailable, air surcharges may apply. The flight quote including air taxes and surcharges will be confirmed once all air sectors are booked and confirmed.
- (vi) Taxes (including all airline and government taxes and surcharges) are subject to change and will be advised at the time of flight reservation.
- (vii) All flights are subject to schedule changes and class downgrades, as determined by the operating airline. You acknowledge and agree that We accept no responsibility and will not be liable to You for any costs associated with these changes.

(viii) All airfares are subject to availability and scheduled for travel to meet the Journey Departure Dates set out in the Journey Brochure. Any requests outside of the Journey dates may incur seasonal surcharges, as enforced by the airline.

### (b) Airport Transfers

- (i) Airport transfers are only available on the first and last day of Your Journey and at times We designate. Transfers outside these times will be at Your expense and must be secured by Your own arrangements.
- (ii) Passengers who have purchased Our pre and / or post Journey hotel accommodation and airfares will be provided with airport transfers to and / or from their hotel in the Journey start or end city only (applicable), on the day of the pre or post accommodation booking (as applicable).
- (iii) If You do not book Your flights with Us, You must ensure Your flight details are provided to Us at least 60 days before the Journey Departure Date by:
  - (A) entering Your flight details at the trip personaliser on the Website; or
  - (B) contacting Us at the Customer Service Contact Address.
- (iv) No refund will be given for unused transfers. Transfers cannot be routed to other pick-up points or destinations.

(v) If You miss the pre-booked transfer, You will be responsible for making Your own way to the Journey departure point, at Your own expense.

(vi) Unless expressly stated in Your Itinerary, airport transfers may be group transfers scheduled to coincide with multiple flight arrival and departure times. Private transfers, including Royal Suites transfers (available for Scenic Brand only) are not available in all locations. Please enquire for further details.

(c) Carriers: The carriers (including airlines, rail and sea carriers used in association with the Journeys) are not responsible for statements or features in Journey Brochures. The conditions of sale of each carrier constitute a separate contract between You and the carrier and We have no responsibility in relation to contracts between You and the carriers.

### (d) Luggage

- (i) Journey participants are entitled to one suitcase per person. Your suitcase must not exceed 76 x 53 x 28cms (30" x 21" x 11") and must not weigh more than 23kg (50lbs). All luggage must be stored in Your suite while on the Cruise Vessel, there are no additional luggage storage facilities available.
- (ii) when You are travelling in Kenya and Tanzania there are luggage restrictions due to limited luggage space on flights and four wheel drive safari vehicles. We recommend You use a soft bag (sports bag or alternative) to pack essential items into during this portion of the Tour. Suitcases are unable to be taken with You whilst Tour throughout Kenya and will be delivered back to You at Nairobi Airport. Our Service Provider will take reasonable steps to ensure the safety and security of the remainder of Your luggage during this portion of the Tour.
- (iii) Japan: Due to limited luggage space on trains, your main luggage will be transferred on a separate luggage vehicle and may not arrive at your hotel until after your arrival. We therefore recommend that you have a small bag you are able to keep essential items with you that you are able to carry by yourself onto the trains.
- (iv) Airline passengers should consult with their airline as size and weight restrictions on luggage may vary from airline to airline and according to the class booked.

(v) It is Your responsibility to ensure Your luggage complies with these requirements and You acknowledge that We, contracted airlines or Service Providers may elect not to carry overweight items.

(vi) You will be responsible for any excess luggage charges.

### 13.2 Sightseeing, Excursions and Special Activities on Journey

(a) Sightseeing: Sightseeing in many historic villages, towns and cities can only be undertaken by walking as motorcoach access is not possible. Sightseeing may involve stairs and extensive walking over uneven surfaces. Consequently, a reasonable level of fitness is required.

(b) Mountain Excursions: Some Journeys include mountain excursions involving high altitudes. Please consult with Your doctor to ensure that You have an adequate level of fitness and are in good health before participating in these excursions.

(c) Scenic Freechoice (Scenic Brand only): All Scenic Freechoice activities and Scenic Freechoice Dining can be booked during Your Journey with Your Cruise Director or Tour Director (unless otherwise stated) but are subject to availability, seasonal and operational factors. Some activities require a minimum or maximum number of participants to operate.

(d) Scenic Enrich (Scenic Brand only): It may not always be possible to offer every Scenic Enrich activity in the Journey Brochure on Your Journey. Wherever possible, suitable alternatives will be provided without liability to You.

(e) DiscoverMORE Optional Tours (Emerald Brand only): Additional activities



undertaken by You such as sightseeing tours purchased by You in addition to those activities outlined in the Journey Brochure during Your Journey are not included in Your Journey Price and incur an additional cost. Additional activities are subject to availability, seasonal and operational factors and must be pre-booked prior to Your Journey Departure Date. Some activities require a minimum and maximum number of participants to operate.

### 13.3 Passenger Requirements

(a) Special Diets: You must advise Us in writing of any and all special requests and dietary requirements at the time of Booking. We will make every reasonable effort to accommodate Your dietary requests but cannot guarantee that such requests will be met.

(b) Vaccinations: It is Your responsibility to ensure You have all required vaccinations for Your Journey and We recommend You refer to .smarthtraveller.gov.au for full details and also consult Your doctor. Travellers to certain areas in Africa may be refused entry if they do not hold a Yellow Fever International Vaccination Certificate, You will not receive a refund if You are unable to be vaccinated and if as a result decide not to complete the Tour.

(c) Medical Conditions: We strongly recommend a visit to Your doctor prior to Your Journey.

(d) Solo Passengers and Single Accommodation

(i) Prices quoted in Journey Brochures are on a twin share per person basis. If Your Booking is not a twin share booking, We will notify You of the applicable single supplement rate for Your Journey (Single Supplement Rate), and You must pay such Single Supplement Rate in addition to the price quoted on a twin share per person basis at the time of Booking.

(ii) If You are willing to share a room with another single traveller of the same gender, You must pay the Single Supplement Rate and We will use reasonable endeavours to match You with another single traveller of the same gender, but We cannot guarantee availability. If We are able to match You with another traveller and You remain matched throughout the entire Journey, You will be refunded Your Single Supplement Rate within two (2) weeks of Your Journey completion. We accept no responsibility for the suitability of the allocated rooming partner.

(iii) If at any time during the Journey, You consider Your rooming partner unsuitable, You may notify Us and We will use reasonable endeavours to arrange single accommodation for You for the remainder of the Journey, subject to availability, and at Your own cost.

(iv) A limited number of single rooms and/or cabins are available at a Single Supplement Rate for each Journey. In some locations, single rooms are smaller than twin rooms and may not be available. You acknowledge that if there is no availability of single accommodation for the remainder of the Journey, You will be required to continue to share with Your nominated rooming partner for the remainder of the Journey.

(e) Young Passengers:

(i) Passengers under the age of 18 years (as at the Journey Departure Date) must be accompanied by an adult and share their accommodation with an adult.

(ii) Children under the age of 12 years are not encouraged (with the exception of Christmas Journeys and Cruises) and are accepted or rejected at Our discretion.

### 13.4 Maps, Pictures and Images

(a) Maps: Maps or Journey depictions contained in Journey Brochures or any other brochures We issue are intended as an indication only and should not be relied upon as the actual route to be taken during the Journey.

(b) Images: All images in Journey Brochures represent typical scenes and descriptive detail for each Journey, however it is possible that the particular subject matter may not be seen or experienced on Your Journey. Also, some pictures may have been digitally enhanced.

### 13.5 Hotel Accommodation

(a) Substitution: We may substitute hotel accommodation of a similar standard in place of the advertised hotel due to hotel availability issues. Any changes will be notified once confirmed with the hotel.

(b) Responsibility: Although We have taken reasonable steps to secure the most suitable hotel accommodation in the area of the Journey, We are not liable to You for the quality, size or fitness of hotel rooms.

## 14 Destination Specific Terms

### 14.1 European River Cruises

(a) Scenic Culinaire (Scenic brand only): Scenic Culinaire is offered on board Scenic Diamond and Scenic Sapphire cruise vessels only whilst sailing in France. Scenic Culinaire cooking school has limited capacity and may not be able to accommodate every guest on every cruise. Cooking classes held in Scenic Culinaire will be hosted by the onboard culinary team.

(b) Table La Rive & Table d'Or dining (Scenic brand only): Table La Rive is available on board of all Scenic cruise vessels cruising Rhine, Main and Danube rivers and France and Portugal. Table La Rive and Table d'Or is exclusive to guests on Diamond Deck only for cruises of 10 nights or more. Table La Rive and Table d'Or is exclusive to guests in Royal and Junior Suites for cruises of 9 nights or less.

(c) Royal Suite on board credit (Scenic brand only): Guests travelling in Royal Suites will receive 200 Euros per suite to their shipboard account which can be used in the Wellness Centre. This is not applicable to other services whilst on board and is not redeemable for cash.

(d) Palais Liechtenstein (Scenic brand only): If for any reason Palais Liechtenstein is not available, another suitable venue will be substituted without any liability to You.

(e) Salt Therapy Lounge: Salt Therapy Lounge is offered on the Scenic Diamond and Scenic Sapphire as well as the Scenic Brand vessels that cruise along the Rhine, Main and Danube Rivers.

(f) Danube Delta: Small boat exploration of the Danube Delta is subject to weather conditions, and disruptions may occur.

(g) The waterways of the Bordeaux region are a part of a tidal river system which results in changing water levels in the region and based on tides the itinerary will be amended or modified as required.

**14.2 Antarctica, the Americas, Transatlantic crossings, Arctic & Fjords and other remote Regions:**

(a) Highlights and wildlife encounters as outlined in the Itinerary are possible experiences only and cannot be guaranteed. Your Captain, Discovery Team Leader or Cruise Director will determine opportunities for exploration taking into account the prevailing weather, wildlife activity and ice conditions.

(b) Laundry and internet facilities may be limited whilst cruising in these regions.

(c) Complimentary Polar Parka and special Polar boot use is included for all Cruises to Antarctica, South Georgia and the Arctic & Fjords.

(d) As a condition of travelling to Antarctica or Arctic & Fjords on a Journey, You must provide to Us, at least 10 days before the Journey departure date:

(i) evidence that You hold comprehensive insurance, including medical evacuation coverage; or

(ii) evidence that You have access to available funds of not less than \$150,000 USD; or

(iii) a bond or other security, satisfactory to Us, in Our absolute discretion, to cover the cost of medical evacuation in the event of a medical emergency.

(e) Without limiting anything in clause 8, if a charter flight from any starting point to the point of embarkation for the ship voyage is delayed due to adverse weather conditions, We will attempt, for a period of up to 72 hours from the proposed departure time of the charter flight, to arrange a later charter flight. We will attempt to do so at no extra charge to You, but if an additional charge does apply, You will be liable to pay that additional charge.

(f) Discovery Experiences: a reasonable level of mobility is required to participate in most discovery experiences. Specific discovery experiences will be advised on full release. Discovery experiences including Zodiac, kayak, helicopter, e-bikes and submersible are subject to regulatory approval, availability, weight restrictions, medical approval and prevailing weather, marine and ice conditions and may be cancelled at short notice. We cannot guarantee their availability, even if You have made an on-board booking. Discovery experiences can be booked whilst on Cruise with Your Cruise Director or Discovery Team Leader (unless otherwise stated) and are subject to availability, seasonal and operational factors. Some activities require a minimum and maximum number of participants to operate.

### 14.3 Asia and Africa, Egypt and Jordan

(a) Due to dusty and/or unsealed road conditions in Kenya and Kruger National Park on the private concessions, You need to be in good physical condition. Travel in Kenya is by 4WD safari vehicle and it is highly recommended if You suffer a back injury to consult Your doctor prior to participation. If You have contact lenses, You should bring glasses in case dust causes irritation.

(b) Africa, Egypt and Jordan and Asian Journeys include walking on steps, uneven ground and surfaces whilst visiting monuments and antiquities for lengths of between 1-5 kilometres and full mobility may be required. If you choose to participate You should be in an appropriate physical condition to complete any sightseeing expeditions forming part of the Tour.

(c) Hotel accommodation Asia: Double beds in Asia are not the normal bed configuration and may not always be available.

(d) Japan: Airport Transfers are scheduled shuttle bus transfers to coincide with multiple flight arrival and departure times.

### 14.4 Australian land tours

(a) Due to the distance between some attractions in Western Australia, there may be days with extended coach travel.

(b) In some regional areas portage may not be available and You will be required to carry Your luggage upon arrival and departure

## 15 Contact Details

To make, change or cancel a Booking or to make any enquiries regarding a Booking or to otherwise give Us any notice in accordance with the Contract, You should contact Our customer service centre as follows:

For the Scenic Brand:

Email: [info@scenic.com.au](mailto:info@scenic.com.au)

Telephone: 1300 170 588

Postal: PO Box 807, Newcastle, NSW 2300 Australia

For the Emerald Brand:

Email: [info@emeraldcruiises.com.au](mailto:info@emeraldcruiises.com.au)

Telephone: 1300 286 110

Postal: PO Box 807, Newcastle, NSW 2300 Australia

**15.1** Our customer service centre is open from 7.30am to 6.00pm Monday to Friday and 9.00am to 1.00pm Saturday (excluding public holidays in New South Wales) (Australian Eastern Standard Time). Although We hope You won't need it, Our after-hours emergency number when calling in Australia is freecall 1800 620 105. Other emergency contact details are included in Your travel documents.

**15.2** If You need to contact Us during Your Journey, We recommend that if it is practicable to do so, in the first instance, You should try to contact the Tour Director or Cruise Director. Depending on the purpose of Your contact, they may be able to assist You, but otherwise they may direct You to contact Our customer service centre.

**15.3** We will use the Guest Contact Details if We need to contact You before the Journey Departure Date. It is therefore very important that You keep the Guest Contact Details up to date and notify Us immediately of any changes. To update Your Guest Contact Details, please contact Us at the Customer Service Contact Address.

# SCENIC°CLUB

## Membership & Benefits



*The Scenic Club loyalty program rewards you for pursuing your passion for travel. Gain access to exclusive offers and savings, like private transfers, priority access on pre-released handcrafted land journeys and ultra-luxury cruises, complimentary pre- or post-cruise hotel stays, and more.*

### SCENIC°CLUB — GOLD —

Upon returning from your first cruise or land journey, you'll automatically become a Scenic Club Gold member. **Gold benefits include:** Welcome home voucher to be redeemed on your next ultra-luxury cruise or land journey\*, priority booking on pre-release land journey or cruises, Scenic Club members-only events and early access to Scenic Wonder eMagazine.

### SCENIC°CLUB — PLATINUM —

Members who collect 5,000 status points will be upgraded to Scenic Club Platinum. In addition to the benefits of Gold, your **Platinum benefits include:** Private transfers and a complimentary pre- or post-hotel stay^.

### SCENIC°CLUB — DIAMOND —

Members who collect 10,000 status points will be upgraded to Scenic Club Diamond. In addition to the benefits of Platinum, your **Diamond benefits include:** Invitation to premium events, on board booking priority and private transfers.

### SCENIC°CLUB — EMERALD —

Members who collect 25,000 status points will be upgraded to Scenic Club Emerald. In addition to all the benefits of Diamond, your **Emerald benefits include:** Upgraded hotel^^, invitations to premium events and a welcome home hamper after every Scenic journey.



Discover more at  
[scenic.com.au/loyalty](https://scenic.com.au/loyalty)

# Learn from Experts

## Scenic Information Sessions

Our Travel Lounge events provide a more personalised and intimate place to dream and plan your next ultra-luxury cruise or land journey.

These sessions are designed to be in accessible local venues, creating a very relaxed and informative way for you to learn from our experts.



### Gain insights from your local Scenic expert travel representative

Having travelled on various land journeys, river and ocean cruises, our experts will be on hand to share their valuable insights.

### Learn more about new destinations, experiences and itineraries

Discover more about how you can enjoy the newest itineraries and exciting experiences in 2025 and 2026.

### Small-ship cruising benefits

Discover more about the benefits of small-ship cruising. Our experts will also share travel tips on how to choose the right destination and itinerary to suit your personal interests.

### Access special bonus offers

Attendees will receive special bonus offers which can be combined with our current Earlybird and Limited Time Offers.



For further questions about our Scenic Travel Lounges, or to reserve your space, please visit [scenic.com.au/events/travellounge](https://scenic.com.au/events/travellounge)



---

## *Scenic Destinations*

---

### **Scenic Eclipse Ocean Voyages**

---

Antarctica  
The Arctic & Fjords  
Europe & The Mediterranean  
North America  
South & Central America  
Australia, New Zealand & The Pacific  
South East Asia  
Japan & South Korea

### **Scenic River Cruises**

---

Europe  
South East Asia  
Egypt

### **Scenic Land Journeys**

---

Canada, Alaska & USA  
United Kingdom & Europe  
Japan & South Korea  
Africa, Egypt & Jordan  
Australia  
New Zealand

Contact your local Travel Advisor or call

# 138 128

---

#### **Australia**

25 Watt Street, Newcastle, NSW 2300

#### **Worldwide Offices**

New Zealand Canada USA United Kingdom EMEA

---